

## Product datasheet

# Anti-Integrin alpha V antibody [272-17E6] - BSA and Azide free ab16821

★★★★★ [4 Abreviews](#) [27 References](#) [2 Images](#)

### Overview

---

<b>Product name</b>	Anti-Integrin alpha V antibody [272-17E6] - BSA and Azide free
<b>Description</b>	Mouse monoclonal [272-17E6] to Integrin alpha V - BSA and Azide free
<b>Host species</b>	Mouse
<b>Specificity</b>	Cross reacts with all alpha V integrins.
<b>Tested applications</b>	<b>Suitable for:</b> Flow Cyt (Intra)
<b>Species reactivity</b>	<b>Reacts with:</b> Human <b>Does not react with:</b> Mouse
<b>Immunogen</b>	Full length native protein (purified) corresponding to Human Integrin alpha V. Human Placental ? vβ3 Database link: <a href="#">P06756</a>
<b>Positive control</b>	Flow Cyt (intra): Human melanoma cells and HeLa cells
<b>General notes</b>	<p>This product was changed from ascites to tissue culture supernatant on 17 May 2019. Please note that the dilutions may need to be adjusted accordingly. If you have any questions, please do not hesitate to contact our scientific support team.</p> <p>The Life Science industry has been in the grips of a reproducibility crisis for a number of years. Abcam is leading the way in addressing this with our range of recombinant monoclonal antibodies and knockout edited cell lines for gold-standard validation. Please check that this product meets your needs before purchasing.</p> <p>If you have any questions, special requirements or concerns, please send us an inquiry and/or contact our Support team ahead of purchase. Recommended alternatives for this product can be found below, along with publications, customer reviews and Q&amp;As</p>

### Properties

---

<b>Form</b>	Liquid
<b>Storage instructions</b>	Shipped at 4°C. Upon delivery aliquot and store at -20°C. Avoid freeze / thaw cycles.
<b>Storage buffer</b>	Constituent: PBS
<b>Carrier free</b>	Yes
<b>Purity</b>	Protein G purified

<b>Clonality</b>	Monoclonal
<b>Clone number</b>	272-17E6
<b>Isotype</b>	IgG1
<b>Light chain type</b>	kappa

## Applications

**The Abpromise guarantee** Our **Abpromise guarantee** covers the use of ab16821 in the following tested applications.

The application notes include recommended starting dilutions; optimal dilutions/concentrations should be determined by the end user.

Application	Abreviews	Notes
<b>Flow Cyt (Intra)</b>		Use at an assay dependent concentration. <b>ab170190</b> - Mouse monoclonal IgG1, is suitable for use as an isotype control with this antibody.

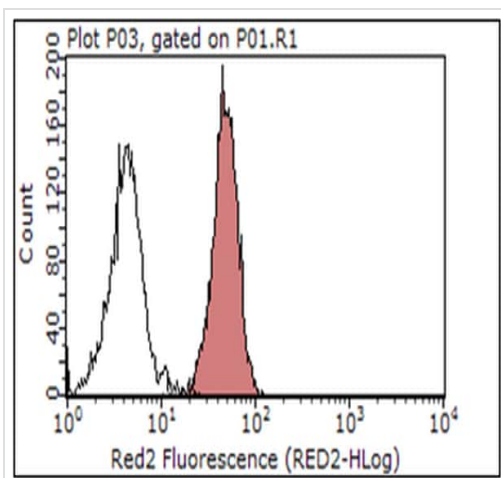
## Target

**Function** The alpha-V integrins are receptors for vitronectin, cytotactin, fibronectin, fibrinogen, laminin, matrix metalloproteinase-2, osteopontin, osteomodulin, prothrombin, thrombospondin and vWF. They recognize the sequence R-G-D in a wide array of ligands. In case of HIV-1 infection, the interaction with extracellular viral Tat protein seems to enhance angiogenesis in Kaposi's sarcoma lesions.

**Sequence similarities** Belongs to the integrin alpha chain family.  
Contains 7 FG-GAP repeats.

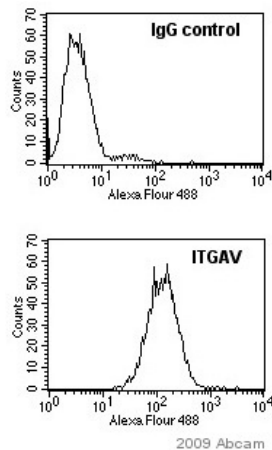
**Cellular localization** Membrane.

## Images



Intracellular Flow Cytometry analysis of HeLa cells labeling Integrin alpha V with ab16821 at 0.5 µg (red), or with 1 µg of Mouse IgG isotype control.

Flow Cytometry (Intracellular) - Anti-Integrin alpha V antibody [272-17E6] - BSA and Azide free (ab16821)



Flow Cytometry (Intracellular) - Anti-Integrin alpha V antibody [272-17E6] - BSA and Azide free (ab16821)

This image is a courtesy of Anonymous Abreview

ab16821 staining Integrin alpha V in Human melanoma cells by intracellular Flow Cytometry. Samples were prepared by trypsinizing cells, treatment with STI and spun out trypsin, kept on ice during experiment duration. FSC and SSC were used to gate healthy cell population, which excluded PI positive cells. The primary antibody was diluted 1/250 and incubated with sample for 1 hour at 4°C in 2% FCS/0.1% NaAzide/PBS. An Alexa Fluor® 488-conjugated Goat polyclonal to mouse IgG was used at dilution at 1/500 as secondary antibody.

This image was generated using the ascites version of the product.

**Please note:** All products are "FOR RESEARCH USE ONLY. NOT FOR USE IN DIAGNOSTIC PROCEDURES"

### Our Abpromise to you: Quality guaranteed and expert technical support

- Replacement or refund for products not performing as stated on the datasheet
- Valid for 12 months from date of delivery
- Response to your inquiry within 24 hours
- We provide support in Chinese, English, French, German, Japanese and Spanish
- Extensive multi-media technical resources to help you
- We investigate all quality concerns to ensure our products perform to the highest standards

If the product does not perform as described on this datasheet, we will offer a refund or replacement. For full details of the Abpromise, please visit <https://www.abcam.com/abpromise> or contact our technical team.

### Terms and conditions

- Guarantee only valid for products bought direct from Abcam or one of our authorized distributors