


Product datasheet

Anti-Integrin beta 5 antibody ab31327

★★★★☆ [1 Abreviews](#) [2 References](#) [1 Image](#)

Overview

Product name	Anti-Integrin beta 5 antibody
Description	Goat polyclonal to Integrin beta 5
Host species	Goat
Tested applications	Suitable for: WB
Species reactivity	Reacts with: Human Predicted to work with: Mouse, Rat, Cow, Dog, Pig 
Immunogen	Synthetic peptide: (C)TFNKFNKSYPGTVD , corresponding to C terminal amino acids 786-799 of Human Integrin beta 5 Run BLAST with Run BLAST with

General notes

The Life Science industry has been in the grips of a reproducibility crisis for a number of years. Abcam is leading the way in addressing this with our range of recombinant monoclonal antibodies and knockout edited cell lines for gold-standard validation. Please check that this product meets your needs before purchasing.

If you have any questions, special requirements or concerns, please send us an inquiry and/or contact our Support team ahead of purchase. Recommended alternatives for this product can be found below, along with publications, customer reviews and Q&As

Properties

Form	Liquid
Storage instructions	Shipped at 4°C. Upon delivery aliquot and store at -20°C. Avoid freeze / thaw cycles.
Storage buffer	pH: 7.30 Preservative: 0.02% Sodium azide Constituents: Tris buffered saline, 0.5% BSA
Purity	Immunogen affinity purified
Purification notes	Purified from goat serum by ammonium sulphate precipitation followed by antigen affinity chromatography using the immunizing peptide.
Clonality	Polyclonal
Isotype	IgG

Applications

The Abpromise guarantee

Our **Abpromise guarantee** covers the use of ab31327 in the following tested applications.

The application notes include recommended starting dilutions; optimal dilutions/concentrations should be determined by the end user.

Application	Abreviews	Notes
WB	★★★★★ (1)	

Application notes

WB: 1/2000. Detects a band of approximately 110 kDa (predicted molecular weight: 88 kDa).

Can be blocked with **Integrin beta 5 peptide (786-799) (ab45697)**.

ELISA: This antibody gave a positive result in ELISA against the immunizing peptide. Antibody detection limit dilution 1:16,000.

Not yet tested in other applications.

Optimal dilutions/concentrations should be determined by the end user.

Target

Function

Integrin alpha-V/beta-5 is a receptor for fibronectin. It recognizes the sequence R-G-D in its ligand.

Sequence similarities

Belongs to the integrin beta chain family.

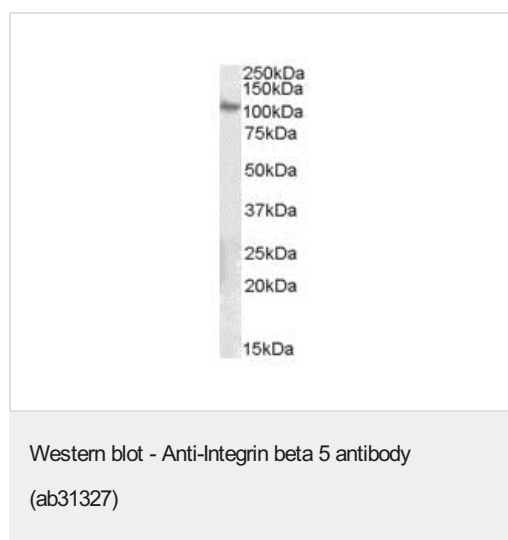
Contains 1 PSI domain.

Contains 1 VWFA domain.

Cellular localization

Membrane.

Images



Anti-Integrin beta 5 antibody (ab31327) at 0.1 µg/ml + Tissue lysates prepared from Human Ovary at 35 µg

Predicted band size: 88 kDa

Primary incubation was for 1 hour. Detected by chemiluminescence

Please note: All products are "FOR RESEARCH USE ONLY. NOT FOR USE IN DIAGNOSTIC PROCEDURES"

Our Abpromise to you: Quality guaranteed and expert technical support

- Replacement or refund for products not performing as stated on the datasheet
- Valid for 12 months from date of delivery
- Response to your inquiry within 24 hours

- We provide support in Chinese, English, French, German, Japanese and Spanish
- Extensive multi-media technical resources to help you
- We investigate all quality concerns to ensure our products perform to the highest standards

If the product does not perform as described on this datasheet, we will offer a refund or replacement. For full details of the Abpromise, please visit <https://www.abcam.com/abpromise> or contact our technical team.

Terms and conditions

- Guarantee only valid for products bought direct from Abcam or one of our authorized distributors