

Product datasheet

Anti-Integrin beta 7 antibody [EP5948] ab137058

Recombinant RabMAb

[1 Abreviews](#) [3 Images](#)

Overview

Product name	Anti-Integrin beta 7 antibody [EP5948]
Description	Rabbit monoclonal [EP5948] to Integrin beta 7
Host species	Rabbit
Tested applications	Suitable for: WB, IP Unsuitable for: Flow Cyt, ICC/IF or IHC-P
Species reactivity	Reacts with: Human
Immunogen	Synthetic peptide. This information is proprietary to Abcam and/or its suppliers.
Positive control	WB: IM-9 cell lysate. IP: IM-9 whole cell lysate.
General notes	<p>This product is a recombinant monoclonal antibody, which offers several advantages including:</p> <ul style="list-style-type: none">- High batch-to-batch consistency and reproducibility- Improved sensitivity and specificity- Long-term security of supply- Animal-free production <p>For more information see here.</p> <p>Our RabMAb[®] technology is a patented hybridoma-based technology for making rabbit monoclonal antibodies. For details on our patents, please refer to RabMAb[®] patents.</p> <p>Mouse, Rat: We have preliminary internal testing data to indicate this antibody may not react with these species. Please contact us for more information.</p>

Properties

Form	Liquid
Storage instructions	Shipped at 4°C. Store at -20°C.
Storage buffer	pH: 7.2 Preservative: 0.01% Sodium azide Constituents: 9% PBS, 40% Glycerol (glycerin, glycerine), 0.05% BSA, 50% Tissue culture supernatant
Purity	Protein A purified
Clonality	Monoclonal

Clone number EP5948

Isotype IgG

Applications

The Abpromise guarantee Our **Abpromise guarantee** covers the use of ab137058 in the following tested applications.

The application notes include recommended starting dilutions; optimal dilutions/concentrations should be determined by the end user.

Application	Abreviews	Notes
WB		1/1000 - 1/10000. Predicted molecular weight: 87 kDa.
IP		1/10 - 1/100.

Application notes Is unsuitable for Flow Cyt, ICC/IF or IHC-P.

Target

Function Integrin alpha-4/beta-7 (Peyer patches-specific homing receptor LPAM-1) is an adhesion molecule that mediates lymphocyte migration and homing to gut-associated lymphoid tissue (GALT). Integrin alpha-4/beta-7 interacts with the cell surface adhesion molecules MADCAM1 which is normally expressed by the vascular endothelium of the gastrointestinal tract. Interacts also with VCAM1 and fibronectin, an extracellular matrix component. It recognizes one or more domains within the alternatively spliced CS-1 region of fibronectin. Interactions involves the tripeptide L-D-T in MADCAM1, and L-D-V in fibronectin. Binds to HIV-1 gp120, thereby allowing the virus to enter GALT, which is thought to be the major trigger of AIDS disease. Interaction would involve a tripeptide L-D-I in HIV-1 gp120. Integrin alpha-E/beta-7 (HML-1) is a receptor for E-cadherin.

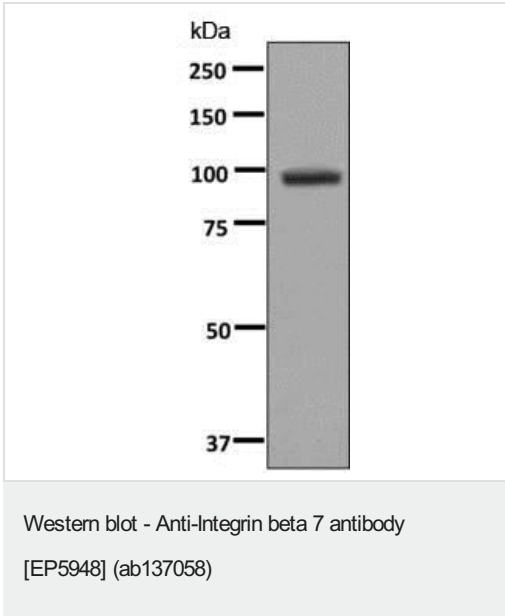
Tissue specificity Expressed in a variety of leukocyte lines.

Sequence similarities Belongs to the integrin beta chain family.
Contains 1 VWFA domain.

Domain Domain I contains three cation-binding sites: the ligand-integrin-binding site (LIMBS), the metal ion-dependent adhesion site (MIDAS), and the adjacent to MIDAS site (ADMIDAS). In the absence of a ligand or in calcium-dependent binding, only ADMIDAS is occupied. In magnesium-dependent binding all three sites bind metal ions. LIMBS positively modify ligand binding whereas ADMIDAS negatively modify ligand binding.

Cellular localization Membrane.

Images

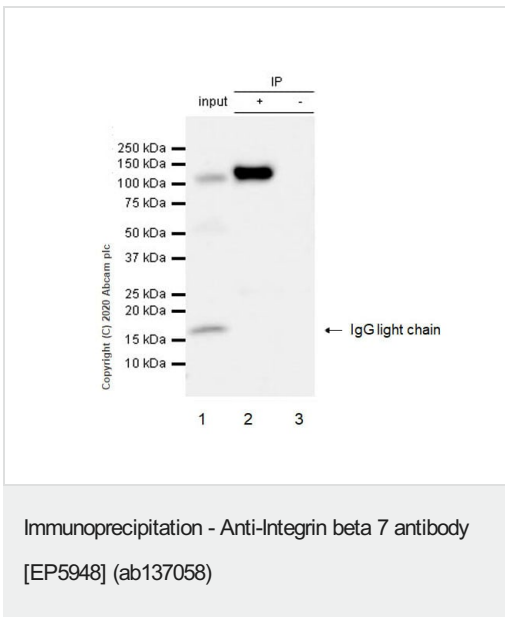


Anti-Integrin beta 7 antibody [EP5948] (ab137058) at 1/1000 dilution + IM-9 cell lysate at 10 µg

Secondary

HRP labeled Goat anti-Rabbit IgG at 1/2000 dilution

Predicted band size: 87 kDa



purified ab137058 at 1/50 dilution (2µg) immunoprecipitating Integrin beta 7 in IM-9 whole cell lysate.

Lane 1 (input): IM-9 (Human multiple myeloma B Lymphoblast) whole cell lysate 10µg

Lane 2 (+): ab137058 + IM-9 whole cell lysate.

Lane 3 (-): Rabbit monoclonal IgG (**ab172730**) instead of ab137058 in IM-9 whole cell lysate.

VeriBlot for IP Detection Reagent (HRP) (**ab131366**) (1/1000 dilution) was used for Western blotting.

Blocking Buffer and concentration: 5% NFDm/TBST.

Diluting buffer and concentration: 5% NFDm/TBST.

Observed band size: 100-120 kDa

Why choose a recombinant antibody?

Research with confidence
Consistent and reproducible results

Long-term and scalable supply
Recombinant technology

Success from the first experiment
Confirmed specificity

Ethical standards compliant
Animal-free production

Anti-Integrin beta 7 antibody [EP5948] (ab137058)

Please note: All products are "FOR RESEARCH USE ONLY. NOT FOR USE IN DIAGNOSTIC PROCEDURES"

Our Abpromise to you: Quality guaranteed and expert technical support

- Replacement or refund for products not performing as stated on the datasheet
- Valid for 12 months from date of delivery
- Response to your inquiry within 24 hours
- We provide support in Chinese, English, French, German, Japanese and Spanish
- Extensive multi-media technical resources to help you
- We investigate all quality concerns to ensure our products perform to the highest standards

If the product does not perform as described on this datasheet, we will offer a refund or replacement. For full details of the Abpromise, please visit <https://www.abcam.com/abpromise> or contact our technical team.

Terms and conditions

- Guarantee only valid for products bought direct from Abcam or one of our authorized distributors