




Product datasheet

Anti-Integrin linked ILK antibody ab217025

4 Images

Overview

Product name	Anti-Integrin linked ILK antibody
Description	Rabbit polyclonal to Integrin linked ILK
Host species	Rabbit
Tested applications	Suitable for: WB, IHC-P, ICC/IF
Species reactivity	Reacts with: Rat, Human Predicted to work with: Mouse 
Immunogen	Synthetic peptide within Human Integrin linked ILK aa 300-400 conjugated to keyhole limpet haemocyanin. The exact immunogen sequence used to generate this antibody is proprietary information. If additional detail on the immunogen is needed to determine the suitability of the antibody for your needs, please contact our Scientific Support team to discuss your requirements. Database link: Q13418 <div>  Run BLAST with  Run BLAST with </div>
Positive control	Rat kidney tissue; human colon carcinoma lysate; A549 and MCF7 cells.
General notes	<p>The Life Science industry has been in the grips of a reproducibility crisis for a number of years. Abcam is leading the way in addressing this with our range of recombinant monoclonal antibodies and knockout edited cell lines for gold-standard validation. Please check that this product meets your needs before purchasing.</p> <p>If you have any questions, special requirements or concerns, please send us an inquiry and/or contact our Support team ahead of purchase. Recommended alternatives for this product can be found below, along with publications, customer reviews and Q&As</p>

Properties

Form	Liquid
Storage instructions	Shipped at 4°C. Store at +4°C short term (1-2 weeks). Upon delivery aliquot. Store at -20°C long term. Avoid freeze / thaw cycle.
Storage buffer	pH: 7.40 Preservative: 0.02% Proclin 300 Constituents: 50% Glycerol (glycerin, glycerine), 1% BSA, 48.98% TBS, 1X
Purity	Protein A purified

Clonality	Polyclonal
Isotype	IgG

Applications

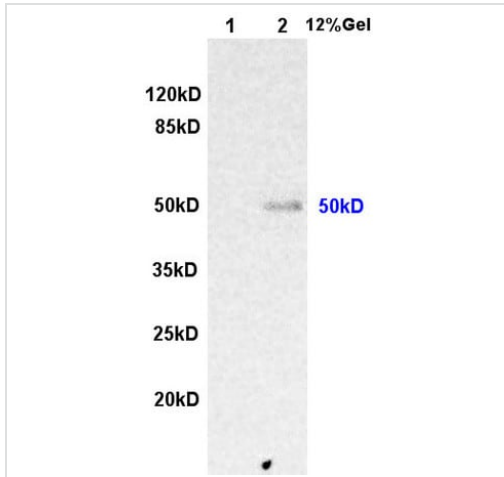
The Abpromise guarantee Our **Abpromise guarantee** covers the use of ab217025 in the following tested applications. The application notes include recommended starting dilutions; optimal dilutions/concentrations should be determined by the end user.

Application	Abreviews	Notes
WB		1/200. Predicted molecular weight: 51 kDa.
IHC-P		1/100 - 1/500.
ICC/IF		1/50 - 1/200.

Target

Function	Receptor-proximal protein kinase regulating integrin-mediated signal transduction. May act as a mediator of inside-out integrin signaling. Focal adhesion protein part of the complex ILK-PINCH. This complex is considered to be one of the convergence points of integrin- and growth factor-signaling pathway. Could be implicated in mediating cell architecture, adhesion to integrin substrates and anchorage-dependent growth in epithelial cells. Phosphorylates beta-1 and beta-3 integrin subunit on serine and threonine residues, but also AKT1 and GSK3B.
Tissue specificity	Highly expressed in heart followed by skeletal muscle, pancreas and kidney. Weakly expressed in placenta, lung and liver.
Sequence similarities	Belongs to the protein kinase superfamily. TKL Ser/Thr protein kinase family. Contains 5 ANK repeats. Contains 1 protein kinase domain.
Domain	A PH-like domain is involved in phosphatidylinositol phosphate binding.
Post-translational modifications	Autophosphorylated on serine residues.
Cellular localization	Cell junction > focal adhesion. Cell membrane.

Images



Western blot - Anti-Integrin linked ILK antibody (ab217025)

All lanes : Anti-Integrin linked ILK antibody (ab217025) at 1/200 dilution

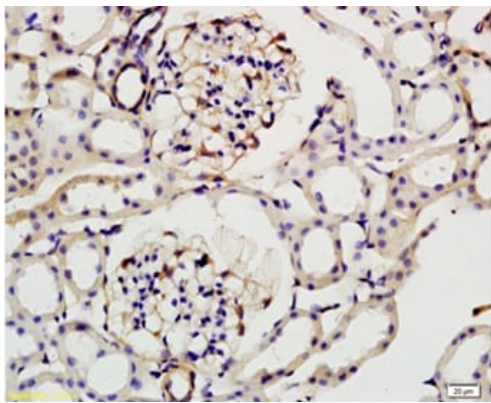
Lane 1 : rat kidney lysates

Lane 2 : human colon carcinoma lysates

Secondary

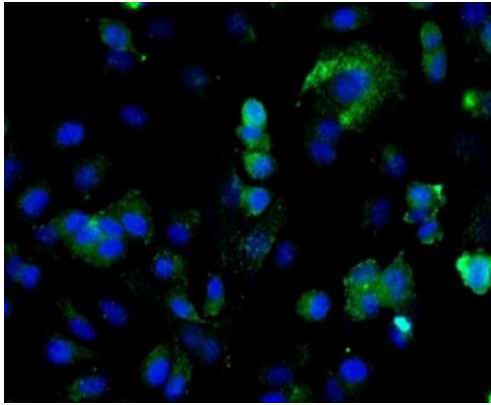
All lanes : Conjugated secondary antibody at 1/3000 dilution

Predicted band size: 51 kDa



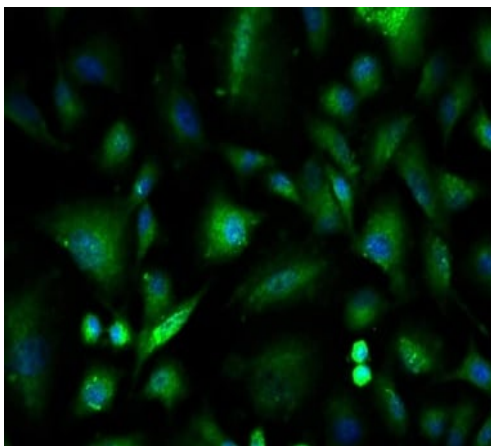
Immunohistochemistry (Formalin/PFA-fixed paraffin-embedded sections) - Anti-Integrin linked ILK antibody (ab217025)

Immunohistochemical analysis of formalin-fixed and paraffin embedded rat kidney tissue labeling Integrin linked ILK with ab217025 at 1/200 dilution followed by conjugation to the secondary antibody and DAB staining.



Immunocytochemistry/ Immunofluorescence - Anti-
Integrin linked ILK antibody (ab217025)

Immunofluorescent analysis of MCF7 cells labeling Integrin linked ILK with ab217025 at 1/50 dilution, followed by Goat Anti-Rabbit IgG (H+L) Alexa Fluor 488 Conjugated secondary antibody detection.



Immunocytochemistry/ Immunofluorescence - Anti-
Integrin linked ILK antibody (ab217025)

Immunofluorescent analysis of A549 cells labeling Integrin linked ILK with ab217025 at 1/50 dilution, followed by Goat Anti-Rabbit IgG (H+L) Alexa Fluor 488 Conjugated secondary antibody detection.

Please note: All products are "FOR RESEARCH USE ONLY. NOT FOR USE IN DIAGNOSTIC PROCEDURES"

Our Abpromise to you: Quality guaranteed and expert technical support

- Replacement or refund for products not performing as stated on the datasheet
- Valid for 12 months from date of delivery
- Response to your inquiry within 24 hours
- We provide support in Chinese, English, French, German, Japanese and Spanish
- Extensive multi-media technical resources to help you

- We investigate all quality concerns to ensure our products perform to the highest standards

If the product does not perform as described on this datasheet, we will offer a refund or replacement. For full details of the Abpromise, please visit <https://www.abcam.com/abpromise> or contact our technical team.

Terms and conditions

- Guarantee only valid for products bought direct from Abcam or one of our authorized distributors