


Product datasheet

Anti-Interferon beta antibody ab85803

★★★★★ [1 Abreviews](#) [5 References](#) [2 Images](#)

Overview

Product name	Anti-Interferon beta antibody
Description	Rabbit polyclonal to Interferon beta
Host species	Rabbit
Specificity	From Jan 2024, QC testing of replenishment batches of this polyclonal changed. All tested and expected application and reactive species combinations are still covered by our Abcam product promise. However, we no longer test all applications. For more information on a specific batch, please contact our Scientific Support who will be happy to help.
Tested applications	Suitable for: WB, ICC/IF
Species reactivity	Reacts with: Human Predicted to work with: Mouse, Macaque monkey 
Immunogen	Synthetic peptide corresponding to Human Interferon beta aa 1-100 conjugated to keyhole limpet haemocyanin.
Positive control	Recombinant human Interferon beta protein (ab71475) can be used as a positive control in WB. This antibody gave a positive signal in HepG2 and WI38 whole cell lysates and in the following human tissue lysates: Liver; Lung; Kidney; Spleen.
General notes	<p>The Life Science industry has been in the grips of a reproducibility crisis for a number of years. Abcam is leading the way in addressing this with our range of recombinant monoclonal antibodies and knockout edited cell lines for gold-standard validation. Please check that this product meets your needs before purchasing.</p> <p>If you have any questions, special requirements or concerns, please send us an inquiry and/or contact our Support team ahead of purchase. Recommended alternatives for this product can be found below, along with publications, customer reviews and Q&As</p>

Properties

Form	Liquid
Storage instructions	Shipped at 4°C. Store at +4°C short term (1-2 weeks). Upon delivery aliquot. Store at -20°C or -80°C. Avoid freeze / thaw cycle.
Storage buffer	pH: 7.40 Preservative: 0.02% Sodium azide Constituent: PBS

Batches of this product that have a concentration < 1mg/ml may have BSA added as a stabilising agent. If you would like information about the formulation of a specific lot, please contact our scientific support team who will be happy to help.

Purity	Immunogen affinity purified
Clonality	Polyclonal
Isotype	IgG

Applications

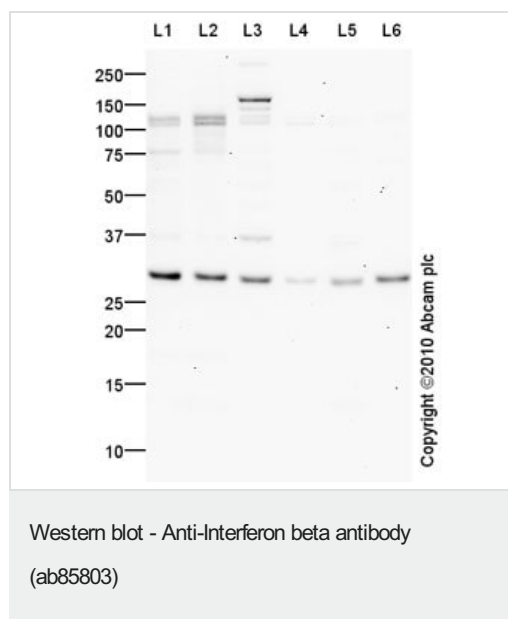
The Abpromise guarantee Our **Abpromise guarantee** covers the use of ab85803 in the following tested applications. The application notes include recommended starting dilutions; optimal dilutions/concentrations should be determined by the end user.

Application	Abreviews	Notes
WB	★★★★★ (1)	Use a concentration of 1 µg/ml. Detects a band of approximately 30 kDa (predicted molecular weight: 22 kDa).
ICC/IF		Use a concentration of 1 µg/ml.

Target

Function	Has antiviral, antibacterial and anticancer activities.
Sequence similarities	Belongs to the alpha/beta interferon family.
Cellular localization	Secreted.

Images



All lanes : Anti-Interferon beta antibody (ab85803) at 1 µg/ml

Lane 1 : HepG2 (Human hepatocellular liver carcinoma cell line) Whole Cell Lysate

Lane 2 : WI-38 whole cell lysate ([ab3960](#))

Lane 3 : Human liver tissue lysate - total protein ([ab29889](#))

Lane 4 : Lung (Human) Tissue Lysate

Lane 5 : Human kidney tissue lysate - total protein ([ab30203](#))

Lane 6 : Human spleen tissue lysate - total protein ([ab29699](#))

Lysates/proteins at 10 µg per lane.

Secondary

All lanes : Goat polyclonal to Rabbit IgG - H&L - Pre-Adsorbed (HRP) at 1/3000 dilution

Developed using the ECL technique.

Performed under reducing conditions.

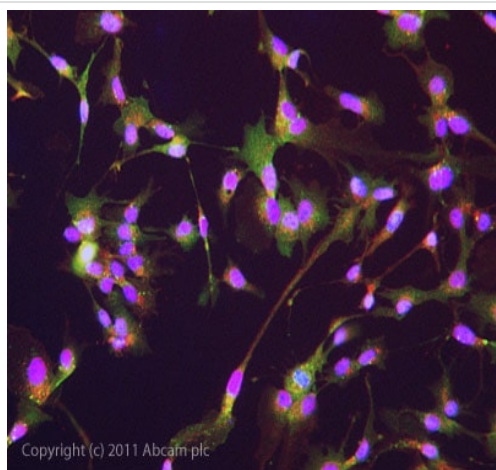
Predicted band size: 22 kDa

Observed band size: 30 kDa

Additional bands at: 110 kDa, 120 kDa, 160 kDa, 37 kDa. We are unsure as to the identity of these extra bands.

Exposure time: 20 minutes

The Interferon Beta protein sequence contains both a phosphorylation and a glycosylation site (Swissprot). Post-translation modifications could account for the migration of the band at a higher molecular weight than predicted.



ICC/IF image of ab85803 stained HepG2 cells. The cells were 4% PFA fixed (10 min) and then incubated in 1%BSA / 10% normal goat serum / 0.3M glycine in 0.1% PBS-Tween for 1h to permeabilise the cells and block non-specific protein-protein interactions. The cells were then incubated with the antibody (ab85803, 5µg/ml) overnight at +4°C. The secondary antibody (green) was **ab96899** Dylight 488 goat anti-rabbit IgG (H+L) used at a 1/250 dilution for 1h. Alexa Fluor® 594 WGA was used to label plasma membranes (red) at a 1/200 dilution for 1h. DAPI was used to stain the cell nuclei (blue) at a concentration of 1.43µM.

Immunocytochemistry/ Immunofluorescence - Anti-Interferon beta antibody (ab85803)

Please note: All products are "FOR RESEARCH USE ONLY. NOT FOR USE IN DIAGNOSTIC PROCEDURES"

Our Promise to you: Quality guaranteed and expert technical support

- Replacement or refund for products not performing as stated on the datasheet
- Valid for 12 months from date of delivery
- Response to your inquiry within 24 hours
- We provide support in Chinese, English, French, German, Japanese and Spanish
- Extensive multi-media technical resources to help you
- We investigate all quality concerns to ensure our products perform to the highest standards

If the product does not perform as described on this datasheet, we will offer a refund or replacement. For full details of the Abpromise, please visit <https://www.abcam.com/abpromise> or contact our technical team.

Terms and conditions

- Guarantee only valid for products bought direct from Abcam or one of our authorized distributors