

# Anti-Interferon gamma antibody ab25101

★★★★☆ [4 Abreviews](#) [19 References](#) [2 Images](#)

### Overview

<b>Product name</b>	Anti-Interferon gamma antibody
<b>Description</b>	Rabbit polyclonal to Interferon gamma
<b>Host species</b>	Rabbit
<b>Specificity</b>	This antibody neutralizes both natural and recombinant human IFN gamma. Activity =10 <sup>4</sup> Neutralizing U/mg protein.
<b>Tested applications</b>	<b>Suitable for:</b> Sandwich ELISA, IHC-P
<b>Species reactivity</b>	<b>Reacts with:</b> Human, Recombinant fragment
<b>Immunogen</b>	Recombinant full length protein corresponding to Human Interferon gamma. Database link: <a href="#">P01579</a>
<b>General notes</b>	<p>The Life Science industry has been in the grips of a reproducibility crisis for a number of years. Abcam is leading the way in addressing this with our range of recombinant monoclonal antibodies and knockout edited cell lines for gold-standard validation. Please check that this product meets your needs before purchasing.</p> <p>If you have any questions, special requirements or concerns, please send us an inquiry and/or contact our Support team ahead of purchase. Recommended alternatives for this product can be found below, along with publications, customer reviews and Q&amp;As</p>

### Properties

<b>Form</b>	Liquid
<b>Storage instructions</b>	Shipped at 4°C. Store at +4°C short term (1-2 weeks). Upon delivery aliquot. Store at -20°C long term.
<b>Storage buffer</b>	Constituents: 4.275% Trehalose, 95.725% PBS
<b>Purity</b>	Immunogen affinity purified
<b>Purification notes</b>	The antibody was sequentially purified by ammonium sulphate precipitation and protein affinity chromatography. The antibody was then membrane filtered (0.2 µm) for sterility.
<b>Clonality</b>	Polyclonal
<b>Isotype</b>	IgG

### Applications

## The Abpromise guarantee

Our **Abpromise guarantee** covers the use of ab25101 in the following tested applications.

The application notes include recommended starting dilutions; optimal dilutions/concentrations should be determined by the end user.

Application	Abreviews	Notes
Sandwich ELISA		Use a concentration of 0.5 µg/ml. Can be paired for Sandwich ELISA with <b>Mouse monoclonal [MD-1] to Interferon gamma (ab25014)</b> . For sandwich ELISA, use this antibody as detection at 0.5µg/ml with <b>ab25014</b> as capture.
IHC-P		Use a concentration of 1 µg/ml. Perform heat mediated antigen retrieval before commencing with IHC staining protocol.

## Target

### Function

Produced by lymphocytes activated by specific antigens or mitogens. IFN-gamma, in addition to having antiviral activity, has important immunoregulatory functions. It is a potent activator of macrophages, it has antiproliferative effects on transformed cells and it can potentiate the antiviral and antitumor effects of the type I interferons.

### Tissue specificity

Released primarily from activated T lymphocytes.

### Involvement in disease

In Caucasians, genetic variation in IFNG is associated with the risk of aplastic anemia (AA) [MIM:609135]. AA is a rare disease in which the reduction of the circulating blood cells results from damage to the stem cell pool in bone marrow. In most patients, the stem cell lesion is caused by an autoimmune attack. T-lymphocytes, activated by an endogenous or exogenous, and most often unknown antigenic stimulus, secrete cytokines, including IFN-gamma, which would in turn be able to suppress hematopoiesis.

### Sequence similarities

Belongs to the type II (or gamma) interferon family.

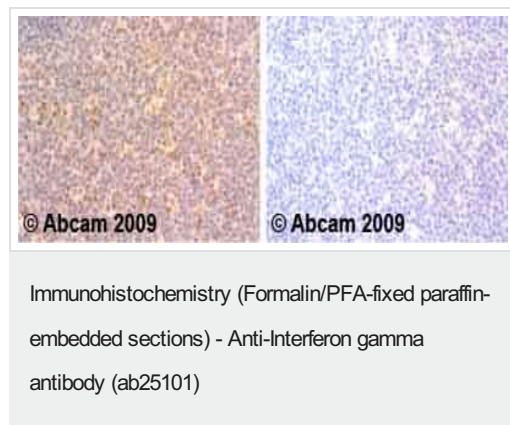
### Post-translational modifications

Proteolytic processing produces C-terminal heterogeneity, with proteins ending alternatively at Gly-150, Met-157 or Gly-161.

### Cellular localization

Secreted.

## Images

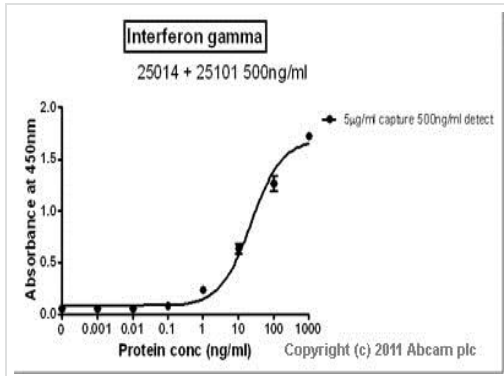


ab25101 staining Human tonsil. Staining is localised to the cytoplasm and protein is secreted.

Left panel: with primary antibody at 1 µg/ml. Right panel: isotype control.

Sections were stained using an automated system DAKO Autostainer Plus, at room temperature. Sections were rehydrated and antigen retrieved with the Dako 3-in-1 antigen retrieval buffer EDTA pH 9.0 in a DAKO PT Link. Slides were peroxidase blocked in 3% H<sub>2</sub>O<sub>2</sub> in methanol for 10 minutes. They were then blocked with Dako Protein block for 10 minutes (containing casein 0.25% in PBS) then incubated with primary antibody for 20 minutes and

detected with Dako Envision Flex amplification kit for 30 minutes. Colorimetric detection was completed with diaminobenzidine for 5 minutes. Slides were counterstained with Haematoxylin and coverslipped under DePeX. Please note that for manual staining we recommend to optimize the primary antibody concentration and incubation time (overnight incubation), and amplification may be



Standard curve for Interferon gamma (analyte: **ab51240**); dilution range 1pg/ml to 1µg/ml using capture antibody **ab25014** at 5µg/ml and detector antibody ab25101 at 0.5µg/ml.

Sandwich ELISA - Anti-Interferon gamma antibody (ab25101)

**Please note:** All products are "FOR RESEARCH USE ONLY. NOT FOR USE IN DIAGNOSTIC PROCEDURES"

### Our Abpromise to you: Quality guaranteed and expert technical support

- Replacement or refund for products not performing as stated on the datasheet
- Valid for 12 months from date of delivery
- Response to your inquiry within 24 hours
- We provide support in Chinese, English, French, German, Japanese and Spanish
- Extensive multi-media technical resources to help you
- We investigate all quality concerns to ensure our products perform to the highest standards

If the product does not perform as described on this datasheet, we will offer a refund or replacement. For full details of the Abpromise, please visit <https://www.abcam.com/abpromise> or contact our technical team.

### Terms and conditions

- Guarantee only valid for products bought direct from Abcam or one of our authorized distributors