



## Product datasheet

# Anti-Involucrin antibody [IVRN/2113R] - BSA and Azide free ab236273

Recombinant

2 Images

### Overview

<b>Product name</b>	Anti-Involucrin antibody [IVRN/2113R] - BSA and Azide free
<b>Description</b>	Rabbit monoclonal [IVRN/2113R] to Involucrin - BSA and Azide free
<b>Host species</b>	Rabbit
<b>Tested applications</b>	<b>Suitable for:</b> IHC-P
<b>Species reactivity</b>	<b>Reacts with:</b> Human <b>Does not react with:</b> Mouse
<b>Immunogen</b>	Recombinant full length protein corresponding to Human Involucrin aa 1 to the C-terminus. Database link: <a href="#">P07476</a>
	 <a href="#">Run BLAST with</a>  <a href="#">Run BLAST with</a>
<b>Positive control</b>	IHC-P: Human tonsil tissue.

### Properties

<b>Form</b>	Liquid
<b>Storage instructions</b>	Shipped at 4°C. Store at +4°C short term (1-2 weeks). Upon delivery aliquot. Store at -20°C long term. Avoid freeze / thaw cycle.
<b>Storage buffer</b>	pH: 7.2 Constituent: PBS
<b>Carrier free</b>	Yes
<b>Purity</b>	Protein A/G purified
<b>Purification notes</b>	Purified from bioreactor concentrate by Protein A/G.
<b>Clonality</b>	Monoclonal
<b>Clone number</b>	IVRN/2113R
<b>Isotype</b>	IgG

### Applications

## The Abpromise guarantee

Our **Abpromise guarantee** covers the use of ab236273 in the following tested applications.

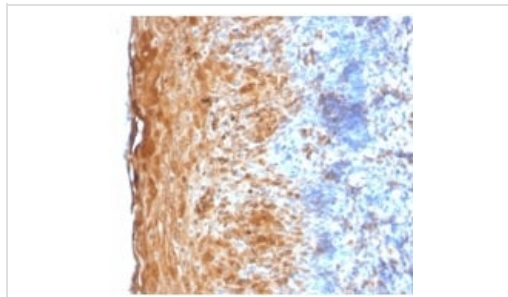
The application notes include recommended starting dilutions; optimal dilutions/concentrations should be determined by the end user.

Application	Abreviews	Notes
IHC-P		Use a concentration of 0.1 - 0.2 µg/ml. Staining of formalin-fixed tissues is enhanced by digestion with trypsin or Protease XXV at 1 mg/ml PBS for 5 minutes at 37°C. (Note that enzyme digestion is better than citrate buffer based epitope unmasking). Incubate with primary antibody for 30 minutes at room temperature.

## Target

Function	Part of the insoluble cornified cell envelope (CE) of stratified squamous epithelia.
Tissue specificity	Keratinocytes of epidermis and other stratified squamous epithelia.
Sequence similarities	Belongs to the involucrin family.
Post-translational modifications	Substrate of transglutaminase. Some glutamines and lysines are cross-linked to other involucrin molecules, to other proteins such as keratin, desmoplakin, periplakin and envoplakin, and to lipids like omega-hydroxyceramide.
Cellular localization	Cytoplasm. Constituent of the scaffolding of the cornified envelope.

## Images



Immunohistochemistry (Formalin/PFA-fixed paraffin-embedded sections) - Anti-Involucrin antibody [IVRN/2113R] - BSA and Azide free (ab236273)

Formalin-fixed, paraffin-embedded human tonsil tissue stained for Involucrin with **ab234403** at 0.2 µg/ml in immunohistochemical analysis.

This data was developed using the same antibody clone in a different buffer formulation containing PBS, BSA and sodium azide (**ab234403**).

### Why choose a recombinant antibody?



**Research with confidence**  
Consistent and reproducible results



**Long-term and scalable supply**  
Recombinant technology



**Success from the first experiment**  
Confirmed specificity



**Ethical standards compliant**  
Animal-free production

Anti-Involucrin antibody [IVRN/2113R] - BSA and Azide free (ab236273)

**Please note:** All products are "FOR RESEARCH USE ONLY. NOT FOR USE IN DIAGNOSTIC PROCEDURES"

### Our Abpromise to you: Quality guaranteed and expert technical support

---

- Replacement or refund for products not performing as stated on the datasheet
- Valid for 12 months from date of delivery
- Response to your inquiry within 24 hours
- We provide support in Chinese, English, French, German, Japanese and Spanish
- Extensive multi-media technical resources to help you
- We investigate all quality concerns to ensure our products perform to the highest standards

If the product does not perform as described on this datasheet, we will offer a refund or replacement. For full details of the Abpromise, please visit <https://www.abcam.com/abpromise> or contact our technical team.

### Terms and conditions

---

- Guarantee only valid for products bought direct from Abcam or one of our authorized distributors