

Anti-Involucrin antibody - N-terminal ab227530

4 Images

Overview

Product name	Anti-Involucrin antibody - N-terminal
Description	Rabbit polyclonal to Involucrin - N-terminal
Host species	Rabbit
Tested applications	Suitable for: WB, ICC/IF, IHC-P
Species reactivity	Reacts with: Human
Immunogen	Synthetic peptide within Human Involucrin (N terminal). The exact sequence is proprietary. Conjugated to a protein carrier. Database link: P07476
Positive control	WB: Involucrin transfected HEK-293T whole cell extract. Jurkat, Raji and NCI-H929 whole cell extract. ICC/IF: A431 cells. IHC-P: H661 xenograft.
General notes	<p>The Life Science industry has been in the grips of a reproducibility crisis for a number of years. Abcam is leading the way in addressing this with our range of recombinant monoclonal antibodies and knockout edited cell lines for gold-standard validation. Please check that this product meets your needs before purchasing.</p> <p>If you have any questions, special requirements or concerns, please send us an inquiry and/or contact our Support team ahead of purchase. Recommended alternatives for this product can be found below, along with publications, customer reviews and Q&As</p>

Properties

Form	Liquid
Storage instructions	Shipped at 4°C. Store at +4°C short term (1-2 weeks). Upon delivery aliquot. Store at -20°C long term. Avoid freeze / thaw cycle.
Storage buffer	pH: 7.00 Preservative: 0.025% Proclin 300 Constituents: 79% PBS, 20% Glycerol (glycerin, glycerine)
Purity	Immunogen affinity purified
Clonality	Polyclonal
Isotype	IgG

Applications

The Abpromise guarantee Our **Abpromise guarantee** covers the use of ab227530 in the following tested applications.

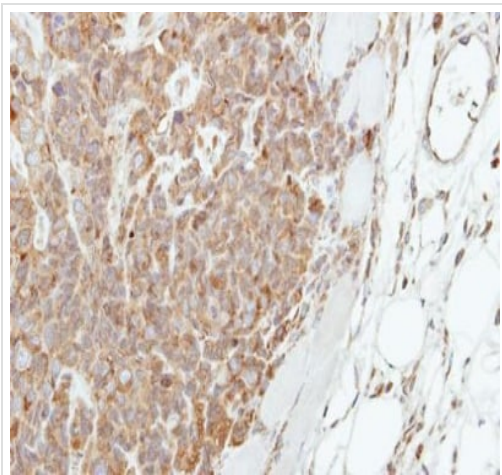
The application notes include recommended starting dilutions; optimal dilutions/concentrations should be determined by the end user.

Application	Abreviews	Notes
WB		1/500 - 1/3000. Predicted molecular weight: 68 kDa.
ICC/IF		1/100 - 1/1000.
IHC-P		1/100 - 1/1000.

Target

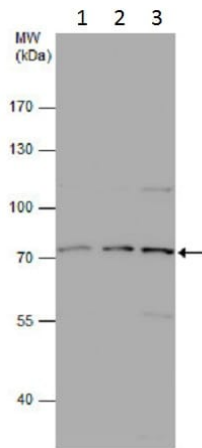
Function	Part of the insoluble cornified cell envelope (CE) of stratified squamous epithelia.
Tissue specificity	Keratinocytes of epidermis and other stratified squamous epithelia.
Sequence similarities	Belongs to the involucrin family.
Post-translational modifications	Substrate of transglutaminase. Some glutamines and lysines are cross-linked to other involucrin molecules, to other proteins such as keratin, desmoplakin, periplakin and envoplakin, and to lipids like omega-hydroxyceramide.
Cellular localization	Cytoplasm. Constituent of the scaffolding of the cornified envelope.

Images



Paraffin-embedded H661 xenograft stained for Involucrin with ab227530 (1/250 dilution) in immunohistochemical analysis.

Immunohistochemistry (Formalin/PFA-fixed paraffin-embedded sections) - Anti-Involucrin antibody - N-terminal (ab227530)



Western blot - Anti-Involucrin antibody - N-terminal (ab227530)

All lanes : Anti-Involucrin antibody - N-terminal (ab227530) at 1/1000 dilution

Lane 1 : Jurkat (human T cell leukemia cell line from peripheral blood) whole cell extracts

Lane 2 : Raji (human Burkitt's lymphoma cell line) whole cell extracts

Lane 3 : NCI-H929 (human bone marrow lymphoblast cell line) whole cell extracts

Lysates/proteins at 30 µg per lane.

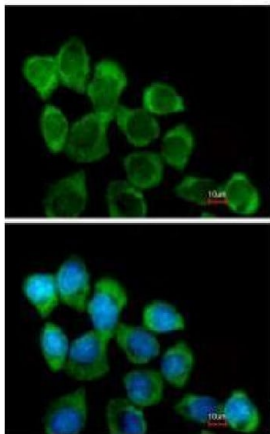
Secondary

All lanes : HRP-conjugated anti-rabbit IgG

Developed using the ECL technique.

Predicted band size: 68 kDa

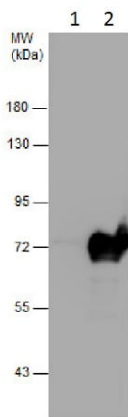
7.5% SDS-PAGE



Immunocytochemistry/ Immunofluorescence - Anti-Involucrin antibody - N-terminal (ab227530)

A431 (human epidermoid carcinoma cell line) cells stained for Involucrin (green) using ab227530 (1/200 dilution) in ICC/IF. Cells were fixed in methanol.

Counterstain: Hoechst 33342 (blue).



Western blot - Anti-Involucrin antibody - N-terminal (ab227530)

All lanes : Anti-Involucrin antibody - N-terminal (ab227530) at 1/1000 dilution

Lane 1 : Non-transfected HEK-293T (human epithelial cell line from embryonic kidney transformed with large T antigen) whole cell extracts

Lane 2 : Involucrin-transfected HEK-293T (human epithelial cell line from embryonic kidney transformed with large T antigen) whole cell extracts

Lysates/proteins at 30 µg per lane.

Secondary

All lanes : HRP-conjugated anti-rabbit IgG

Developed using the ECL technique.

Predicted band size: 68 kDa

7.5% SDS-PAGE

Please note: All products are "FOR RESEARCH USE ONLY. NOT FOR USE IN DIAGNOSTIC PROCEDURES"

Our Abpromise to you: Quality guaranteed and expert technical support

- Replacement or refund for products not performing as stated on the datasheet
- Valid for 12 months from date of delivery
- Response to your inquiry within 24 hours
- We provide support in Chinese, English, French, German, Japanese and Spanish
- Extensive multi-media technical resources to help you
- We investigate all quality concerns to ensure our products perform to the highest standards

If the product does not perform as described on this datasheet, we will offer a refund or replacement. For full details of the Abpromise, please visit <https://www.abcam.com/abpromise> or contact our technical team.

Terms and conditions

- Guarantee only valid for products bought direct from Abcam or one of our authorized distributors