

## Product datasheet

### Anti-Involucrin antibody [rIVRN/827] ab270720

Recombinant

2 Images

#### Overview

<b>Product name</b>	Anti-Involucrin antibody [rIVRN/827]
<b>Description</b>	Mouse monoclonal [rIVRN/827] to Involucrin
<b>Host species</b>	Mouse
<b>Tested applications</b>	<b>Suitable for:</b> IHC-P
<b>Species reactivity</b>	<b>Reacts with:</b> Human
<b>Immunogen</b>	Recombinant full length protein corresponding to Human Involucrin. Database link: <a href="#">P07476</a>
<b>Positive control</b>	IHC-P: Human skin tissue.

#### Properties

<b>Form</b>	Liquid
<b>Storage instructions</b>	Shipped at 4°C. Store at +4°C short term (1-2 weeks). Upon delivery aliquot. Store at -20°C. Avoid freeze / thaw cycle.
<b>Storage buffer</b>	pH: 7.2 Preservative: 0.05% Sodium azide Constituents: PBS, 0.05% BSA
<b>Purity</b>	Protein A/G purified
<b>Purification notes</b>	Ab Purified from Bioreactor Concentrate.
<b>Clonality</b>	Monoclonal
<b>Clone number</b>	rIVRN/827
<b>Isotype</b>	IgG1
<b>Light chain type</b>	kappa

#### Applications

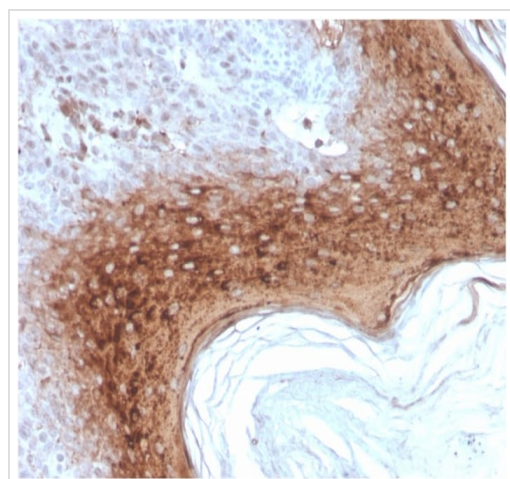
**The Abpromise guarantee** Our **Abpromise guarantee** covers the use of ab270720 in the following tested applications. The application notes include recommended starting dilutions; optimal dilutions/concentrations should be determined by the end user.

Application	Abreviews	Notes
IHC-P		Use at an assay dependent concentration.

## Target

<b>Function</b>	Part of the insoluble cornified cell envelope (CE) of stratified squamous epithelia.
<b>Tissue specificity</b>	Keratinocytes of epidermis and other stratified squamous epithelia.
<b>Sequence similarities</b>	Belongs to the involucrin family.
<b>Post-translational modifications</b>	Substrate of transglutaminase. Some glutamines and lysines are cross-linked to other involucrin molecules, to other proteins such as keratin, desmoplakin, periplakin and envoplakin, and to lipids like omega-hydroxyceramide.
<b>Cellular localization</b>	Cytoplasm. Constituent of the scaffolding of the cornified envelope.

## Images



Formalin-fixed, paraffin-embedded human skin stained for Involucrin using ab270720 at 0.2 µg/ml in immunohistochemical analysis.

Immunohistochemistry (Formalin/PFA-fixed paraffin-embedded sections) - Anti-Involucrin antibody [rIVRN/827] (ab270720)

### Why choose a recombinant antibody?



**Research with confidence**  
Consistent and reproducible results



**Long-term and scalable supply**  
Recombinant technology



**Success from the first experiment**  
Confirmed specificity



**Ethical standards compliant**  
Animal-free production

Anti-Involucrin antibody [rIVRN/827] (ab270720)

**Please note:** All products are "FOR RESEARCH USE ONLY. NOT FOR USE IN DIAGNOSTIC PROCEDURES"

### Our Abpromise to you: Quality guaranteed and expert technical support

---

- Replacement or refund for products not performing as stated on the datasheet
- Valid for 12 months from date of delivery
- Response to your inquiry within 24 hours
- We provide support in Chinese, English, French, German, Japanese and Spanish
- Extensive multi-media technical resources to help you
- We investigate all quality concerns to ensure our products perform to the highest standards

If the product does not perform as described on this datasheet, we will offer a refund or replacement. For full details of the Abpromise, please visit <https://www.abcam.com/abpromise> or contact our technical team.

### Terms and conditions

---

- Guarantee only valid for products bought direct from Abcam or one of our authorized distributors