

Anti-IPO5 antibody ab187175

[1 References](#) [5 Images](#)

Overview

Product name	Anti-IPO5 antibody
Description	Rabbit polyclonal to IPO5
Host species	Rabbit
Tested applications	Suitable for: ICC/IF, WB, IHC-P
Species reactivity	Reacts with: Mouse, Rat, Human
Immunogen	Recombinant fragment corresponding to Human IPO5 aa 20-300. Database link: O00410
Positive control	SW620, Hela, 293T, HepG2, mouse skeletal muscle, mouse testis, mouse heart, mouse brain and mouse ovary extracts.
General notes	<p>The Life Science industry has been in the grips of a reproducibility crisis for a number of years. Abcam is leading the way in addressing this with our range of recombinant monoclonal antibodies and knockout edited cell lines for gold-standard validation. Please check that this product meets your needs before purchasing.</p> <p>If you have any questions, special requirements or concerns, please send us an inquiry and/or contact our Support team ahead of purchase. Recommended alternatives for this product can be found below, along with publications, customer reviews and Q&As</p>

Properties

Form	Liquid
Storage instructions	Shipped at 4°C. Store at +4°C short term (1-2 weeks). Upon delivery aliquot. Store at -20°C long term. Avoid freeze / thaw cycle.
Storage buffer	pH: 7.30 Constituents: 49% PBS, 50% Glycerol, 0.02% BSA
Purity	Immunogen affinity purified
Clonality	Polyclonal
Isotype	IgG

Applications

The Abpromise guarantee

Our **Abpromise guarantee** covers the use of ab187175 in the following tested applications.

The application notes include recommended starting dilutions; optimal dilutions/concentrations should be determined by the end user.

Application	Abreviews	Notes
ICC/IF		Use at an assay dependent concentration.
WB		1/500 - 1/2000. Predicted molecular weight: 124 kDa.
IHC-P		1/50 - 1/200. ab171870 - Rabbit polyclonal IgG, is suitable for use as an isotype control with this antibody.

Target

Function

Functions in nuclear protein import as nuclear transport receptor. Serves as receptor for nuclear localization signals (NLS) in cargo substrates. Is thought to mediate docking of the importin/substrate complex to the nuclear pore complex (NPC) through binding to nucleoporin and the complex is subsequently translocated through the pore by an energy requiring, Ran-dependent mechanism. At the nucleoplasmic side of the NPC, Ran binds to the importin, the importin/substrate complex dissociates and importin is re-exported from the nucleus to the cytoplasm where GTP hydrolysis releases Ran. The directionality of nuclear import is thought to be conferred by an asymmetric distribution of the GTP- and GDP-bound forms of Ran between the cytoplasm and nucleus (By similarity). Mediates the nuclear import of ribosomal proteins RPL23A, RPS7 and RPL5. Binds to a beta-like import receptor binding (BIB) domain of RPL23A. In vitro, mediates nuclear import of H2A, H2B, H3 and H4 histones. In case of HIV-1 infection, binds and mediates the nuclear import of HIV-1 Rev.

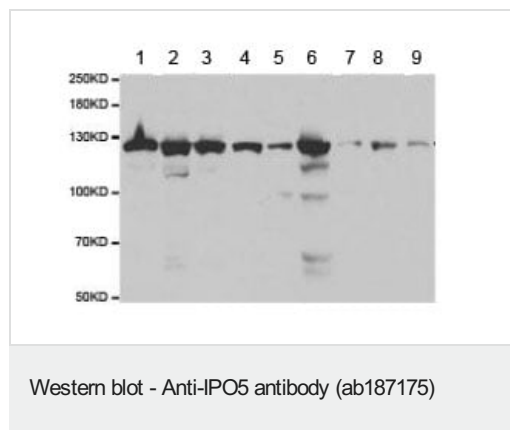
Sequence similarities

Belongs to the importin beta family.
Contains 6 HEAT repeats.
Contains 1 importin N-terminal domain.

Cellular localization

Cytoplasm. Nucleus. Nucleus > nucleolus. Nucleus; nuclear rim. Found particularly in the nuclear rim and nucleolus.

Images



All lanes : Anti-IPO5 antibody (ab187175) at 1/500 dilution

Lane 1 : SW620 cell extract

Lane 2 : Hela cell extract

Lane 3 : 293T cell extract

Lane 4 : HepG2 cell extract

Lane 5 : Mouse skeletal muscle extract

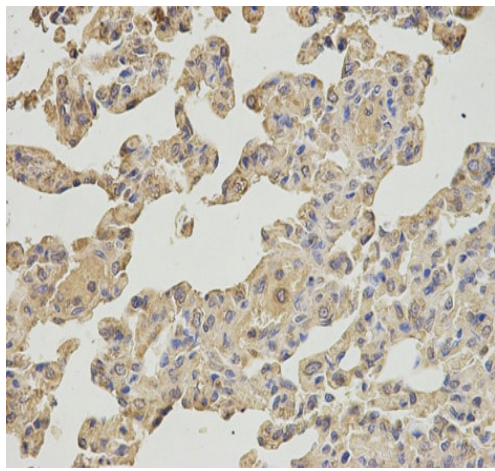
Lane 6 : Mouse testis extract

Lane 7 : Mouse heart extract

Lane 8 : Mouse brain extract

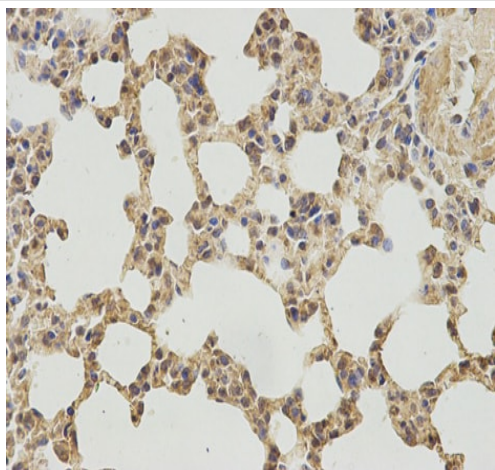
Lane 9 : Mouse ovary extract

Predicted band size: 124 kDa



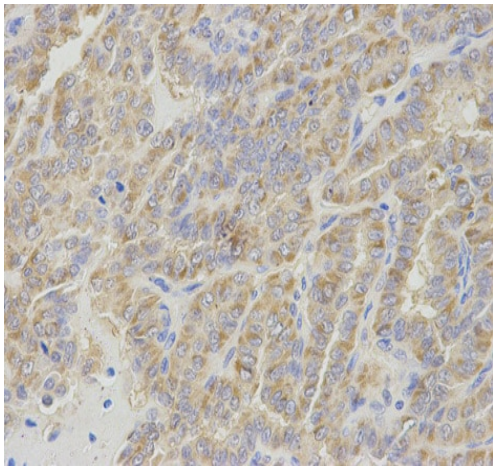
Immunohistochemistry (Formalin/PFA-fixed paraffin-embedded sections) analysis of rat lung tissue labelling Karyopherin beta 3 with ab187175 at 1/200. Magnification: 400x.

Immunohistochemistry (Formalin/PFA-fixed paraffin-embedded sections) - Anti-IPO5 antibody (ab187175)



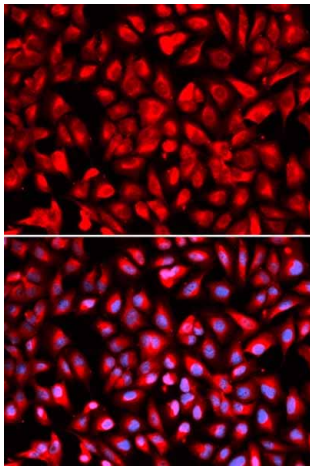
Immunohistochemistry (Formalin/PFA-fixed paraffin-embedded sections) analysis of mouse lung tissue labelling Karyopherin beta 3 with ab187175 at 1/200. Magnification: 400x.

Immunohistochemistry (Formalin/PFA-fixed paraffin-embedded sections) - Anti-IPO5 antibody (ab187175)



Immunohistochemistry (Formalin/PFA-fixed paraffin-embedded sections) analysis of human thyroid cancer tissue labelling Karyopherin beta 3 with ab187175 at 1/200. Magnification: 400x.

Immunohistochemistry (Formalin/PFA-fixed paraffin-embedded sections) - Anti-IPO5 antibody (ab187175)



Immunocytochemistry/Immunofluorescence analysis of U2OS cells using ab187175. Blue DAPI for nuclear staining.

Immunocytochemistry/ Immunofluorescence - Anti-IPO5 antibody (ab187175)

Please note: All products are "FOR RESEARCH USE ONLY. NOT FOR USE IN DIAGNOSTIC PROCEDURES"

Our Abpromise to you: Quality guaranteed and expert technical support

- Replacement or refund for products not performing as stated on the datasheet
- Valid for 12 months from date of delivery
- Response to your inquiry within 24 hours
- We provide support in Chinese, English, French, German, Japanese and Spanish
- Extensive multi-media technical resources to help you
- We investigate all quality concerns to ensure our products perform to the highest standards

If the product does not perform as described on this datasheet, we will offer a refund or replacement. For full details of the Abpromise, please visit <https://www.abcam.com/abpromise> or contact our technical team.

Terms and conditions

- Guarantee only valid for products bought direct from Abcam or one of our authorized distributors