


Product datasheet

Anti-IPS1 antibody ab240581

[2 Images](#)

Overview

| | |
|----------------------------|---|
| Product name | Anti-IPS1 antibody |
| Description | Rabbit polyclonal to IPS1 |
| Host species | Rabbit |
| Tested applications | Suitable for: WB, IP |
| Species reactivity | Reacts with: Human Predicted to work with: Cow, Orangutan  |
| Immunogen | Synthetic peptide within Human IPS1 aa 1383-1433. The exact sequence is proprietary. (GeneID 9677). Database link: Q6PFW1 |
| Positive control | WB: HeLa, HEK-293T and Jurkat cell lysate. IP: HEK-293T cell lysate. |
| General notes | <p>The Life Science industry has been in the grips of a reproducibility crisis for a number of years. Abcam is leading the way in addressing this with our range of recombinant monoclonal antibodies and knockout edited cell lines for gold-standard validation. Please check that this product meets your needs before purchasing.</p> <p>If you have any questions, special requirements or concerns, please send us an inquiry and/or contact our Support team ahead of purchase. Recommended alternatives for this product can be found below, along with publications, customer reviews and Q&As</p> |

Properties

| | |
|-----------------------------|---|
| Form | Liquid |
| Storage instructions | Shipped at 4°C. Store at +4°C short term (1-2 weeks). Upon delivery aliquot. Store at -20°C long term. Avoid freeze / thaw cycle. |
| Storage buffer | pH: 7 Preservative: 0.09% Sodium azide Constituent: Tris citrate/phosphate |
| Purity | Affinity purified |
| Clonality | Polyclonal |
| Isotype | IgG |

Applications

The Abpromise guarantee

Our **Abpromise guarantee** covers the use of ab240581 in the following tested applications.

The application notes include recommended starting dilutions; optimal dilutions/concentrations should be determined by the end user.

| Application | Abreviews | Notes |
|-------------|-----------|------------------------------|
| WB | | 1/2000 - 1/10000. |
| IP | | Use at 2-10 µg/mg of lysate. |

Target

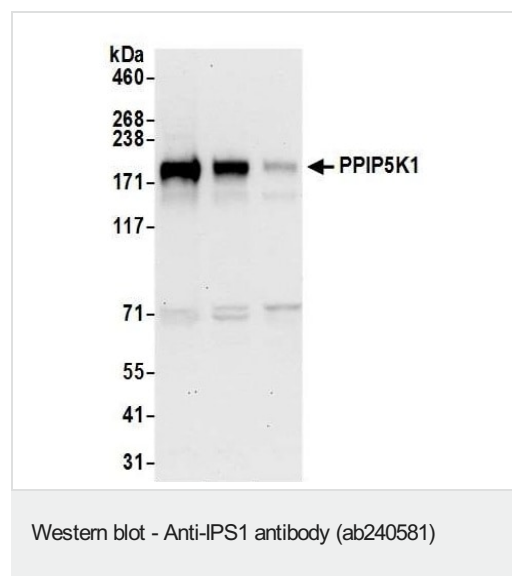
Relevance

Bifunctional inositol kinase that catalyzes the formation of diphosphoinositol pentakisphosphate (InsP7 or PP-InsP5) and bi-diphosphoinositol tetrakisphosphate (InsP8 or PP2-InsP4). Converts inositolitol hexakisphosphate (InsP6) to InsP7. Also able to convert InsP7 to InsP8. Probably specifically mediates the formation of 4PP-InsP5 and 6PP-InsP5 InsP7 isomers but not of 5PP-IP5 InsP7 isomer. Activated when cells are exposed to hyperosmotic stress.

Cellular localization

Cytoplasm, cytosol and Plasma membrane

Images



All lanes : Anti-IPS1 antibody (ab240581) at 1 µg/ml

Lane 1 : HeLa (human epithelial cell line from cervix adenocarcinoma) cell lysate

Lane 2 : HEK-293T (human epithelial cell line from embryonic kidney transformed with large T antigen) cell lysate

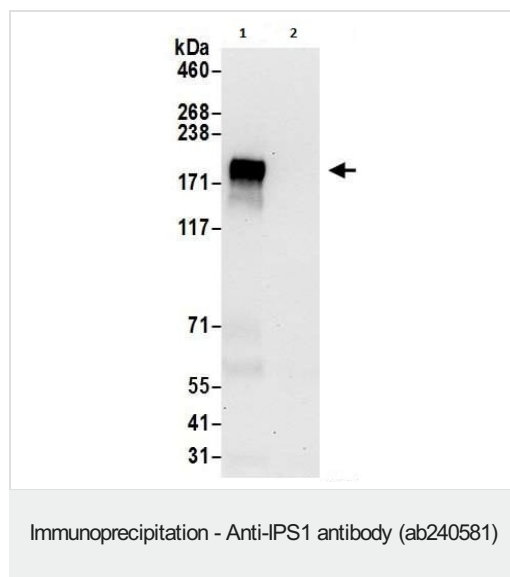
Lane 3 : Jurkat (human T cell leukemia cell line from peripheral blood) cell lysate

Lysates/proteins at 50 µg per lane.

Developed using the ECL technique.

Exposure time: 30 seconds

Detection: Chemiluminescence with an exposure time of 30 seconds.



IPS1 was immunoprecipitated from HEK-293T (human epithelial cell line from embryonic kidney transformed with large T antigen) whole cell lysate (1.0 mg per IP reaction; 20% of IP loaded) prepared using NETN lysis buffer, using ab240581 at 6 µg per reaction. For western blotting, ab240581 was used at 0.4 µg/ml.

Lane 1: ab240581 used for IP at 6 µg per reaction.

Lane 2: Control IgG.

Detection: Chemiluminescence with an exposure time of 30 seconds.

Please note: All products are "FOR RESEARCH USE ONLY. NOT FOR USE IN DIAGNOSTIC PROCEDURES"

Our Abpromise to you: Quality guaranteed and expert technical support

- Replacement or refund for products not performing as stated on the datasheet
- Valid for 12 months from date of delivery
- Response to your inquiry within 24 hours
- We provide support in Chinese, English, French, German, Japanese and Spanish
- Extensive multi-media technical resources to help you
- We investigate all quality concerns to ensure our products perform to the highest standards

If the product does not perform as described on this datasheet, we will offer a refund or replacement. For full details of the Abpromise, please visit <https://www.abcam.com/abpromise> or contact our technical team.

Terms and conditions

- Guarantee only valid for products bought direct from Abcam or one of our authorized distributors