

## Product datasheet

### Anti-IRBIT antibody ab238488

2 Images

#### Overview

<b>Product name</b>	Anti-IRBIT antibody
<b>Description</b>	Rabbit polyclonal to IRBIT
<b>Host species</b>	Rabbit
<b>Tested applications</b>	<b>Suitable for:</b> IHC-P
<b>Species reactivity</b>	<b>Reacts with:</b> Human
<b>Immunogen</b>	Recombinant fragment corresponding to Human IRBIT aa 31-260. Database link: <a href="#">O43865</a>
<b>Positive control</b>	IHC-P: Human breast cancer and kidney tissues.
<b>General notes</b>	<p>The Life Science industry has been in the grips of a reproducibility crisis for a number of years. Abcam is leading the way in addressing this with our range of recombinant monoclonal antibodies and knockout edited cell lines for gold-standard validation. Please check that this product meets your needs before purchasing.</p> <p>If you have any questions, special requirements or concerns, please send us an inquiry and/or contact our Support team ahead of purchase. Recommended alternatives for this product can be found below, along with publications, customer reviews and Q&amp;As</p>

#### Properties

<b>Form</b>	Liquid
<b>Storage instructions</b>	Shipped at 4°C. Store at +4°C short term (1-2 weeks). Upon delivery aliquot. Store at -20°C long term. Avoid freeze / thaw cycle.
<b>Storage buffer</b>	pH: 7.30 Preservative: 0.02% Sodium azide Constituents: PBS, 50% Glycerol (glycerin, glycerine)
<b>Purity</b>	Immunogen affinity purified
<b>Clonality</b>	Polyclonal
<b>Isotype</b>	IgG

#### Applications

## The Abpromise guarantee

Our **Abpromise guarantee** covers the use of ab238488 in the following tested applications.

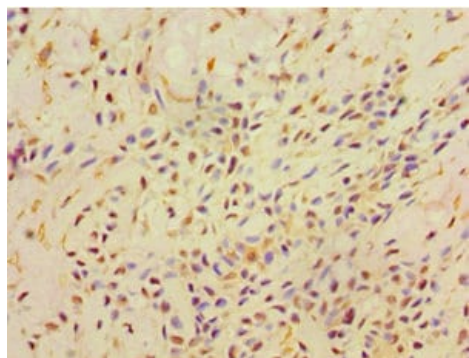
The application notes include recommended starting dilutions; optimal dilutions/concentrations should be determined by the end user.

Application	Abreviews	Notes
IHC-P		1/20 - 1/200.

## Target

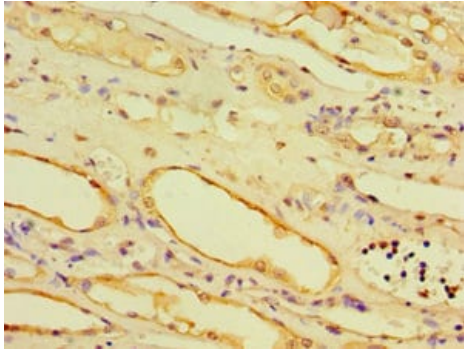
<b>Tissue specificity</b>	Expressed in dendritic cells.
<b>Pathway</b>	Amino-acid biosynthesis; L-homocysteine biosynthesis; L-homocysteine from S-adenosyl-L-homocysteine: step 1/1.
<b>Sequence similarities</b>	Belongs to the adenosylhomocysteinase family.
<b>Developmental stage</b>	Expression increases markedly during activation of blood and skin DC (Langerhans cells), but is diminished in terminally differentiated tonsil DC.
<b>Domain</b>	The PEST region is essential for the interaction with ITPR1. The PDZ-binding region is required for maximal interaction with ITPR1 and is also responsible for the IP3-insensitive interaction with ITPR1.
<b>Cellular localization</b>	Endoplasmic reticulum.

## Images



Paraffin-embedded human breast cancer tissue stained for IRBIT using ab238488 at 1/100 dilution in immunohistochemical analysis.

Immunohistochemistry (Formalin/PFA-fixed paraffin-embedded sections) - Anti-IRBIT antibody (ab238488)



Paraffin-embedded human kidney tissue stained for IRBIT using ab238488 at 1/100 dilution in immunohistochemical analysis.

Immunohistochemistry (Formalin/PFA-fixed paraffin-embedded sections) - Anti-IRBIT antibody (ab238488)

**Please note:** All products are "FOR RESEARCH USE ONLY. NOT FOR USE IN DIAGNOSTIC PROCEDURES"

### Our Abpromise to you: Quality guaranteed and expert technical support

---

- Replacement or refund for products not performing as stated on the datasheet
- Valid for 12 months from date of delivery
- Response to your inquiry within 24 hours
- We provide support in Chinese, English, French, German, Japanese and Spanish
- Extensive multi-media technical resources to help you
- We investigate all quality concerns to ensure our products perform to the highest standards

If the product does not perform as described on this datasheet, we will offer a refund or replacement. For full details of the Abpromise, please visit <https://www.abcam.com/abpromise> or contact our technical team.

### Terms and conditions

---

- Guarantee only valid for products bought direct from Abcam or one of our authorized distributors