

Product datasheet

Anti-IRE1 antibody ab37117

[3 References](#) [2 Images](#)

Overview

Product name	Anti-IRE1 antibody
Description	Rabbit polyclonal to IRE1
Host species	Rabbit
Tested applications	Suitable for: ICC/IF, WB
Species reactivity	Reacts with: Mouse
Immunogen	Synthetic peptide corresponding to 15 amino acids near the N terminus of the human IRE1 protein.
Positive control	A20 cell lysate.
General notes	<p>The Life Science industry has been in the grips of a reproducibility crisis for a number of years. Abcam is leading the way in addressing this with our range of recombinant monoclonal antibodies and knockout edited cell lines for gold-standard validation. Please check that this product meets your needs before purchasing.</p> <p>If you have any questions, special requirements or concerns, please send us an inquiry and/or contact our Support team ahead of purchase. Recommended alternatives for this product can be found below, along with publications, customer reviews and Q&As</p>

Properties

Form	Liquid
Storage instructions	Shipped at 4°C. Store at +4°C.
Storage buffer	pH: 7.2 Preservative: 0.02% Sodium azide Constituent: PBS
Purity	Immunogen affinity purified
Clonality	Polyclonal
Isotype	IgG

Applications

The Abpromise guarantee Our **Abpromise guarantee** covers the use of ab37117 in the following tested applications.

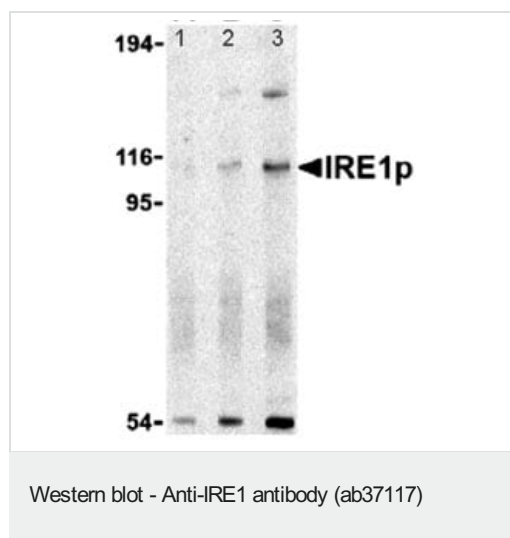
The application notes include recommended starting dilutions; optimal dilutions/concentrations should be determined by the end user.

Application	Abreviews	Notes
ICC/IF		Use a concentration of 1 µg/ml.
WB		Use a concentration of 0.5 - 2 µg/ml. Detects a band of approximately 107 kDa (predicted molecular weight: 110 kDa).

Target

Function	Senses unfolded proteins in the lumen of the endoplasmic reticulum via its N-terminal domain which leads to enzyme auto-activation. The active endoribonuclease domain splices XBP1 mRNA to generate a new C-terminus, converting it into a potent unfolded-protein response transcriptional activator and triggering growth arrest and apoptosis.
Tissue specificity	Ubiquitously expressed. High levels observed in pancreatic tissue.
Sequence similarities	Belongs to the protein kinase superfamily. Ser/Thr protein kinase family. Contains 1 KEN domain. Contains 1 protein kinase domain.
Post-translational modifications	Autophosphorylated.
Cellular localization	Endoplasmic reticulum membrane.

Images



All lanes : Anti-IRE1 antibody (ab37117)

Lane 1 : ab37117 at 0.5µg/ml + A20 cell lysate

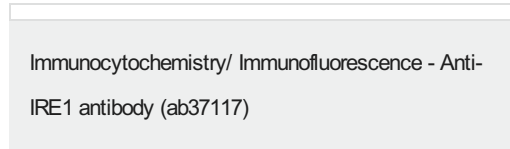
Lane 2 : ab37117 at 1µg/ml + A20 Cell lysate

Lane 3 : ab37117 at 2µg/ml + A20 cell lysate

Predicted band size: 110 kDa

Observed band size: 107 kDa

Additional bands at: 150 kDa, 55 kDa. We are unsure as to the identity of these extra bands.



Immunofluorescence of IRE1p in A20 cells using ab37117 at 10 µg/ml.

Please note: All products are "FOR RESEARCH USE ONLY. NOT FOR USE IN DIAGNOSTIC PROCEDURES"

Our Abpromise to you: Quality guaranteed and expert technical support

- Replacement or refund for products not performing as stated on the datasheet
- Valid for 12 months from date of delivery
- Response to your inquiry within 24 hours

- We provide support in Chinese, English, French, German, Japanese and Spanish
- Extensive multi-media technical resources to help you
- We investigate all quality concerns to ensure our products perform to the highest standards

If the product does not perform as described on this datasheet, we will offer a refund or replacement. For full details of the Abpromise, please visit <https://www.abcam.com/abpromise> or contact our technical team.

Terms and conditions

- Guarantee only valid for products bought direct from Abcam or one of our authorized distributors