




Product datasheet

Anti-IRF1 antibody ab233087

[2 Images](#)

Overview

Product name	Anti-IRF1 antibody
Description	Rabbit polyclonal to IRF1
Host species	Rabbit
Tested applications	Suitable for: WB
Species reactivity	Reacts with: Rat, Human Predicted to work with: Pig 
Immunogen	Recombinant fragment (His-tag) corresponding to Human IRF1 aa 1-300. Expressed in E.coli. N-terminal tags. Database link: P10914  Run BLAST with  Run BLAST with
Positive control	WB: Rat heart and placenta lysates; Recombinant human IRF1 protein.
General notes	<p>The Life Science industry has been in the grips of a reproducibility crisis for a number of years. Abcam is leading the way in addressing this with our range of recombinant monoclonal antibodies and knockout edited cell lines for gold-standard validation. Please check that this product meets your needs before purchasing.</p> <p>If you have any questions, special requirements or concerns, please send us an inquiry and/or contact our Support team ahead of purchase. Recommended alternatives for this product can be found below, along with publications, customer reviews and Q&As</p>

Properties

Form	Liquid
Storage instructions	Shipped at 4°C. Store at +4°C short term (1-2 weeks). Upon delivery aliquot. Store at -20°C long term. Avoid freeze / thaw cycle.
Storage buffer	pH: 7.40 Preservative: 0.02% Sodium azide Constituents: 44.12% PBS, 55.77% Glycerol (glycerin, glycerine)
Purity	Immunogen affinity purified
Purification notes	ab233087 was purified by antigen-specific affinity chromatography followed by Protein A affinity chromatography.
Clonality	Polyclonal

Isotype

IgG

Applications

The Abpromise guarantee

Our **Abpromise guarantee** covers the use of ab233087 in the following tested applications.

The application notes include recommended starting dilutions; optimal dilutions/concentrations should be determined by the end user.

Application	Abreviews	Notes
WB		Use a concentration of 1 - 5 µg/ml. Predicted molecular weight: 36 kDa.

Target

Function

Specifically binds to the upstream regulatory region of type I IFN and IFN-inducible MHC class I genes (the interferon consensus sequence (ICS)) and activates those genes. Acts as a tumor suppressor.

Involvement in disease

Defects in IRF1 are a cause of gastric cancer (GASC) [MIM:613659]; also called gastric cancer intestinal or stomach cancer. Gastric cancer is a malignant disease which starts in the stomach, can spread to the esophagus or the small intestine, and can extend through the stomach wall to nearby lymph nodes and organs. It also can metastasize to other parts of the body. The term gastric cancer or gastric carcinoma refers to adenocarcinoma of the stomach that accounts for most of all gastric malignant tumors. Two main histologic types are recognized, diffuse type and intestinal type carcinomas. Diffuse tumors are poorly differentiated infiltrating lesions, resulting in thickening of the stomach. In contrast, intestinal tumors are usually exophytic, often ulcerating, and associated with intestinal metaplasia of the stomach, most often observed in sporadic disease.

Sequence similarities

Belongs to the IRF family.

Contains 1 IRF tryptophan pentad repeat DNA-binding domain.

Post-translational modifications

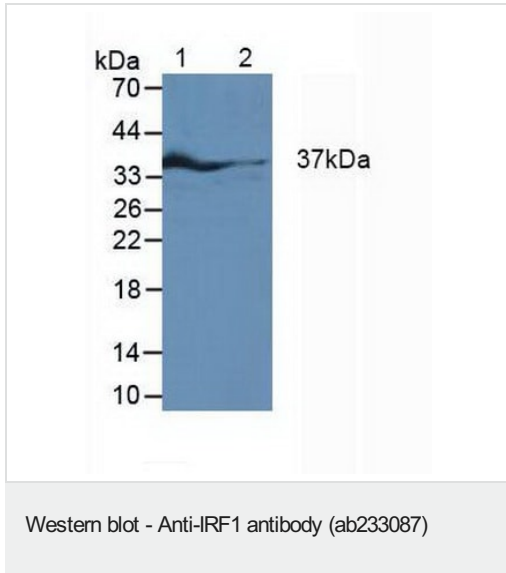
Sumoylation represses the transcriptional activity and displays enhanced resistance to protein degradation. Inactivates the tumor suppressor activity. Elevated levels in tumor cells. Major site is Lys-275. Sumoylation is enhanced by PIAS3 (By similarity). Desumoylated by SENP1 in tumor cells and appears to compete with ubiquitination on C-terminal sites.

Ubiquitinated. Appears to compete with sumoylation on C-terminal sites.

Cellular localization

Nucleus.

Images



All lanes : Anti-IRF1 antibody (ab233087) at 2 µg/ml

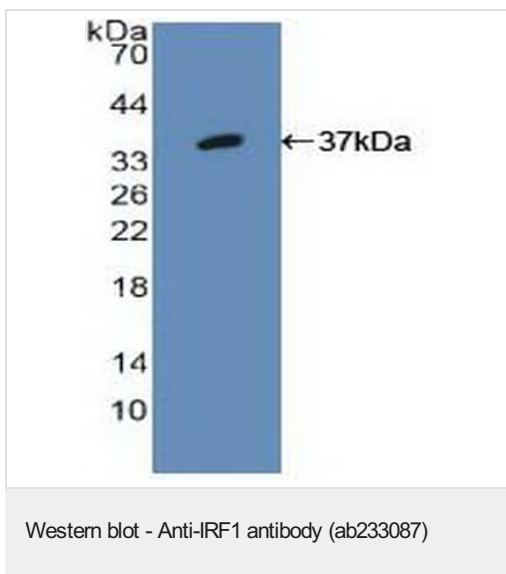
Lane 1 : Rat heart lysate

Lane 2 : Rat placenta lysate

Secondary

All lanes : HRP-Linked Guinea pig Anti-Rabbit at 1/2000 dilution

Predicted band size: 36 kDa



Anti-IRF1 antibody (ab233087) at 2 µg/ml + Recombinant human IRF1 protein

Predicted band size: 36 kDa

Please note: All products are "FOR RESEARCH USE ONLY. NOT FOR USE IN DIAGNOSTIC PROCEDURES"

Our Abpromise to you: Quality guaranteed and expert technical support

- Replacement or refund for products not performing as stated on the datasheet
- Valid for 12 months from date of delivery
- Response to your inquiry within 24 hours

- We provide support in Chinese, English, French, German, Japanese and Spanish
- Extensive multi-media technical resources to help you
- We investigate all quality concerns to ensure our products perform to the highest standards

If the product does not perform as described on this datasheet, we will offer a refund or replacement. For full details of the Abpromise, please visit <https://www.abcam.com/abpromise> or contact our technical team.

Terms and conditions

- Guarantee only valid for products bought direct from Abcam or one of our authorized distributors