




Product datasheet

Anti-IRF8 antibody ab168808

1 Image

Overview

| | |
|----------------------------|---|
| Product name | Anti-IRF8 antibody |
| Description | Rabbit polyclonal to IRF8 |
| Host species | Rabbit |
| Tested applications | Suitable for: IP |
| Species reactivity | Reacts with: Mouse Predicted to work with: Rat, Rabbit, Chicken, Guinea pig, Cow, Dog, Turkey, Human, Pig, Chimpanzee, Duck, Lizard, Rhesus monkey, Gorilla, Chinese hamster, Orangutan  |
| Immunogen | Synthetic peptide corresponding to Mouse IRF8 aa 1-100. Database link: P23611 <div>  Run BLAST with  Run BLAST with </div> |
| Positive control | RAW 264.7 whole cell lysate. |
| General notes | <p>The Life Science industry has been in the grips of a reproducibility crisis for a number of years. Abcam is leading the way in addressing this with our range of recombinant monoclonal antibodies and knockout edited cell lines for gold-standard validation. Please check that this product meets your needs before purchasing.</p> <p>If you have any questions, special requirements or concerns, please send us an inquiry and/or contact our Support team ahead of purchase. Recommended alternatives for this product can be found below, along with publications, customer reviews and Q&As</p> |

Properties

| | |
|-----------------------------|--|
| Form | Liquid |
| Storage instructions | Shipped at 4°C. Store at +4°C short term (1-2 weeks). Upon delivery aliquot. Store at -20°C long term. |
| Storage buffer | pH: 7 Preservative: 0.09% Sodium azide Constituent: 99% Tris citrate/phosphate pH 7 to 8 |
| Purity | Immunogen affinity purified |
| Purification notes | ab168808 was affinity purified using an epitope specific to IRF8 immobilized on solid support. |

| | |
|------------------|------------|
| Clonality | Polyclonal |
| Isotype | IgG |

Applications

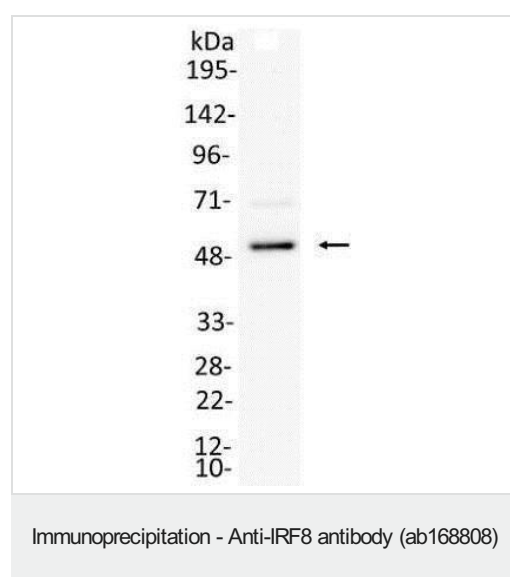
The Abpromise guarantee Our **Abpromise guarantee** covers the use of ab168808 in the following tested applications. The application notes include recommended starting dilutions; optimal dilutions/concentrations should be determined by the end user.

| Application | Abreviews | Notes |
|-------------|-----------|------------------------------|
| IP | | Use at 2-10 µg/mg of lysate. |

Target

| | |
|---|---|
| Function | Specifically binds to the upstream regulatory region of type I IFN and IFN-inducible MHC class I genes (the interferon consensus sequence (ICS)). Plays a negative regulatory role in cells of the immune system. |
| Tissue specificity | Predominantly in lymphoid tissues. |
| Sequence similarities | Belongs to the IRF family. Contains 1 IRF tryptophan pentad repeat DNA-binding domain. |
| Post-translational modifications | Ubiquitinated. Ubiquitination by TRIM21 in macrophages, a process that is strongly increased upon interferon gamma stimulation, leads to the enhanced transcriptional activity of target cytokine genes. |
| Cellular localization | Nucleus. |

Images



Detection of IRF8 in Immunoprecipitates of RAW 264.7 whole cell lysate (0.5 mg for IP, 20% of IP loaded) using ab168808 at 6 µg/mg lysate for IP. For WB detection an alternative anti-IRF8 antibody was used at 1 µg/ml.

Detection: Chemiluminescence with an exposure time of 30 seconds.

Predicted MWt: 48 kDa.

Please note: All products are "FOR RESEARCH USE ONLY. NOT FOR USE IN DIAGNOSTIC PROCEDURES"

Our Abpromise to you: Quality guaranteed and expert technical support

- Replacement or refund for products not performing as stated on the datasheet
- Valid for 12 months from date of delivery
- Response to your inquiry within 24 hours

- We provide support in Chinese, English, French, German, Japanese and Spanish
- Extensive multi-media technical resources to help you
- We investigate all quality concerns to ensure our products perform to the highest standards

If the product does not perform as described on this datasheet, we will offer a refund or replacement. For full details of the Abpromise, please visit [**https://www.abcam.com/abpromise**](https://www.abcam.com/abpromise) or contact our technical team.

Terms and conditions

- Guarantee only valid for products bought direct from Abcam or one of our authorized distributors