


Product datasheet

Anti-IRS1 (phospho S1101) + IRS2 (phospho S1149) antibody [EPR2350(2)] α b178703

Recombinant RabMAb

2 Images

Overview

Product name	Anti-IRS1 (phospho S1101) + IRS2 (phospho S1149) antibody [EPR2350(2)]
Description	Rabbit monoclonal [EPR2350(2)] to IRS1 (phospho S1101) + IRS2 (phospho S1149)
Host species	Rabbit
Specificity	ab178703 only detects IRS1 phosphorylated at Serine 1101 and IRS2 phosphorylated at Serine 1149.
Tested applications	Suitable for: WB Unsuitable for: Flow Cyt, ICC/IF, IHC-P or IP
Species reactivity	Reacts with: Human Predicted to work with: Mouse, Rat 
Immunogen	Synthetic peptide. This information is proprietary to Abcam and/or its suppliers.
Positive control	293T cell lysate treated with insulin.
General notes	<p>This product is a recombinant monoclonal antibody, which offers several advantages including:</p> <ul style="list-style-type: none"> - High batch-to-batch consistency and reproducibility - Improved sensitivity and specificity - Long-term security of supply - Animal-free production <p>For more information see here.</p> <p>Our RabMAb[®] technology is a patented hybridoma-based technology for making rabbit monoclonal antibodies. For details on our patents, please refer to RabMAb[®] patents.</p>

Properties

Form	Liquid
Storage instructions	Shipped at 4°C. Store at +4°C short term (1-2 weeks). Upon delivery aliquot. Store at -20°C long term. Avoid freeze / thaw cycle.
Storage buffer	pH: 7.20 Preservative: 0.01% Sodium azide Constituents: 9% PBS, 40% Glycerol (glycerin, glycerine), 0.05% BSA, 50% Tissue culture

	supernatant
Purity	Tissue culture supernatant
Clonality	Monoclonal
Clone number	EPR2350(2)
Isotype	IgG

Applications

The Abpromise guarantee Our **Abpromise guarantee** covers the use of ab178703 in the following tested applications. The application notes include recommended starting dilutions; optimal dilutions/concentrations should be determined by the end user.

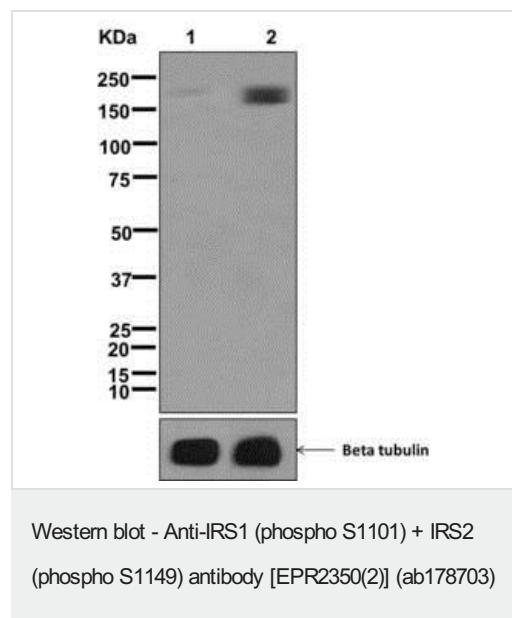
Application	Abreviews	Notes
WB		1/1000 - 1/10000. Predicted molecular weight: 131 kDa.

Application notes Is unsuitable for Flow Cyt, ICC/IF, IHC-P or IP.

Target

Cellular localization IRS2: Cytoplasm > cytosol.

Images



All lanes : Anti-IRS1 (phospho S1101) + IRS2 (phospho S1149) antibody [EPR2350(2)] (ab178703) at 1/1000 dilution

Lane 1 : 293T cell lysate untreated

Lane 2 : 293T cell lysate treated with insulin

Lysates/proteins at 10 µg per lane.

Predicted band size: 131 kDa

Why choose a recombinant antibody?



Research with confidence
Consistent and reproducible results



Long-term and scalable supply
Recombinant technology



Success from the first experiment
Confirmed specificity



Ethical standards compliant
Animal-free production

Anti-IRS1 (phospho S1101) + IRS2 (phospho S1149)
antibody [EPR2350(2)] (ab178703)

Please note: All products are "FOR RESEARCH USE ONLY. NOT FOR USE IN DIAGNOSTIC PROCEDURES"

Our Abpromise to you: Quality guaranteed and expert technical support

- Replacement or refund for products not performing as stated on the datasheet
- Valid for 12 months from date of delivery
- Response to your inquiry within 24 hours
- We provide support in Chinese, English, French, German, Japanese and Spanish
- Extensive multi-media technical resources to help you
- We investigate all quality concerns to ensure our products perform to the highest standards

If the product does not perform as described on this datasheet, we will offer a refund or replacement. For full details of the Abpromise, please visit <https://www.abcam.com/abpromise> or contact our technical team.

Terms and conditions

- Guarantee only valid for products bought direct from Abcam or one of our authorized distributors