




## Product datasheet

# Anti-ISLR antibody ab232986

[1 References](#) [5 Images](#)

### Overview

---

<b>Product name</b>	Anti-ISLR antibody
<b>Description</b>	Rabbit polyclonal to ISLR
<b>Host species</b>	Rabbit
<b>Tested applications</b>	<b>Suitable for:</b> IHC-P, WB
<b>Species reactivity</b>	<b>Reacts with:</b> Human <b>Predicted to work with:</b> Cow, Orangutan 
<b>Immunogen</b>	Recombinant full length protein corresponding to Human ISLR aa 1 to the C-terminus. Full length mature chain, expressed in E. coli. Database link: <a href="#">O14498</a>  <a href="#">Run BLAST with</a>  <a href="#">Run BLAST with</a>
<b>Positive control</b>	WB: Recombinant human ISLR protein. Human serum. IHC-P: Human stomach, prostate and kidney tissue.
<b>General notes</b>	<p>The Life Science industry has been in the grips of a reproducibility crisis for a number of years. Abcam is leading the way in addressing this with our range of recombinant monoclonal antibodies and knockout edited cell lines for gold-standard validation. Please check that this product meets your needs before purchasing.</p> <p>If you have any questions, special requirements or concerns, please send us an inquiry and/or contact our Support team ahead of purchase. Recommended alternatives for this product can be found below, along with publications, customer reviews and Q&amp;As</p>

### Properties

---

<b>Form</b>	Liquid
<b>Storage instructions</b>	Shipped at 4°C. Store at +4°C short term (1-2 weeks). Upon delivery aliquot. Store at -20°C long term. Avoid freeze / thaw cycle.
<b>Storage buffer</b>	pH: 7.40 Preservative: 0.011% Proclin 300 Constituents: 55.77% Glycerol (glycerin, glycerine), 44.219% PBS
<b>Purity</b>	Protein A purified
<b>Purification notes</b>	Antigen-specific affinity chromatography followed by Protein A affinity chromatography.
<b>Clonality</b>	Polyclonal

Isotype

IgG

## Applications

### The Abpromise guarantee

Our **Abpromise guarantee** covers the use of ab232986 in the following tested applications.

The application notes include recommended starting dilutions; optimal dilutions/concentrations should be determined by the end user.

Application	Abreviews	Notes
IHC-P		Use a concentration of 5 - 20 µg/ml.
WB		Use a concentration of 0.5 - 2 µg/ml. Predicted molecular weight: 46 kDa.

## Target

### Tissue specificity

Expressed in various tissues including retina, heart, skeletal muscle, prostate, ovary, small intestine, thyroid, adrenal cortex, testis, stomach and spinal cord.

### Sequence similarities

Contains 1 Ig-like (immunoglobulin-like) domain.

Contains 5 LRR (leucine-rich) repeats.

Contains 1 LRRCT domain.

Contains 1 LRRNT domain.

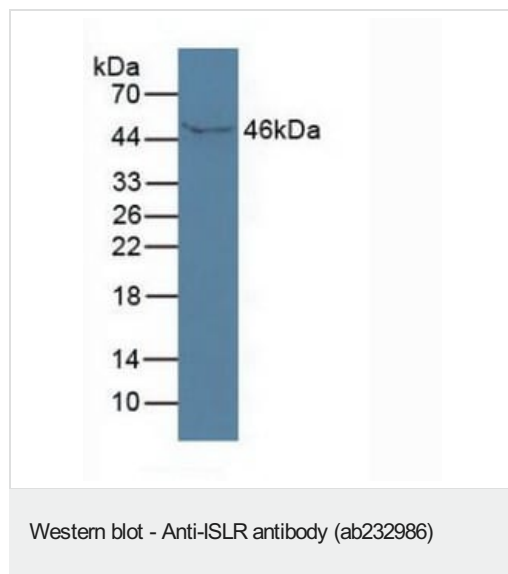
### Developmental stage

Expressed in fetal lung and kidney.

### Cellular localization

Secreted.

## Images

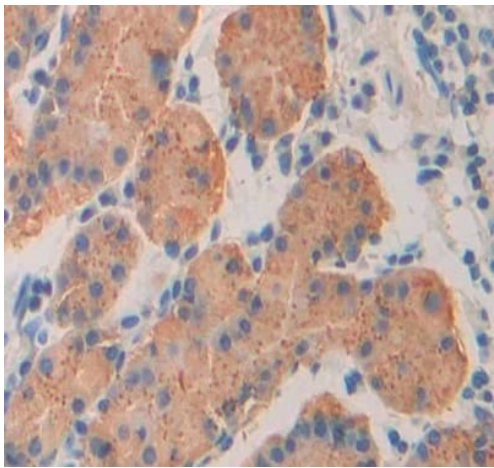


Anti-ISLR antibody (ab232986) at 2 µg/ml + Human serum

### Secondary

HRP-linked Guinea pig anti-Rabbit at 1/2000 dilution

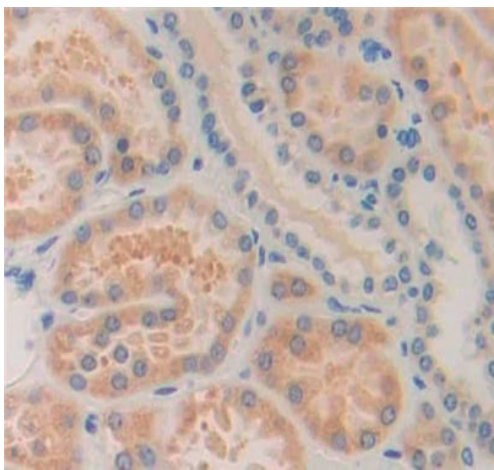
**Predicted band size:** 46 kDa



Immunohistochemistry (Formalin/PFA-fixed paraffin-embedded sections) - Anti-ISLR antibody (ab232986)

Formalin-fixed, paraffin-embedded human stomach tissue stained for ISLR with ab232986 at 20  $\mu\text{g}/\text{ml}$  in immunohistochemical analysis.

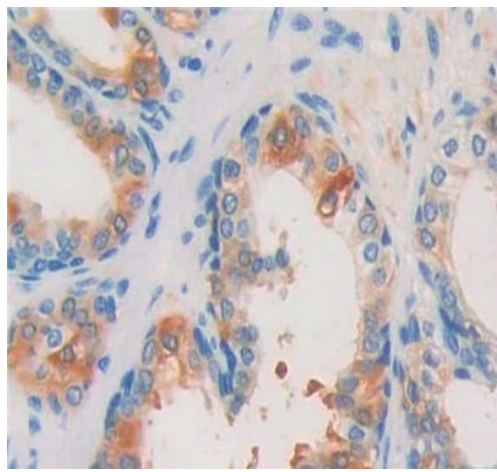
Secondary used: HRP-Linked Goat anti-Rabbit IgG polyclonal at 2  $\mu\text{g}/\text{ml}$ . DAB staining.



Immunohistochemistry (Formalin/PFA-fixed paraffin-embedded sections) - Anti-ISLR antibody (ab232986)

Formalin-fixed, paraffin-embedded human kidney tissue stained for ISLR with ab232986 at 20  $\mu\text{g}/\text{ml}$  in immunohistochemical analysis.

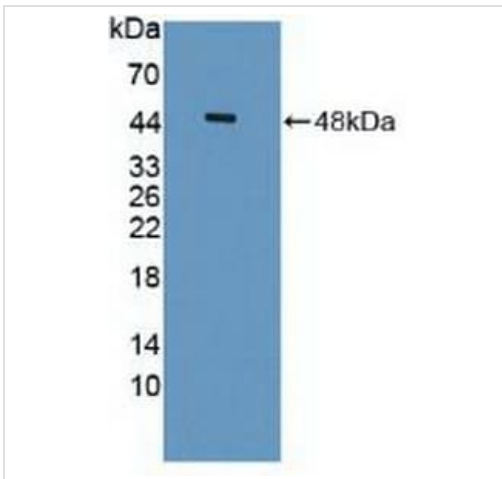
Secondary used: HRP-Linked Goat anti-Rabbit IgG polyclonal at 2  $\mu\text{g}/\text{ml}$ . DAB staining.



Immunohistochemistry (Formalin/PFA-fixed paraffin-embedded sections) - Anti-ISLR antibody (ab232986)

Formalin-fixed, paraffin-embedded human prostate tissue stained for ISLR with ab232986 at 20 µg/ml in immunohistochemical analysis.

Secondary used: HRP-Linked Goat anti-Rabbit IgG polyclonal at 2 µg/ml. DAB staining.



Western blot - Anti-ISLR antibody (ab232986)

Anti-ISLR antibody (ab232986) at 2 µg/ml + Recombinant human ISLR protein

**Secondary**

HRP-Linked Guinea pig  
Anti-Rabbit Ab at 1/2000 dilution

**Predicted band size:** 46 kDa

**Please note:** All products are "FOR RESEARCH USE ONLY. NOT FOR USE IN DIAGNOSTIC PROCEDURES"

**Our Abpromise to you: Quality guaranteed and expert technical support**

- Replacement or refund for products not performing as stated on the datasheet
- Valid for 12 months from date of delivery
- Response to your inquiry within 24 hours
  
- We provide support in Chinese, English, French, German, Japanese and Spanish
- Extensive multi-media technical resources to help you
- We investigate all quality concerns to ensure our products perform to the highest standards

If the product does not perform as described on this datasheet, we will offer a refund or replacement. For full details of the Abpromise, please visit <https://www.abcam.com/abpromise> or contact our technical team.

### **Terms and conditions**

---

- Guarantee only valid for products bought direct from Abcam or one of our authorized distributors