



Product datasheet

Anti-ITIH1/SHAP antibody ab233032

8 Images

Overview

Product name	Anti-ITIH1/SHAP antibody
Description	Rabbit polyclonal to ITIH1/SHAP
Host species	Rabbit
Tested applications	Suitable for: WB, IHC-P
Species reactivity	Reacts with: Human, Pig
Immunogen	Recombinant fragment (His-tag) corresponding to Human ITIH1/SHAP aa 500-850. (Expressed in E.coli). Database link: P19827
	<div>  Run BLAST with  Run BLAST with </div>
Positive control	WB: Human serum; Pig heart lysate; Recombinant human ITIH1/SHAP protein. IHC-P: Human liver, breast cancer, stomach cancer, prostate, prostate cancer and lung cancer tissue.
General notes	<p>The Life Science industry has been in the grips of a reproducibility crisis for a number of years. Abcam is leading the way in addressing this with our range of recombinant monoclonal antibodies and knockout edited cell lines for gold-standard validation. Please check that this product meets your needs before purchasing.</p> <p>If you have any questions, special requirements or concerns, please send us an inquiry and/or contact our Support team ahead of purchase. Recommended alternatives for this product can be found below, along with publications, customer reviews and Q&As</p>

Properties

Form	Liquid
Storage instructions	Shipped at 4°C. Store at +4°C short term (1-2 weeks). Upon delivery aliquot. Store at -20°C long term. Avoid freeze / thaw cycle.
Storage buffer	pH: 7.40 Preservative: 0.011% Proclin 300 Constituents: 55.77% Glycerol (glycerin, glycerine), 44.219% PBS
Purity	Immunogen affinity purified
Purification notes	Antigen-specific affinity chromatography followed by Protein A affinity chromatography.
Clonality	Polyclonal
Isotype	IgG

Applications

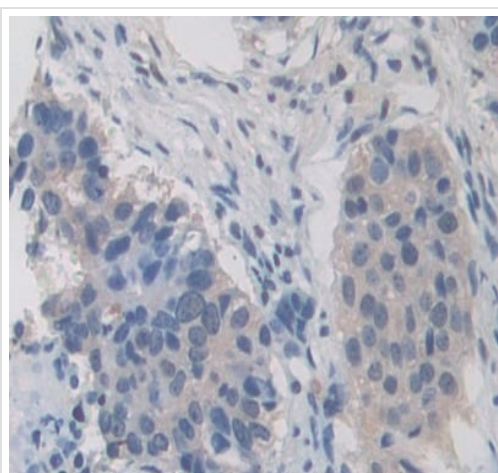
The Abpromise guarantee Our **Abpromise guarantee** covers the use of ab233032 in the following tested applications. The application notes include recommended starting dilutions; optimal dilutions/concentrations should be determined by the end user.

Application	Abreviews	Notes
WB		Use a concentration of 0.5 - 5 µg/ml.
IHC-P		Use a concentration of 5 - 20 µg/ml.

Target

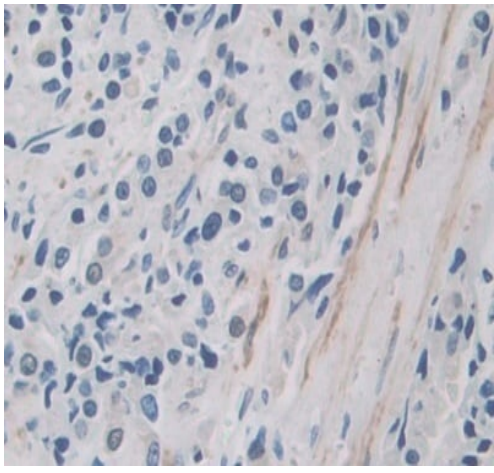
Function	May act as a carrier of hyaluronan in serum or as a binding protein between hyaluronan and other matrix protein, including those on cell surfaces in tissues to regulate the localization, synthesis and degradation of hyaluronan which are essential to cells undergoing biological processes. Contains a potential peptide which could stimulate a broad spectrum of phagocytotic cells.
Sequence similarities	Belongs to the ITIH family. Contains 1 VIT domain. Contains 1 VWFA domain.
Post-translational modifications	Heavy chains are linked to bikunin via chondroitin 4-sulfate esterified to the alpha-carboxyl of the C-terminal aspartate after propeptide cleavage. The S-linked glycan is composed of two 6-carbon sugars, possibly Glc or Gal.
Cellular localization	Secreted.

Images



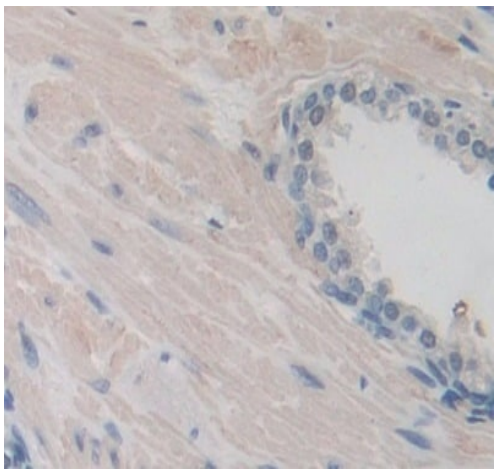
Formalin-fixed, paraffin-embedded human lung cancer tissue stained for ITIH1/SHAP using ab233032 at 10 µg/ml in immunohistochemical analysis. DAB staining.

Immunohistochemistry (Formalin/PFA-fixed paraffin-embedded sections) - Anti-ITIH1/SHAP antibody (ab233032)



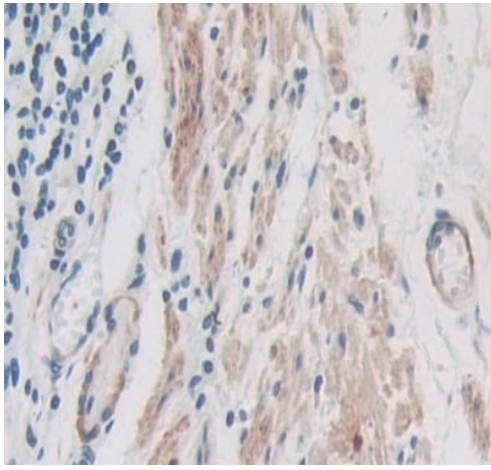
Immunohistochemistry (Formalin/PFA-fixed paraffin-embedded sections) - Anti-ITIH1/SHAP antibody (ab233032)

Formalin-fixed, paraffin-embedded human prostate cancer tissue stained for ITIH1/SHAP using ab233032 at 10 µg/ml in immunohistochemical analysis. DAB staining.



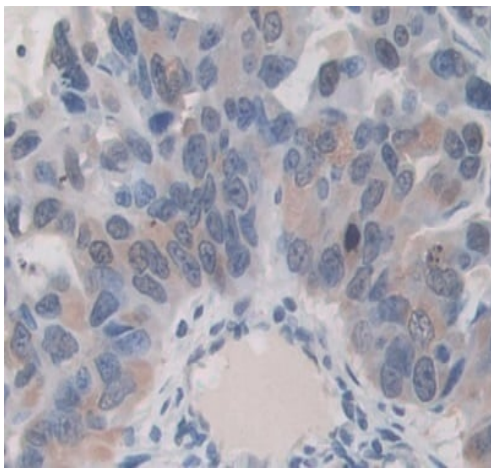
Immunohistochemistry (Formalin/PFA-fixed paraffin-embedded sections) - Anti-ITIH1/SHAP antibody (ab233032)

Formalin-fixed, paraffin-embedded human prostate tissue stained for ITIH1/SHAP using ab233032 at 10 µg/ml in immunohistochemical analysis. DAB staining.



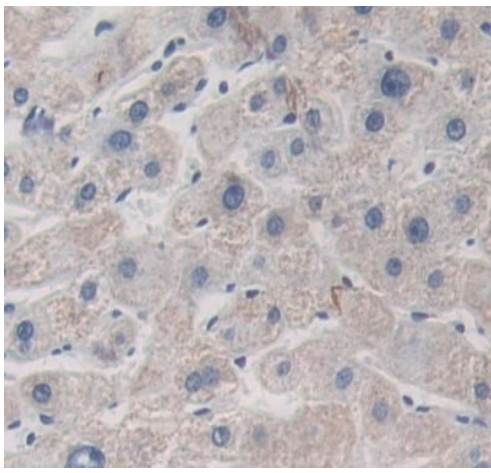
Immunohistochemistry (Formalin/PFA-fixed paraffin-embedded sections) - Anti-ITIH1/SHAP antibody (ab233032)

Formalin-fixed, paraffin-embedded human stomach cancer tissue stained for ITIH1/SHAP using ab233032 at 10 µg/ml in immunohistochemical analysis. DAB staining.



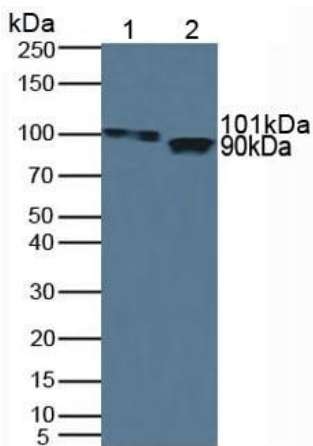
Immunohistochemistry (Formalin/PFA-fixed paraffin-embedded sections) - Anti-ITIH1/SHAP antibody (ab233032)

Formalin-fixed, paraffin-embedded human breast cancer tissue stained for ITIH1/SHAP using ab233032 at 10 µg/ml in immunohistochemical analysis. DAB staining.



Immunohistochemistry (Formalin/PFA-fixed paraffin-embedded sections) - Anti-ITIH1/SHAP antibody (ab233032)

Formalin-fixed, paraffin-embedded human liver tissue stained for ITIH1/SHAP using ab233032 at 10 µg/ml in immunohistochemical analysis. DAB staining.



Western blot - Anti-ITIH1/SHAP antibody (ab233032)

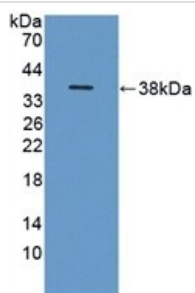
All lanes : Anti-ITIH1/SHAP antibody (ab233032) at 3 µg/ml

Lane 1 : Human serum

Lane 2 : Pig heart lysate

Secondary

All lanes : HRP-Linked Guinea pig anti-rabbit at 1/2000 dilution



Western blot - Anti-ITIH1/SHAP antibody (ab233032)

Anti-ITIH1/SHAP antibody (ab233032) at 3 µg/ml + Recombinant human ITIH1/SHAP protein

Secondary

HRP-Linked Guinea pig anti-rabbit at 1/2000 dilution

Please note: All products are "FOR RESEARCH USE ONLY. NOT FOR USE IN DIAGNOSTIC PROCEDURES"

Our Abpromise to you: Quality guaranteed and expert technical support

- Replacement or refund for products not performing as stated on the datasheet
- Valid for 12 months from date of delivery
- Response to your inquiry within 24 hours
- We provide support in Chinese, English, French, German, Japanese and Spanish
- Extensive multi-media technical resources to help you
- We investigate all quality concerns to ensure our products perform to the highest standards

If the product does not perform as described on this datasheet, we will offer a refund or replacement. For full details of the Abpromise, please visit <https://www.abcam.com/abpromise> or contact our technical team.

Terms and conditions

- Guarantee only valid for products bought direct from Abcam or one of our authorized distributors