

Product datasheet

Anti-JAK1 (phospho Y1034 + Y1035) antibody [EPR1899(2)] ab138005

Recombinant RabMAb

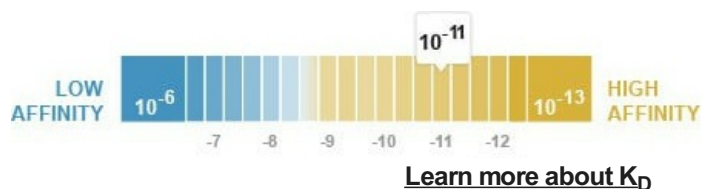
★★★★★ [1 Abreviews](#) [44 References](#) [8 Images](#)

Overview

Product name	Anti-JAK1 (phospho Y1034 + Y1035) antibody [EPR1899(2)]
Description	Rabbit monoclonal [EPR1899(2)] to JAK1 (phospho Y1034 + Y1035)
Host species	Rabbit
Specificity	According to our ELISA result, this antibody preferentially recognizes JAK1 with phospho Y1035, but also recognizes JAK1 with phospho Y1034 if high amount peptides were coated.
Tested applications	Suitable for: WB, IHC-P, Dot blot, ELISA
Species reactivity	Reacts with: Human
Immunogen	Synthetic peptide. This information is proprietary to Abcam and/or its suppliers.
Positive control	WB: Ramos treated with 1mM pervanadate for 30 minutes whole cell lysate. IHC-P: Human colon adenocarcinoma and liver carcinoma tissue. Dot: JAK1 (pY1034), JAK1 (pY1035) and JAK1 (pY1034/pY1035) phospho peptides. ELISA: JAK1 (pY1034), JAK1 (pY1035) and JAK1 non-phospho peptides.
General notes	<p>This product is a recombinant monoclonal antibody, which offers several advantages including:</p> <ul style="list-style-type: none">- High batch-to-batch consistency and reproducibility- Improved sensitivity and specificity- Long-term security of supply- Animal-free production <p>For more information see here.</p> <p>Our RabMAb[®] technology is a patented hybridoma-based technology for making rabbit monoclonal antibodies. For details on our patents, please refer to RabMAb[®] patents.</p> <p>Mouse: We have preliminary internal testing data to indicate this antibody may not react with this species. Please contact us for more information.</p>

Properties

Form	Liquid
Storage instructions	Shipped at 4°C. Store at +4°C short term (1-2 weeks). Upon delivery aliquot. Store at -20°C. Avoid freeze / thaw cycle.

Dissociation constant (K_D)K_D = 1.99 x 10⁻¹¹ M**Storage buffer**

pH: 7.2
 Preservative: 0.01% Sodium azide
 Constituents: 40% Glycerol (glycerin, glycerine), 0.21% BSA, 59% PBS

Purity

Protein A purified

Clonality

Monoclonal

Clone number

EPR1899(2)

Isotype

IgG

Applications**The Abpromise guarantee**Our **Abpromise guarantee** covers the use of ab138005 in the following tested applications.

The application notes include recommended starting dilutions; optimal dilutions/concentrations should be determined by the end user.

Application	Abreviews	Notes
WB	★★★★★ (1)	1/1000 - 1/10000. Predicted molecular weight: 133 kDa.
IHC-P		1/50 - 1/100. Perform heat mediated antigen retrieval with citrate buffer pH 6 before commencing with IHC staining protocol. See IHC antigen retrieval protocols .
Dot blot		Use at an assay dependent concentration.
ELISA		Use at an assay dependent concentration.

Target**Function**

Tyrosine kinase of the non-receptor type, involved in the IFN-alpha/beta/gamma signal pathway.
 Kinase partner for the interleukin (IL)-2 receptor.

Tissue specificity

Expressed at higher levels in primary colon tumors than in normal colon tissue. The expression level in metastatic colon tumors is comparable to the expression level in normal colon tissue.

Sequence similarities

Belongs to the protein kinase superfamily. Tyr protein kinase family. JAK subfamily.
 Contains 1 FERM domain.
 Contains 1 protein kinase domain.
 Contains 1 SH2 domain.

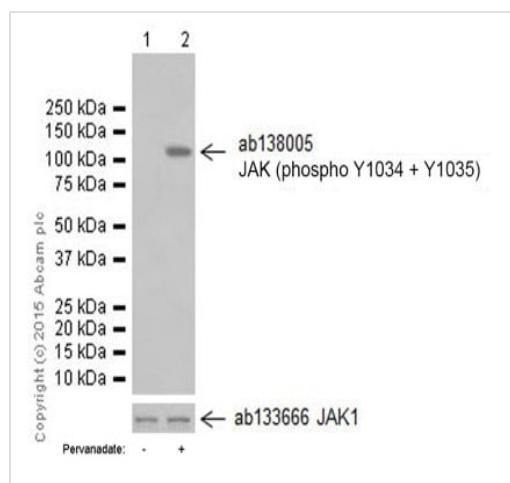
Domain

Possesses two phosphotransferase domains. The second one probably contains the catalytic domain (By similarity), while the presence of slight differences suggest a different role for domain 1.
 The FERM domain mediates interaction with JAKMIP1.

Cellular localization

Endomembrane system. Wholly intracellular, possibly membrane associated.

Images



Western blot - Anti-JAK1 (phospho Y1034 + Y1035) antibody [EPR1899(2)] (ab138005)

All lanes : Anti-JAK1 (phospho Y1034 + Y1035) antibody [EPR1899(2)] (ab138005) at 1/500 dilution

Lane 1 : Untreated Ramos whole cell lysate

Lane 2 : Ramos treated with 1mM pervanadate for 30 minutes whole cell lysate

Lysates/proteins at 10 µg per lane.

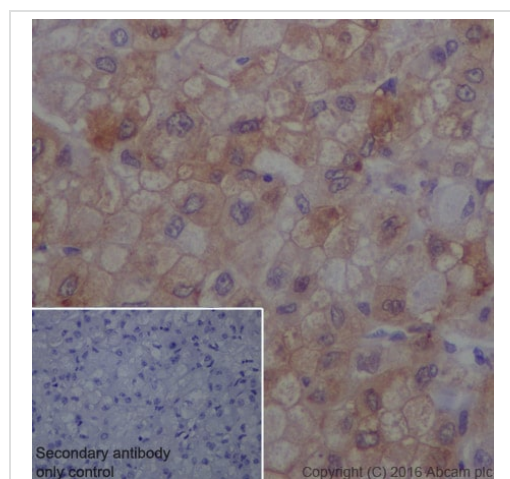
Secondary

All lanes : Goat Anti-Rabbit IgG H&L (HRP) (**ab97051**) at 1/20000 dilution

Predicted band size: 133 kDa

Observed band size: 133 kDa

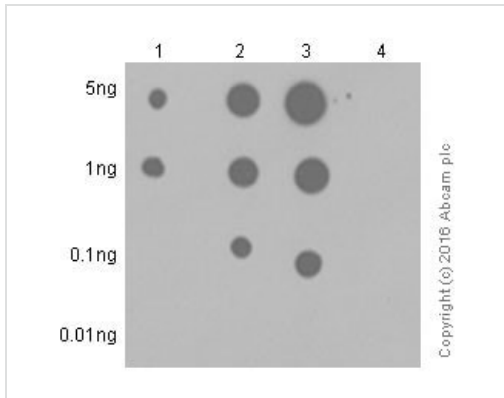
Blocking and diluting buffer 5% NFDm/TBST.



Immunohistochemistry (Formalin/PFA-fixed paraffin-embedded sections) - Anti-JAK1 (phospho Y1034 + Y1035) antibody [EPR1899(2)] (ab138005)

Immunohistochemical analysis of paraffin-embedded human liver carcinoma sections labelling JAK1 (phospho Y1034 + Y1035) with purified ab138005 at dilution of 1/50. The secondary antibody used was ImmunoHistoProbe HRP Polymer for Rabbit IgG at dilution of 1:10. The sample was counterstained with hematoxylin. Antigen retrieval was performed using EDTA Buffer; pH 9.0.

PBS was used instead of the primary antibody as the negative control and is shown in the inset.



Dot Blot - Anti-JAK1 (phospho Y1034 + Y1035) antibody [EPR1899(2)] (ab138005)

Primary antibody: ab138005 at a 1/1000 dilution (unpurified).

Secondary antibody: Goat Anti-Rabbit IgG, (H+L), Peroxidase conjugated (**ab97051**) at a 1/100,000 dilution.

Blocking/Dilution buffer and concentration: 5% NFDm/TBST.

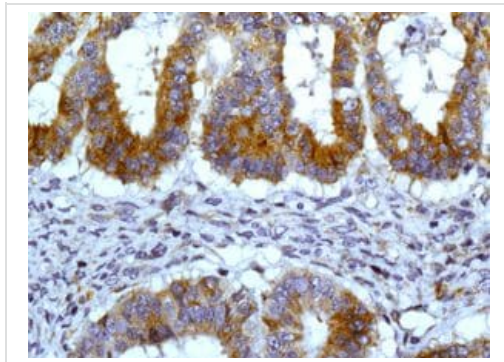
Lane 1: JAK1 (pY1034) phospho peptide

Lane 2: JAK1 (pY1035) phospho peptide

Lane 3: JAK1 (pY1034/pY1035) phospho peptide

Lane 4: JAK1 non-phospho peptide

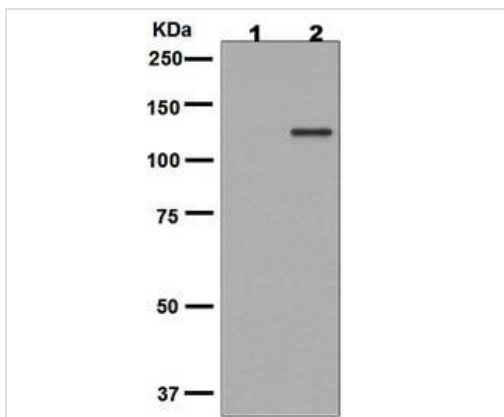
Exposure time: 3 mins.



Immunohistochemistry (Formalin/PFA-fixed paraffin-embedded sections) - Anti-JAK1 (phospho Y1034 + Y1035) antibody [EPR1899(2)] (ab138005)

Immunohistochemical analysis of paraffin embedded human colon adenocarcinoma tissue labelling JAK1 with unpurified ab138005 antibody at 1/50 dilution.

Perform heat mediated antigen retrieval with citrate buffer pH 6 before commencing with IHC staining protocol.



Western blot - Anti-JAK1 (phospho Y1034 + Y1035) antibody [EPR1899(2)] (ab138005)

All lanes : Anti-JAK1 (phospho Y1034 + Y1035) antibody [EPR1899(2)] (ab138005) at 1/1000 dilution (unpurified)

Lane 1 : Ramos cell lysates

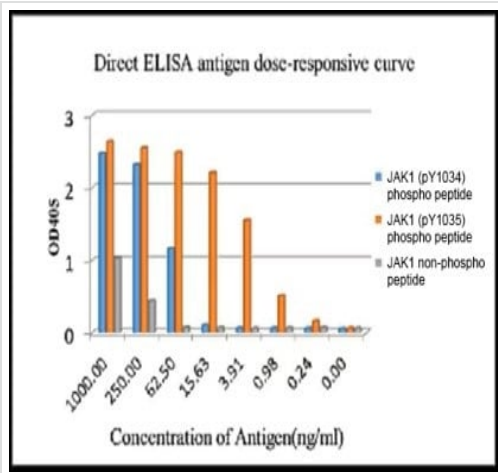
Lane 2 : Ramos cell lysates, treated with pervanadate

Lysates/proteins at 10 µg per lane.

Secondary

All lanes : goat anti-rabbit HRP at 1/2000 dilution

Predicted band size: 133 kDa



ELISA - Anti-JAK1 (phospho Y1034 + Y1035) antibody [EPR1899(2)] (ab138005)

Antigen:

JAK1 (pY1034) phospho peptide

JAK1 (pY1035) phospho peptide

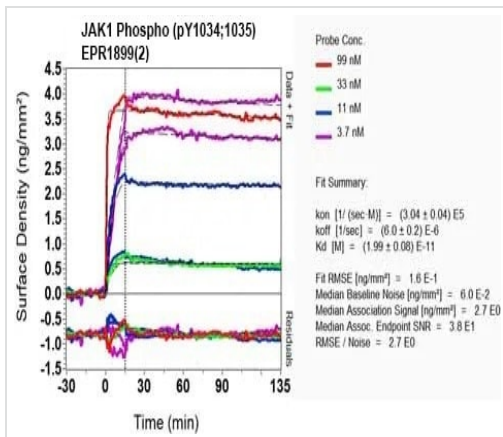
JAK1 non-phospho peptide

Antigen concentration: 0~1000ng/ml

Primary antibody concentration range: 1000ng/ml

Secondary antibody: Alkaline Phosphatase-conjugated AffiniPure

Goat Anti-Rabbit IgG(H+L), 1/2500 dilution



O1-RD Scanning - Anti-JAK1 (phospho Y1034 + Y1035) antibody [EPR1899(2)] (ab138005)

Equilibrium disassociation constant (K_D)

Learn more about K_D

[Click here to learn more about \$K_D\$](#)

Why choose a recombinant antibody?

Research with confidence
Consistent and reproducible results

Long-term and scalable supply
Recombinant technology

Success from the first experiment
Confirmed specificity

Ethical standards compliant
Animal-free production

Anti-JAK1 (phospho Y1034 + Y1035) antibody [EPR1899(2)] (ab138005)

Please note: All products are "FOR RESEARCH USE ONLY. NOT FOR USE IN DIAGNOSTIC PROCEDURES"

Our Abpromise to you: Quality guaranteed and expert technical support

- Replacement or refund for products not performing as stated on the datasheet
- Valid for 12 months from date of delivery
- Response to your inquiry within 24 hours

- We provide support in Chinese, English, French, German, Japanese and Spanish
- Extensive multi-media technical resources to help you
- We investigate all quality concerns to ensure our products perform to the highest standards

If the product does not perform as described on this datasheet, we will offer a refund or replacement. For full details of the Abpromise, please visit <https://www.abcam.com/abpromise> or contact our technical team.

Terms and conditions

- Guarantee only valid for products bought direct from Abcam or one of our authorized distributors