

Product datasheet

Anti-JAML antibody [EPR15289] ab183714

Recombinant RabMAb

★★★★★ [1 Abreviews](#) [2 References](#) [4 Images](#)

Overview

| | |
|----------------------------|--|
| Product name | Anti-JAML antibody [EPR15289] |
| Description | Rabbit monoclonal [EPR15289] to JAML |
| Host species | Rabbit |
| Tested applications | Suitable for: WB, IP Unsuitable for: Flow Cyt |
| Species reactivity | Reacts with: Mouse, Rat, Human |
| Immunogen | Recombinant fragment. This information is proprietary to Abcam and/or its suppliers. |
| Positive control | Human fetal liver, Jurkat, Molt-4, 293, C6 and Raw264.7 cell lysates; Molt-4 cells |
| General notes | <p>This product is a recombinant monoclonal antibody, which offers several advantages including:</p> <ul style="list-style-type: none">- High batch-to-batch consistency and reproducibility- Improved sensitivity and specificity- Long-term security of supply- Animal-free production <p>For more information see here.</p> <p>Our RabMAb[®] technology is a patented hybridoma-based technology for making rabbit monoclonal antibodies. For details on our patents, please refer to RabMAb[®] patents.</p> |

Properties

| | |
|-----------------------------|---|
| Form | Liquid |
| Storage instructions | Shipped at 4°C. Store at +4°C short term (1-2 weeks). Upon delivery aliquot. Store at -20°C long term. Avoid freeze / thaw cycle. |
| Storage buffer | pH: 7.2 Preservative: 0.01% Sodium azide Constituents: 59% PBS, 40% Glycerol (glycerin, glycerine), 0.05% BSA |
| Purity | Protein A purified |
| Clonality | Monoclonal |
| Clone number | EPR15289 |
| Isotype | IgG |

Applications

The Abpromise guarantee

Our **Abpromise guarantee** covers the use of ab183714 in the following tested applications.

The application notes include recommended starting dilutions; optimal dilutions/concentrations should be determined by the end user.

| Application | Abreviews | Notes |
|-------------|-----------|--|
| WB | ★★★★★ (1) | 1/1000 - 1/10000. Detects a band of approximately 60 kDa (predicted molecular weight: 44 kDa). |
| IP | | 1/40 - 1/60. |

Application notes

Is unsuitable for Flow Cyt.

Target

Function

May function in transmigration of leukocytes through epithelial and endothelial tissues. Expressed at the plasma membrane of polymorphonuclear leukocytes, it mediates adhesive interactions with CXADR, a protein of the junctional complex of epithelial cells. Enhances myeloid leukemia cell adhesion to endothelial cells.

Tissue specificity

Expression is restricted to the hematopoietic tissues with the exception of liver. Expressed in fetal liver, spleen and thymus.

Sequence similarities

Belongs to the immunoglobulin superfamily.
Contains 2 Ig-like V-type (immunoglobulin-like) domains.

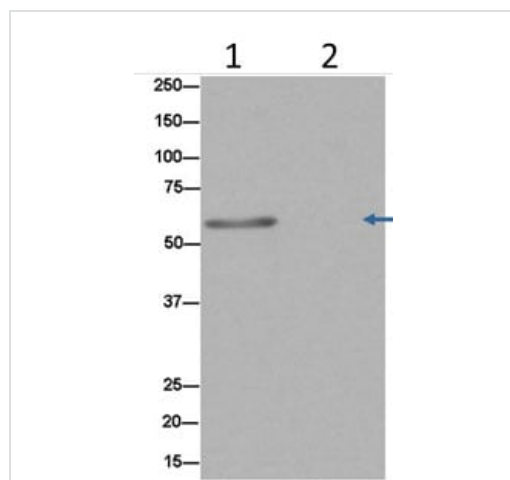
Domain

The Ig-like V-type domain 2 mediates interaction with CXADR.

Cellular localization

Cell junction. Cell membrane. Localized at the plasma membrane in areas of cell-cell contacts and at the cell surface of PMN.

Images

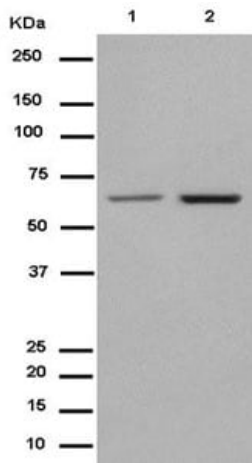


Western blot analysis of JAML in 293 cell lysate

immunoprecipitated using ab183714 at 1/50 dilution (Lane 1). Lane 2 : TBS instead of 293 lysate.

Secondary antibody: Anti-Rabbit IgG (HRP), specific to the non-reduced form of IgG at 1/1500 dilution

Immunoprecipitation - Anti-JAML antibody
[EPR15289] (ab183714)



Western blot - Anti-JAML antibody [EPR15289] (ab183714)

All lanes : Anti-JAML antibody [EPR15289] (ab183714) at 1/5000 dilution

Lane 1 : C6 (rat glioma cell line) whole cell lysate

Lane 2 : RAW 264.7 (mouse macrophage cell line transformed with Abelson murine leukemia virus) whole cell lysate

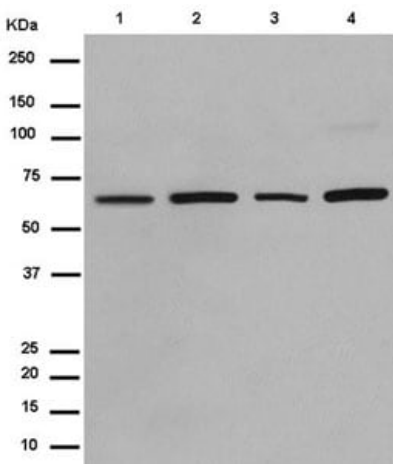
Lysates/proteins at 10 µg per lane.

Secondary

All lanes : Goat Anti-Rabbit IgG, (H+L), Peroxidase conjugate at 1/1000 dilution

Predicted band size: 44 kDa

Observed band size: 60 kDa



Western blot - Anti-JAML antibody [EPR15289] (ab183714)

All lanes : Anti-JAML antibody [EPR15289] (ab183714) at 1/20000 dilution

Lane 1 : Human fetal liver lysate

Lane 2 : Jurkat cell lysate

Lane 3 : Molt-4 cell lysate

Lane 4 : 293 cell lysate

Lysates/proteins at 20 µg per lane.

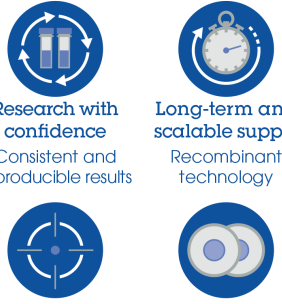
Secondary

All lanes : Goat Anti-Rabbit IgG, (H+L), Peroxidase conjugate at 1/1000 dilution

Predicted band size: 44 kDa

Observed band size: 60 kDa

Why choose a recombinant antibody?



- Research with confidence**
Consistent and reproducible results
- Long-term and scalable supply**
Recombinant technology
- Success from the first experiment**
Confirmed specificity
- Ethical standards compliant**
Animal-free production

Anti-JAML antibody [EPR15289] (ab183714)

Please note: All products are "FOR RESEARCH USE ONLY. NOT FOR USE IN DIAGNOSTIC PROCEDURES"

Our Abpromise to you: Quality guaranteed and expert technical support

- Replacement or refund for products not performing as stated on the datasheet
- Valid for 12 months from date of delivery
- Response to your inquiry within 24 hours
- We provide support in Chinese, English, French, German, Japanese and Spanish
- Extensive multi-media technical resources to help you
- We investigate all quality concerns to ensure our products perform to the highest standards

If the product does not perform as described on this datasheet, we will offer a refund or replacement. For full details of the Abpromise, please visit <https://www.abcam.com/abpromise> or contact our technical team.

Terms and conditions

- Guarantee only valid for products bought direct from Abcam or one of our authorized distributors