

Product datasheet

Anti-Japanese encephalitis virus antibody ab26950

[1 References](#) [1 Image](#)

Overview

Product name	Anti-Japanese encephalitis virus antibody
Description	Rabbit polyclonal to Japanese encephalitis virus
Host species	Rabbit
Tested applications	Suitable for: ICC/IF
Species reactivity	Reacts with: Japanese encephalitis virus
Immunogen	Viral particles from C6/36 (mosquito cell line) amplified Japanese encephalitis virus (Nakayama strain).
Positive control	Japanese encephalitis virus infected BHK21 cells
General notes	<p>The Life Science industry has been in the grips of a reproducibility crisis for a number of years. Abcam is leading the way in addressing this with our range of recombinant monoclonal antibodies and knockout edited cell lines for gold-standard validation. Please check that this product meets your needs before purchasing.</p> <p>If you have any questions, special requirements or concerns, please send us an inquiry and/or contact our Support team ahead of purchase. Recommended alternatives for this product can be found below, along with publications, customer reviews and Q&As</p>

Properties

Form	Liquid
Storage instructions	Shipped at 4°C. Store at +4°C short term (1-2 weeks). Upon delivery aliquot. Store at -20°C long term.
Storage buffer	Constituent: Whole serum
Purity	Whole antiserum
Clonality	Polyclonal
Isotype	IgG

Applications

The Abpromise guarantee Our **Abpromise guarantee** covers the use of ab26950 in the following tested applications. The application notes include recommended starting dilutions; optimal dilutions/concentrations should be determined by the end user.

Application	Abreviews	Notes
ICC/IF		

Application notes

ICC/IF: use at a dilution of 1/100.

Not yet tested in other applications.

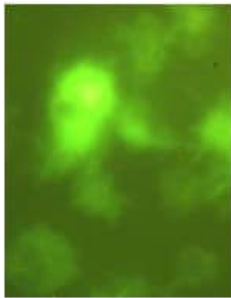
Optimal dilutions/concentrations should be determined by the end user.

Target

Relevance

Japanese encephalitis virus is a mosquito borne virus from the family Flaviviridae. Domestic pigs and wild birds are reservoirs of the virus, transmission to humans may cause severe symptoms. One of the most important Vectors of this disease is the mosquito *Culex tritaeniorhynchus*. This disease usually affects people in South East Asia and the Far East.

Images



Immunofluorescent analysis of Japanese encephalitis virus infected BHK21 cells using 10 µg/ml ab26950. Note that not every cell is infected.

Immunocytochemistry/ Immunofluorescence - Anti-Japanese encephalitis virus antibody (ab26950)

Please note: All products are "FOR RESEARCH USE ONLY. NOT FOR USE IN DIAGNOSTIC PROCEDURES"

Our Abpromise to you: Quality guaranteed and expert technical support

- Replacement or refund for products not performing as stated on the datasheet
- Valid for 12 months from date of delivery
- Response to your inquiry within 24 hours
- We provide support in Chinese, English, French, German, Japanese and Spanish
- Extensive multi-media technical resources to help you
- We investigate all quality concerns to ensure our products perform to the highest standards

If the product does not perform as described on this datasheet, we will offer a refund or replacement. For full details of the Abpromise, please visit <https://www.abcam.com/abpromise> or contact our technical team.

Terms and conditions

- Guarantee only valid for products bought direct from Abcam or one of our authorized distributors