

Product datasheet

Anti-JMJD1A antibody ab106456

[9 References](#) [2 Images](#)

Overview

Product name	Anti-JMJD1A antibody
Description	Rabbit polyclonal to JMJD1A
Host species	Rabbit
Specificity	ab106456 does not cross-react with JMJD1B or JMJD1C.
Tested applications	Suitable for: WB
Species reactivity	Reacts with: Human
Immunogen	Synthetic peptide corresponding to Human JMJD1A (N terminal). Database link: Q9Y4C1
Positive control	WB: 293, A549, HeLa, HepG2, MCF-7 and SK-N-SH cell lysates;
General notes	<p>The Life Science industry has been in the grips of a reproducibility crisis for a number of years. Abcam is leading the way in addressing this with our range of recombinant monoclonal antibodies and knockout edited cell lines for gold-standard validation. Please check that this product meets your needs before purchasing.</p> <p>If you have any questions, special requirements or concerns, please send us an inquiry and/or contact our Support team ahead of purchase. Recommended alternatives for this product can be found below, along with publications, customer reviews and Q&As</p>

Properties

Form	Liquid
Storage instructions	Shipped at 4°C. Store at 4°C (stable for up to 12 months).
Storage buffer	pH: 7.2 Preservative: 0.02% Sodium azide Constituent: PBS
Purity	Immunogen affinity purified
Purification notes	ab106456 is purified by affinity chromatography via a peptide column.
Clonality	Polyclonal
Isotype	IgG

Applications

Applications

The Abpromise guarantee

Our **Abpromise guarantee** covers the use of ab106456 in the following tested applications.

The application notes include recommended starting dilutions; optimal dilutions/concentrations should be determined by the end user.

Application	Abreviews	Notes
WB		Use a concentration of 1 - 2 µg/ml. Predicted molecular weight: 147 kDa.

Target

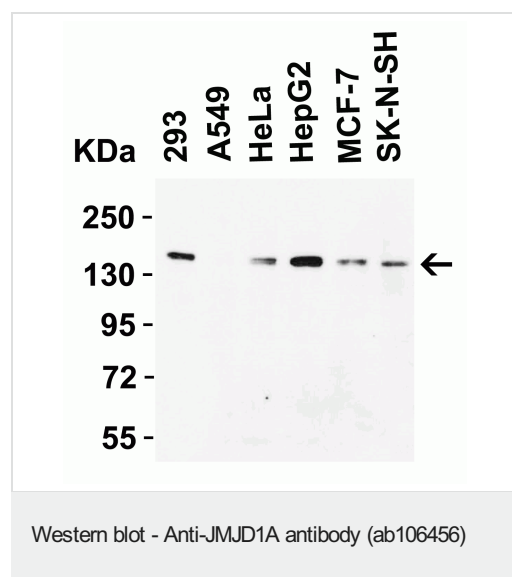
Relevance

This gene encodes a zinc finger protein that contains a jumonji domain and may play a role in hormone-dependent transcriptional activation. Alternative splicing results in multiple transcript variants.

Cellular localization

Cytoplasmic and Nuclear

Images



All lanes : Anti-JMJD1A antibody (ab106456) at 2 µg

Lane 1 : 293 cell lysate

Lane 2 : A549 cell lysate

Lane 3 : HeLa cell lysate

Lane 4 : HepG2 cell lysate

Lane 5 : MCF-7 cell lysate

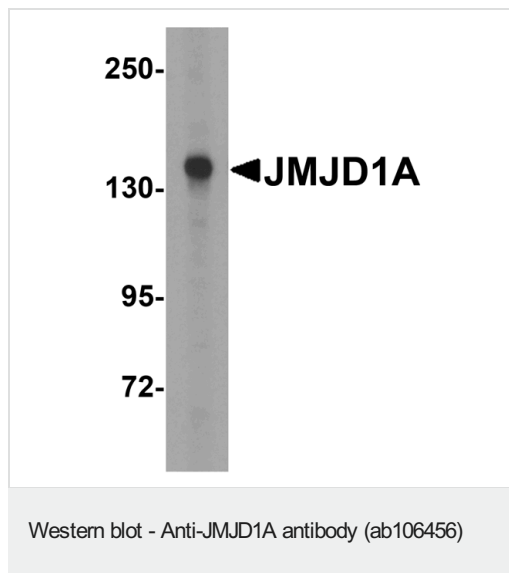
Lane 6 : SK-N-SH cell lysate

Lysates/proteins at 15 µg per lane.

Secondary

All lanes : Goat anti-rabbit IgG HRP conjugate at 1/10000 dilution

Predicted band size: 147 kDa



Anti-JMJD1A antibody (ab106456) at 1 µg/ml + HepG2 (human liver hepatocellular carcinoma cell line) cell lysate

Predicted band size: 147 kDa

Please note: All products are "FOR RESEARCH USE ONLY. NOT FOR USE IN DIAGNOSTIC PROCEDURES"

Our Abpromise to you: Quality guaranteed and expert technical support

- Replacement or refund for products not performing as stated on the datasheet
- Valid for 12 months from date of delivery
- Response to your inquiry within 24 hours
- We provide support in Chinese, English, French, German, Japanese and Spanish
- Extensive multi-media technical resources to help you
- We investigate all quality concerns to ensure our products perform to the highest standards

If the product does not perform as described on this datasheet, we will offer a refund or replacement. For full details of the Abpromise, please visit <https://www.abcam.com/abpromise> or contact our technical team.

Terms and conditions

- Guarantee only valid for products bought direct from Abcam or one of our authorized distributors