

# Anti-JMJD1C antibody ab130922

[2 References](#) [1 Image](#)

### Overview

<b>Product name</b>	Anti-JMJD1C antibody
<b>Description</b>	Rabbit polyclonal to JMJD1C
<b>Host species</b>	Rabbit
<b>Tested applications</b>	<b>Suitable for:</b> WB
<b>Species reactivity</b>	<b>Reacts with:</b> Human
<b>Immunogen</b>	Synthetic peptide corresponding to Human JMJD1C aa 150-250. Database link: <a href="#">Q15652</a>
<b>Positive control</b>	WB: HeLa and 293T whole cell lysates.
<b>General notes</b>	<p>The Life Science industry has been in the grips of a reproducibility crisis for a number of years. Abcam is leading the way in addressing this with our range of recombinant monoclonal antibodies and knockout edited cell lines for gold-standard validation. Please check that this product meets your needs before purchasing.</p> <p>If you have any questions, special requirements or concerns, please send us an inquiry and/or contact our Support team ahead of purchase. Recommended alternatives for this product can be found below, along with publications, customer reviews and Q&amp;As</p>

### Properties

<b>Form</b>	Liquid
<b>Storage instructions</b>	Shipped at 4°C. Store at +4°C.
<b>Storage buffer</b>	Preservative: 0.09% Sodium azide Constituents: 99% Tris buffered saline, 0.1% BSA
<b>Purity</b>	Immunogen affinity purified
<b>Purification notes</b>	Purified using an epitope specific to JMJD1C immobilized on solid support.
<b>Clonality</b>	Polyclonal
<b>Isotype</b>	IgG

### Applications

**The Abpromise guarantee** Our [Abpromise guarantee](#) covers the use of ab130922 in the following tested applications.

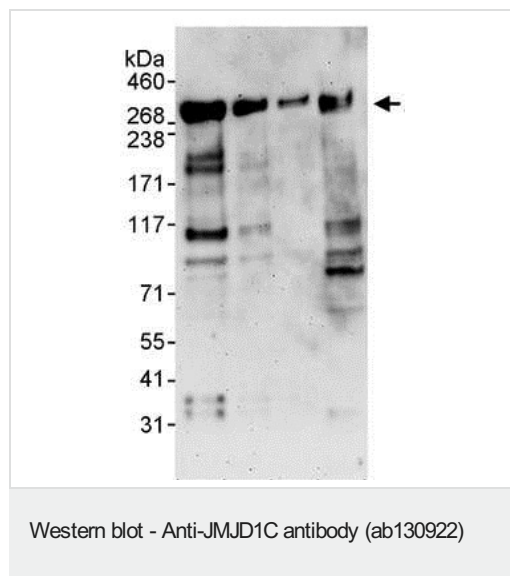
The application notes include recommended starting dilutions; optimal dilutions/concentrations should be determined by the end user.

Application	Abreviews	Notes
WB		1/2000 - 1/10000. Predicted molecular weight: 284 kDa.

## Target

<b>Function</b>	Probable histone demethylase that specifically demethylates 'Lys-9' of histone H3, thereby playing a central role in histone code. Demethylation of Lys residue generates formaldehyde and succinate. May be involved in hormone-dependent transcriptional activation, by participating in recruitment to androgen-receptor target genes.
<b>Sequence similarities</b>	Belongs to the JHDM2 histone demethylase family. Contains 1 JmjC domain.
<b>Domain</b>	Leu-Xaa-Xaa-Leu-Leu (LXXLL) motifs are known to mediate the association with nuclear receptors.
<b>Post-translational modifications</b>	Phosphorylated upon DNA damage, probably by ATM or ATR.
<b>Cellular localization</b>	Nucleus.

## Images



**All lanes :** Anti-JMJD1C antibody (ab130922) at 0.04 µg/ml

**Lane 1 :** HeLa whole cell lysate at 50 µg

**Lane 2 :** HeLa whole cell lysate at 15 µg

**Lane 3 :** HeLa whole cell lysate at 5 µg

**Lane 4 :** 293T whole cell lysate at 15 µg

Developed using the ECL technique.

**Predicted band size:** 284 kDa

**Exposure time:** 3 minutes

**Please note:** All products are "FOR RESEARCH USE ONLY. NOT FOR USE IN DIAGNOSTIC PROCEDURES"

## Our Abpromise to you: Quality guaranteed and expert technical support

- Replacement or refund for products not performing as stated on the datasheet
- Valid for 12 months from date of delivery
- Response to your inquiry within 24 hours

- We provide support in Chinese, English, French, German, Japanese and Spanish
- Extensive multi-media technical resources to help you
- We investigate all quality concerns to ensure our products perform to the highest standards

If the product does not perform as described on this datasheet, we will offer a refund or replacement. For full details of the Abpromise, please visit <https://www.abcam.com/abpromise> or contact our technical team.

#### **Terms and conditions**

---

- Guarantee only valid for products bought direct from Abcam or one of our authorized distributors