


Product datasheet

Anti-JP-2 antibody ab110056

★☆☆☆☆ [1 Abreviews](#) [1 References](#) [3 Images](#)

Overview

Product name	Anti-JP-2 antibody
Description	Rabbit polyclonal to JP-2
Host species	Rabbit
Specificity	Multiple isoforms of JPH2 are known to exist.
Tested applications	Suitable for: WB, IHC-P
Species reactivity	Reacts with: Mouse, Human Predicted to work with: Rat 
Immunogen	Synthetic peptide corresponding to Human JP-2 (C terminal).
Positive control	Human Heart and Skeletal Muscle. Mouse brain tissue lysate.
General notes	<p>The Life Science industry has been in the grips of a reproducibility crisis for a number of years. Abcam is leading the way in addressing this with our range of recombinant monoclonal antibodies and knockout edited cell lines for gold-standard validation. Please check that this product meets your needs before purchasing.</p> <p>If you have any questions, special requirements or concerns, please send us an inquiry and/or contact our Support team ahead of purchase. Recommended alternatives for this product can be found below, along with publications, customer reviews and Q&As</p>

Properties

Form	Liquid
Storage instructions	Shipped at 4°C. Store at +4°C short term (1-2 weeks). Upon delivery aliquot. Store at -20°C long term.
Storage buffer	pH: 7.4 Preservative: 0.02% Sodium azide Constituent: PBS
Purity	Immunogen affinity purified
Clonality	Polyclonal
Isotype	IgG

Applications

Applications

The Abpromise guarantee

Our **Abpromise guarantee** covers the use of ab110056 in the following tested applications.

The application notes include recommended starting dilutions; optimal dilutions/concentrations should be determined by the end user.

Application	Abreviews	Notes
WB		Use a concentration of 1 - 2 µg/ml. Predicted molecular weight: 75 kDa.
IHC-P		Use a concentration of 5 µg/ml.

Target

Function

Contributes to the stabilization of the junctional membrane complexes, which are common to excitable cells and mediate cross-talk between cell surface and intracellular ion channels. Probably acts by anchoring the plasma membrane and endoplasmic/sarcoplasmic reticulum. Contributes to the construction of skeletal muscle triad junctions, and plays an essential role in heart development.

Tissue specificity

Specifically expressed in skeletal muscle and heart.

Involvement in disease

Defects in JPH2 are the cause of cardiomyopathy familial hypertrophic type 17 (CMH17) [MIM:613873]. CMH17 is a hereditary heart disorder characterized by ventricular hypertrophy, which is usually asymmetric and often involves the interventricular septum. The symptoms include dyspnea, syncope, collapse, palpitations, and chest pain. They can be readily provoked by exercise. The disorder has inter- and intrafamilial variability ranging from benign to malignant forms with high risk of cardiac failure and sudden cardiac death.

Sequence similarities

Belongs to the junctophilin family.
Contains 8 MORN repeats.

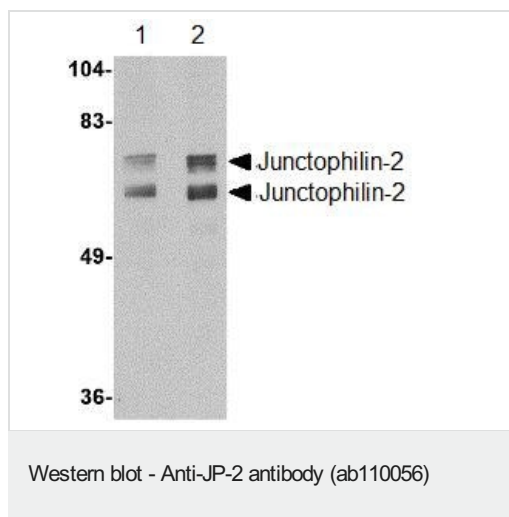
Domain

The MORN (membrane occupation and recognition nexus) repeats contribute to the plasma membrane binding, possibly by interacting with phospholipids.

Cellular localization

Cell membrane. Endoplasmic reticulum membrane. Sarcoplasmic reticulum membrane. Localized predominantly on the plasma membrane. The transmembrane domain is anchored in endoplasmic/sarcoplasmic reticulum membrane, while the N-terminal part associates with the plasma membrane. In heart cells, it predominantly associates along Z lines within myocytes. In skeletal muscle, it is specifically localized at the junction of A and I bands.

Images

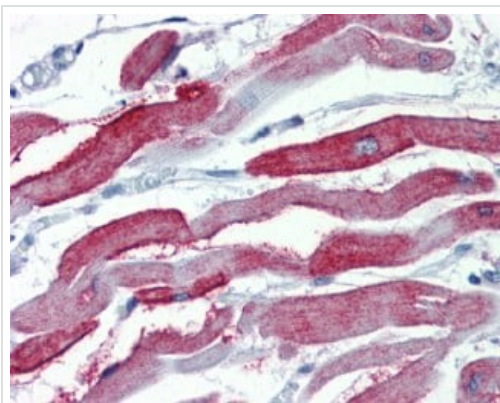


Lane 1 : Anti-JP-2 antibody (ab110056) at 1 µg/ml

Lane 2 : Anti-JP-2 antibody (ab110056) at 2 µg/ml

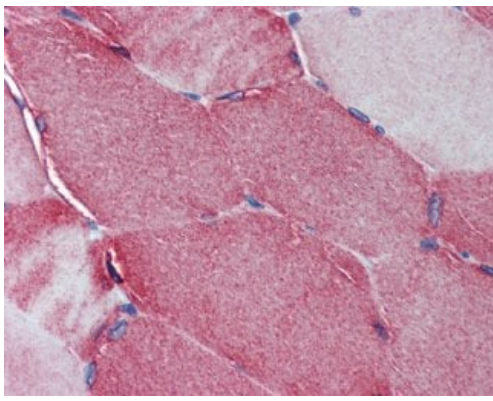
All lanes : Mouse brain tissue lysate

Predicted band size: 75 kDa



ab110056 at 5 µg/ml staining JP-2 in Formalin-Fixed, Paraffin-Embedded Human Heart by Immunohistochemistry.

Immunohistochemistry (Formalin/PFA-fixed paraffin-embedded sections) - Anti-JP-2 antibody (ab110056)



Immunohistochemistry (Formalin/PFA-fixed paraffin-embedded sections) - Anti-JP-2 antibody (ab110056)

ab110056 at 5 µg/ml staining JP-2 in Formalin-Fixed, Paraffin-Embedded Human Skeletal Muscle by Immunohistochemistry.

Please note: All products are "FOR RESEARCH USE ONLY. NOT FOR USE IN DIAGNOSTIC PROCEDURES"

Our Abpromise to you: Quality guaranteed and expert technical support

- Replacement or refund for products not performing as stated on the datasheet
- Valid for 12 months from date of delivery
- Response to your inquiry within 24 hours
- We provide support in Chinese, English, French, German, Japanese and Spanish
- Extensive multi-media technical resources to help you
- We investigate all quality concerns to ensure our products perform to the highest standards

If the product does not perform as described on this datasheet, we will offer a refund or replacement. For full details of the Abpromise, please visit <https://www.abcam.com/abpromise> or contact our technical team.

Terms and conditions

- Guarantee only valid for products bought direct from Abcam or one of our authorized distributors