

## Product datasheet

# Anti-Junctional Adhesion Molecule 1/JAM-A antibody ab180821

★★★★★ [3 Abreviews](#) [14 References](#) [2 Images](#)

### Overview

<b>Product name</b>	Anti-Junctional Adhesion Molecule 1/JAM-A antibody
<b>Description</b>	Rabbit polyclonal to Junctional Adhesion Molecule 1/JAM-A
<b>Host species</b>	Rabbit
<b>Tested applications</b>	<b>Suitable for:</b> WB, ICC/IF
<b>Species reactivity</b>	<b>Reacts with:</b> Human
<b>Immunogen</b>	Recombinant fragment corresponding to Human Junctional Adhesion Molecule 1/JAM-A aa 30-238. Extracellular domain. Sequence:  TVHSSEPEVRIPENNPVKLSCAYSGFSSPRVEWKFDQGD TTRLVCYNNKI TASYEDRVTFLLPTGTFKSVTREDTGTTCMVSEEGGNSY GEVKVKLML VPPSKPTVNIPSSATIGNRAVLTCSEQDGSPPEYTWFKD GVMPTNPKS TRAFSNSSYVLNPTTGELVFDPLSASDTGEYSCEARNGYG TPMTSNAVRM EAVERNVGV

Database link: [Q9Y624](#)

 [Run BLAST with](#)

 [Run BLAST with](#)

### General notes

The Life Science industry has been in the grips of a reproducibility crisis for a number of years. Abcam is leading the way in addressing this with our range of recombinant monoclonal antibodies and knockout edited cell lines for gold-standard validation. Please check that this product meets your needs before purchasing.

If you have any questions, special requirements or concerns, please send us an inquiry and/or contact our Support team ahead of purchase. Recommended alternatives for this product can be found below, along with publications, customer reviews and Q&As

### Properties

<b>Form</b>	Liquid
<b>Storage instructions</b>	Shipped at 4°C. Store at +4°C short term (1-2 weeks). Upon delivery aliquot. Store at -20°C long

	term. Avoid freeze / thaw cycle.
<b>Storage buffer</b>	pH: 7.30 Preservative: 0.02% Sodium azide Constituents: 50% Glycerol, 49% PBS
<b>Purity</b>	Immunogen affinity purified
<b>Clonality</b>	Polyclonal
<b>Isotype</b>	IgG

## Applications

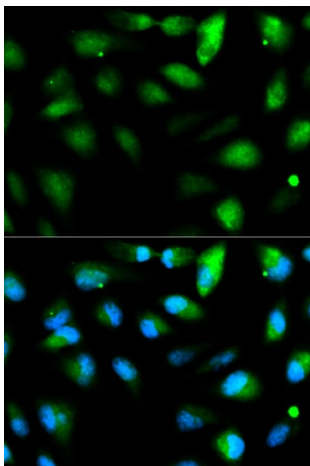
**The Abpromise guarantee** Our **Abpromise guarantee** covers the use of ab180821 in the following tested applications.  
The application notes include recommended starting dilutions; optimal dilutions/concentrations should be determined by the end user.

Application	Abreviews	Notes
<b>WB</b>		1/500 - 1/2000. Predicted molecular weight: 32 kDa.
<b>ICC/IF</b>		Use at an assay dependent concentration.

## Target

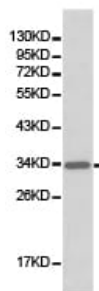
<b>Function</b>	Seems to plays a role in epithelial tight junction formation. Appears early in primordial forms of cell junctions and recruits PARD3. The association of the PARD6-PARD3 complex may prevent the interaction of PARD3 with JAM1, thereby preventing tight junction assembly (By similarity). Plays a role in regulating monocyte transmigration involved in integrity of epithelial barrier. Involved in platelet activation. In case of orthoreovirus infection, serves as receptor for the virus.
<b>Sequence similarities</b>	Belongs to the immunoglobulin superfamily. Contains 2 Ig-like V-type (immunoglobulin-like) domains.
<b>Post-translational modifications</b>	N-glycosylated.
<b>Cellular localization</b>	Cell junction > tight junction. Cell membrane. Localized at tight junctions of both epithelial and endothelial cells.

## Images



Immunocytochemistry/Immunofluorescence analysis of HeLa cells using ab180821. Blue DAPI for nuclear staining.

Immunocytochemistry/ Immunofluorescence - Anti-Junctional Adhesion Molecule 1/JAM-A antibody (ab180821)



Anti-Junctional Adhesion Molecule 1/JAM-A antibody (ab180821) at 1/500 dilution + HeLa cell lysate

**Predicted band size: 32 kDa**

Western blot - Anti-Junctional Adhesion Molecule 1/JAM-A antibody (ab180821)

**Please note:** All products are "FOR RESEARCH USE ONLY. NOT FOR USE IN DIAGNOSTIC PROCEDURES"

### Our Abpromise to you: Quality guaranteed and expert technical support

- Replacement or refund for products not performing as stated on the datasheet
- Valid for 12 months from date of delivery
- Response to your inquiry within 24 hours

- We provide support in Chinese, English, French, German, Japanese and Spanish
- Extensive multi-media technical resources to help you
- We investigate all quality concerns to ensure our products perform to the highest standards

If the product does not perform as described on this datasheet, we will offer a refund or replacement. For full details of the Abpromise, please visit <https://www.abcam.com/abpromise> or contact our technical team.

#### **Terms and conditions**

---

- Guarantee only valid for products bought direct from Abcam or one of our authorized distributors