


Product datasheet

Anti-Junctional Adhesion Molecule 2/JAM-B antibody [EPR2489(2)] ab156586

Recombinant RabMAb

[2 Abreviews](#) [1 References](#) [3 Images](#)

Overview

Product name	Anti-Junctional Adhesion Molecule 2/JAM-B antibody [EPR2489(2)]
Description	Rabbit monoclonal [EPR2489(2)] to Junctional Adhesion Molecule 2/JAM-B
Host species	Rabbit
Tested applications	Suitable for: Flow Cyt (Intra), WB Unsuitable for: ICC/IF, IHC-P or IP
Species reactivity	Reacts with: Human Predicted to work with: Mouse, Rat 
Immunogen	Synthetic peptide. This information is proprietary to Abcam and/or its suppliers.
Positive control	HUVEC, HeLa, JAR and A431 cell lysates, A431 cells
General notes	<p>This product is a recombinant monoclonal antibody, which offers several advantages including:</p> <ul style="list-style-type: none"> - High batch-to-batch consistency and reproducibility - Improved sensitivity and specificity - Long-term security of supply - Animal-free production <p>For more information see here.</p> <p>Our RabMAb[®] technology is a patented hybridoma-based technology for making rabbit monoclonal antibodies. For details on our patents, please refer to RabMAb[®] patents.</p>

Properties

Form	Liquid
Storage instructions	Shipped at 4°C. Upon delivery aliquot and store at -20°C. Avoid freeze / thaw cycles.
Storage buffer	pH: 7.2 Preservative: 0.01% Sodium azide Constituents: 9% PBS, 40% Glycerol (glycerin, glycerine), 0.05% BSA, 50% Tissue culture supernatant
Purity	Tissue culture supernatant
Clonality	Monoclonal

Clone number EPR2489(2)

Isotype IgG

Applications

The Abpromise guarantee Our **Abpromise guarantee** covers the use of ab156586 in the following tested applications. The application notes include recommended starting dilutions; optimal dilutions/concentrations should be determined by the end user.

Application	Abreviews	Notes
Flow Cyt (Intra)		1/100 - 1/500. ab172730 - Rabbit monoclonal IgG, is suitable for use as an isotype control with this antibody.
WB		1/1000 - 1/10000. Predicted molecular weight: 33 kDa.

Application notes Is unsuitable for ICC/IF, IHC-P or IP.

Target

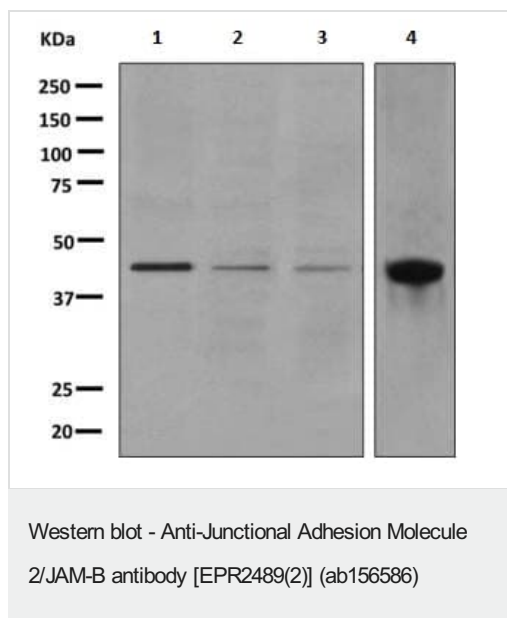
Function May play a role in the processes of lymphocyte homing to secondary lymphoid organs.

Tissue specificity Highest expression in the heart, placenta, lung, foreskin and lymph node. Prominently expressed on high endothelial venules, also present on the endothelia of other vessels. Localized to the intercellular boundaries of high endothelial cells.

Sequence similarities Belongs to the immunoglobulin superfamily.
Contains 1 Ig-like C2-type (immunoglobulin-like) domain.
Contains 1 Ig-like V-type (immunoglobulin-like) domain.

Cellular localization Cell junction > tight junction. Cell membrane. Localized at tight junctions of both epithelial and endothelial cells.

Images



All lanes : Anti-Junctional Adhesion Molecule 2/JAM-B antibody [EPR2489(2)] (ab156586) at 1/1000 dilution

Lane 1 : HUVEC cell lysates

Lane 2 : HeLa cell lysates

Lane 3 : JAR cell lysates

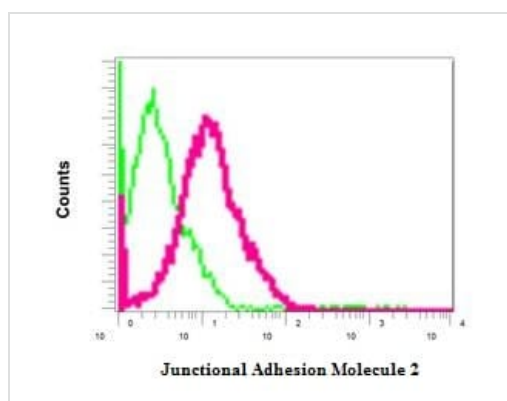
Lane 4 : A431 cell lysates

Lysates/proteins at 10 µg per lane.

Secondary

All lanes : HRP labelled goat anti-rabbit at 1/2000 dilution

Predicted band size: 33 kDa



Intracellular flow cytometric analysis of permeabilized A431 cells labeling Junctional Adhesion Molecule 2/JAM-B using ab156586 at a 1/100 dilution (red) or a rabbit IgG control (green).

Why choose a recombinant antibody?

Research with confidence
Consistent and reproducible results

Long-term and scalable supply
Recombinant technology

Success from the first experiment
Confirmed specificity

Ethical standards compliant
Animal-free production

Anti-Junctional Adhesion Molecule 2/JAM-B antibody [EPR2489(2)] (ab156586)

Please note: All products are "FOR RESEARCH USE ONLY. NOT FOR USE IN DIAGNOSTIC PROCEDURES"

Our Abpromise to you: Quality guaranteed and expert technical support

- Replacement or refund for products not performing as stated on the datasheet
- Valid for 12 months from date of delivery
- Response to your inquiry within 24 hours

- We provide support in Chinese, English, French, German, Japanese and Spanish
- Extensive multi-media technical resources to help you
- We investigate all quality concerns to ensure our products perform to the highest standards

If the product does not perform as described on this datasheet, we will offer a refund or replacement. For full details of the Abpromise, please visit <https://www.abcam.com/abpromise> or contact our technical team.

Terms and conditions

- Guarantee only valid for products bought direct from Abcam or one of our authorized distributors