

Product datasheet

Anti-Kallikrein 10/K10 antibody ab229690

[2 Images](#)

Overview

Product name	Anti-Kallikrein 10/K10 antibody
Description	Rabbit polyclonal to Kallikrein 10/K10
Host species	Rabbit
Tested applications	Suitable for: IHC-P
Species reactivity	Reacts with: Human
Immunogen	Recombinant fragment corresponding to Human Kallikrein 10/K10 aa 1 to the C-terminus. Database link: O43240

 [Run BLAST with](#)

 [Run BLAST with](#)

Positive control WB: Human prostate cancer and pancreatic tissue.

General notes The Life Science industry has been in the grips of a reproducibility crisis for a number of years. Abcam is leading the way in addressing this with our range of recombinant monoclonal antibodies and knockout edited cell lines for gold-standard validation. Please check that this product meets your needs before purchasing.

If you have any questions, special requirements or concerns, please send us an inquiry and/or contact our Support team ahead of purchase. Recommended alternatives for this product can be found below, along with publications, customer reviews and Q&As

Properties

Form	Liquid
Storage instructions	Shipped at 4°C. Store at +4°C short term (1-2 weeks). Upon delivery aliquot. Store at -20°C long term. Avoid freeze / thaw cycle.
Storage buffer	pH: 7.30 Preservative: 0.02% Sodium azide Constituents: PBS, 50% Glycerol (glycerin, glycerine)
Purity	Immunogen affinity purified
Clonality	Polyclonal
Isotype	IgG

Applications

The Abpromise guarantee

Our **Abpromise guarantee** covers the use of ab229690 in the following tested applications.

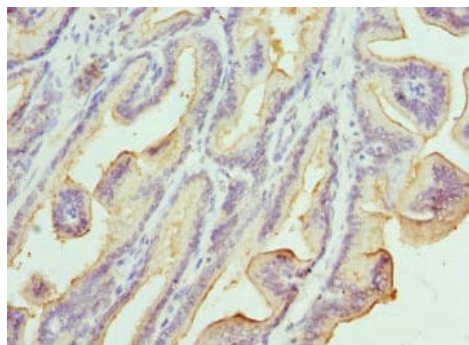
The application notes include recommended starting dilutions; optimal dilutions/concentrations should be determined by the end user.

Application	Abreviews	Notes
IHC-P		1/20 - 1/200.

Target

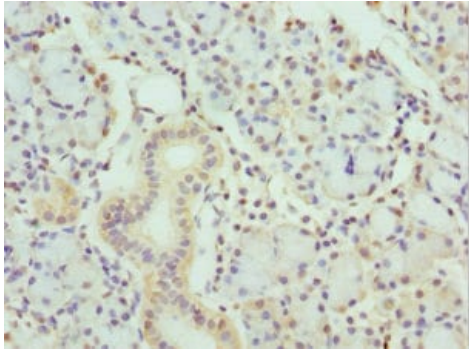
Function	Has a tumor-suppressor role for NES1 in breast and prostate cancer.
Tissue specificity	Expressed in breast, ovary and prostate.
Sequence similarities	Belongs to the peptidase S1 family. Kallikrein subfamily. Contains 1 peptidase S1 domain.
Developmental stage	Down-regulated during breast cancer progression.
Cellular localization	Secreted.

Images



Paraffin-embedded human prostate cancer tissue stained for Kallikrein 10/K10 using ab229690 at 1/100 dilution in immunohistochemical analysis.

Immunohistochemistry (Formalin/PFA-fixed paraffin-embedded sections) - Anti-Kallikrein 10/K10 antibody (ab229690)



Paraffin-embedded human pancreatic tissue stained for Kallikrein 10/K10 using ab229690 at 1/100 dilution in immunohistochemical analysis.

Immunohistochemistry (Formalin/PFA-fixed paraffin-embedded sections) - Anti-Kallikrein 10/K10 antibody (ab229690)

Please note: All products are "FOR RESEARCH USE ONLY. NOT FOR USE IN DIAGNOSTIC PROCEDURES"

Our Abpromise to you: Quality guaranteed and expert technical support

- Replacement or refund for products not performing as stated on the datasheet
- Valid for 12 months from date of delivery
- Response to your inquiry within 24 hours
- We provide support in Chinese, English, French, German, Japanese and Spanish
- Extensive multi-media technical resources to help you
- We investigate all quality concerns to ensure our products perform to the highest standards

If the product does not perform as described on this datasheet, we will offer a refund or replacement. For full details of the Abpromise, please visit <https://www.abcam.com/abpromise> or contact our technical team.

Terms and conditions

- Guarantee only valid for products bought direct from Abcam or one of our authorized distributors