


Anti-Kallikrein 14 antibody [EPR7209] - BSA and Azide free ab248246

Recombinant RabMAb

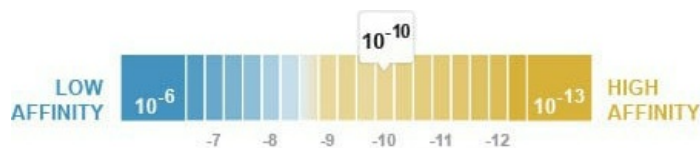
3 Images

Overview

Product name	Anti-Kallikrein 14 antibody [EPR7209] - BSA and Azide free
Description	Rabbit monoclonal [EPR7209] to Kallikrein 14 - BSA and Azide free
Host species	Rabbit
Tested applications	Suitable for: WB Unsuitable for: Flow Cyt, ICC/IF, IHC-P or IP
Species reactivity	Reacts with: Human Predicted to work with: Mouse, Rat 
Immunogen	Synthetic peptide. This information is proprietary to Abcam and/or its suppliers.
General notes	<p>ab248246 is the carrier-free version of ab128957.</p> <p>Our carrier-free antibodies are typically supplied in a PBS-only formulation, purified and free of BSA, sodium azide and glycerol. The carrier-free buffer and high concentration allow for increased conjugation efficiency.</p> <p>This conjugation-ready format is designed for use with fluorochromes, metal isotopes, oligonucleotides, and enzymes, which makes them ideal for antibody labelling, functional and cell-based assays, flow-based assays (e.g. mass cytometry) and Multiplex Imaging applications.</p> <p>Use our conjugation kits for antibody conjugates that are ready-to-use in as little as 20 minutes with <1 minute hands-on-time and 100% antibody recovery: available for fluorescent dyes, HRP, biotin and gold.</p> <p>This product is compatible with the Maxpar[®] Antibody Labeling Kit from Fluidigm, without the need for antibody preparation. Maxpar[®] is a trademark of Fluidigm Canada Inc.</p> <p>This product is a recombinant monoclonal antibody, which offers several advantages including:</p> <ul style="list-style-type: none"> - High batch-to-batch consistency and reproducibility - Improved sensitivity and specificity - Long-term security of supply - Animal-free production <p>For more information see here.</p> <p>Our RabMAb[®] technology is a patented hybridoma-based technology for making rabbit monoclonal antibodies. For details on our patents, please refer to RabMAb[®] patents.</p>

Properties

Form	Liquid
Storage instructions	Shipped at 4°C. Store at +4°C. Do Not Freeze.
Dissociation constant (K_D)	$K_D = 1.51 \times 10^{-10} \text{ M}$



[Learn more about \$K_D\$](#)

Storage buffer	pH: 7.2 Constituent: PBS
Carrier free	Yes
Purity	Protein A purified
Clonality	Monoclonal
Clone number	EPR7209
Isotype	IgG

Applications

The Abpromise guarantee Our **Abpromise guarantee** covers the use of ab248246 in the following tested applications. The application notes include recommended starting dilutions; optimal dilutions/concentrations should be determined by the end user.

Application	Abreviews	Notes
WB		Use at an assay dependent concentration. Detects a band of approximately 29, 31 kDa (predicted molecular weight: 29 kDa).

Application notes Is unsuitable for Flow Cyt, ICC/IF, IHC-P or IP.

Target

Function	Serine-type endopeptidase with a dual trypsin-like and chymotrypsin-like substrate specificity. May activate/inactivate the proteinase-activated receptors F2R, F2RL1 and F2RL3 and other kallikreins including KLK1, KLK3, KLK5 and KLK11. May function in seminal clot liquefaction through direct cleavage of the semenogelin SEMG1 and SEMG2 and activation of KLK3. May function through desmoglein DSG1 cleavage in epidermal desquamation a process by which the most superficial corneocytes are shed from the skin surface. May be involved in several aspects of tumor progression including growth, invasion and angiogenesis.
Tissue specificity	Highly expressed in CNS, bone marrow and fetal liver. Also expressed in breast, thyroid, kidney, colon, pancreas, spleen, prostate, uterus, small intestine, placenta and skeletal muscle. Among 40 tissues tested, the highest expression is detected in skin followed by breast and prostate (at protein level). Expressed in stratum corneum by sweat ducts and sweat glands and detected in sweat (at protein level).
Sequence similarities	Belongs to the peptidase S1 family. Kallikrein subfamily. Contains 1 peptidase S1 domain.

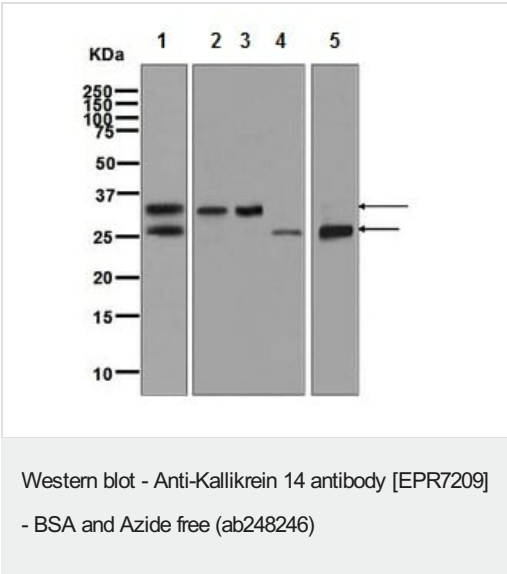
Post-translational
modifications

Cellular localization

Proteolytic cleavage of the activation peptide produces the active enzyme.

Secreted > extracellular space.

Images



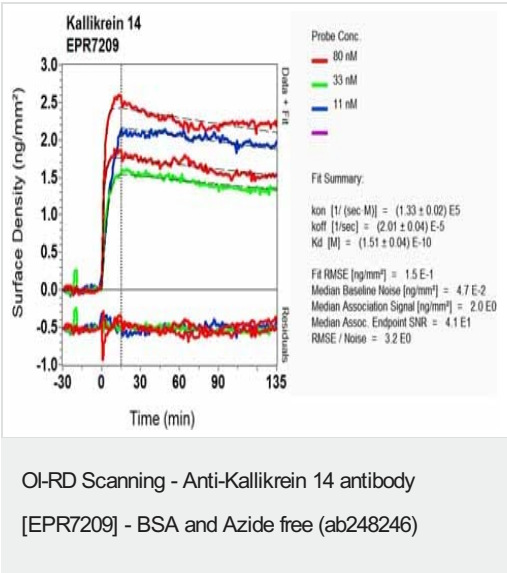
All lanes : Anti-Kallikrein 14 antibody [EPR7209] ([ab128957](#)) at 1/1000 dilution

- Lane 1 : SH-SY5Y cell lysate
- Lane 2 : Fetal liver lysate
- Lane 3 : Fetal kidney lysate
- Lane 4 : HACAT cell lysate
- Lane 5 : Prostate cancer lysate

Lysates/proteins at 10 µg per lane.

Predicted band size: 29 kDa
Observed band size: 31 kDa

This data was developed using [ab128957](#), the same antibody clone in a different buffer formulation.



This data was developed using [ab128957](#), the same antibody clone in a different buffer formulation. Equilibrium disassociation constant (K_D)

Learn more about K_D

[Click here to learn more about \$K_D\$](#)

Why choose a recombinant antibody?



Research with confidence
Consistent and reproducible results



Long-term and scalable supply
Recombinant technology



Success from the first experiment
Confirmed specificity



Ethical standards compliant
Animal-free production

Anti-Kallikrein 14 antibody [EPR7209] - BSA and Azide free (ab248246)

Please note: All products are "FOR RESEARCH USE ONLY. NOT FOR USE IN DIAGNOSTIC PROCEDURES"

Our Abpromise to you: Quality guaranteed and expert technical support

- Replacement or refund for products not performing as stated on the datasheet
- Valid for 12 months from date of delivery
- Response to your inquiry within 24 hours
- We provide support in Chinese, English, French, German, Japanese and Spanish
- Extensive multi-media technical resources to help you
- We investigate all quality concerns to ensure our products perform to the highest standards

If the product does not perform as described on this datasheet, we will offer a refund or replacement. For full details of the Abpromise, please visit <https://www.abcam.com/abpromise> or contact our technical team.

Terms and conditions

- Guarantee only valid for products bought direct from Abcam or one of our authorized distributors