

Product datasheet

Anti-Kallikrein 5 antibody ab28565

★★★★★ [1 Abreviews](#) [5 References](#) [1 Image](#)

Overview

Product name	Anti-Kallikrein 5 antibody
Description	Rabbit polyclonal to Kallikrein 5
Host species	Rabbit
Specificity	This antibody reacts with Kallikrein 5, but does not react with the other Kallikreins (1-7 and 9-15).
Tested applications	Suitable for: WB
Species reactivity	Reacts with: Recombinant fragment
Immunogen	Synthetic peptide based on the Kallikrein loop area of human Kallikrein 5. Read Abcam's proprietary immunogen policy (Peptide available as ab41423 .)
General notes	<p>The Life Science industry has been in the grips of a reproducibility crisis for a number of years. Abcam is leading the way in addressing this with our range of recombinant monoclonal antibodies and knockout edited cell lines for gold-standard validation. Please check that this product meets your needs before purchasing.</p> <p>If you have any questions, special requirements or concerns, please send us an inquiry and/or contact our Support team ahead of purchase. Recommended alternatives for this product can be found below, along with publications, customer reviews and Q&As</p>

Properties

Form	Liquid
Storage instructions	Shipped at 4°C. Upon delivery aliquot and store at -20°C. Avoid freeze / thaw cycles.
Storage buffer	Preservative: 0.05% Sodium azide Constituent: 50% Glycerol
Purity	Immunogen affinity purified
Clonality	Polyclonal
Isotype	IgG

Applications

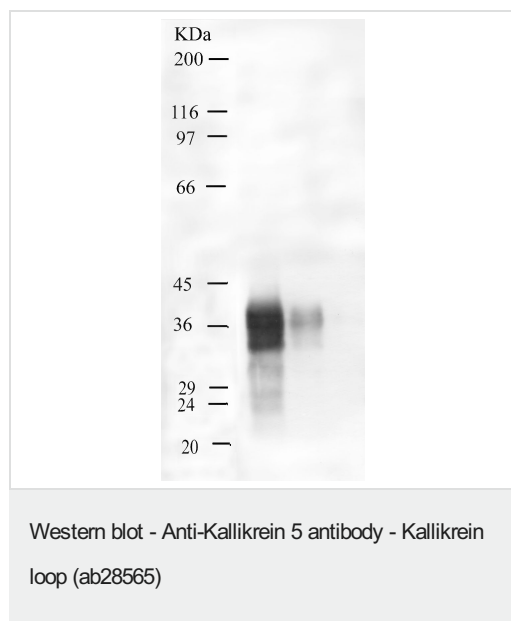
The Abpromise guarantee Our [Abpromise guarantee](#) covers the use of ab28565 in the following tested applications. The application notes include recommended starting dilutions; optimal dilutions/concentrations should be determined by the end user.

Application	Abreviews	Notes
WB		1/1000 - 1/5000. Predicted molecular weight: 32 kDa. 1/1000 (when using colorimetric substrates such as BCIP/NBT)- 1/5000 (chemiluminescent substrates). Dilution optimised using Chromogenic detection.

Target

Function	May be involved in desquamation.
Tissue specificity	Expressed in skin, breast, brain and testis. Expressed at the stratum granulosum of palmar skin.
Sequence similarities	Belongs to the peptidase S1 family. Kallikrein subfamily. Contains 1 peptidase S1 domain.
Cellular localization	Secreted.

Images



All lanes : Anti-Kallikrein 5 antibody (ab28565) at 1/1000 dilution

Lane 1 : Kallikrein 5 at 0.05 µg

Lane 2 : Kallikrein 5 at 0.01 µg

Lane 3 : Kallikrein 5 at 0.001 µg

Predicted band size: 32 kDa

Observed band size: 38 kDa

Please note: All products are "FOR RESEARCH USE ONLY. NOT FOR USE IN DIAGNOSTIC PROCEDURES"

Our Abpromise to you: Quality guaranteed and expert technical support

- Replacement or refund for products not performing as stated on the datasheet
- Valid for 12 months from date of delivery
- Response to your inquiry within 24 hours
- We provide support in Chinese, English, French, German, Japanese and Spanish
- Extensive multi-media technical resources to help you
- We investigate all quality concerns to ensure our products perform to the highest standards

If the product does not perform as described on this datasheet, we will offer a refund or replacement. For full details of the Abpromise, please visit <https://www.abcam.com/abpromise> or contact our technical team.

Terms and conditions

- Guarantee only valid for products bought direct from Abcam or one of our authorized distributors