




## Product datasheet

# Anti-Kallikrein 6 antibody ab191281

2 Images

### Overview

|                            |   |
|----------------------------|---|
| <b>Product name</b>        | Anti-Kallikrein 6 antibody  |
| <b>Description</b>         | Goat polyclonal to Kallikrein 6   |
| <b>Host species</b>        | Goat  |
| <b>Tested applications</b> | <b>Suitable for:</b> IHC-P  |
| <b>Species reactivity</b>  | <b>Reacts with:</b> Human<br><b>Predicted to work with:</b> Monkey, Gorilla    |
| <b>Immunogen</b>           | Synthetic peptide corresponding to Human Kallikrein 6 aa 100-200 (internal sequence) (Cysteine residue).<br>Database link: <a href="#">Q92876</a><br> <a href="#">Run BLAST with</a>  <a href="#">Run BLAST with</a>  |
| <b>Positive control</b>    | Human prostate and kidney tissues.  |
| <b>General notes</b>       | <p>Preliminary experiments gave an approx 50kDa band in Human Ovary lysates after 0.5 µg/ml antibody staining. Please note that currently we cannot find an explanation in the literature for the band we observe given the calculated size of 26.9kDa according to NP_002765.1. The 50kDa band was successfully blocked by incubation with the immunizing peptide.</p> <p>The Life Science industry has been in the grips of a reproducibility crisis for a number of years. Abcam is leading the way in addressing this with our range of recombinant monoclonal antibodies and knockout edited cell lines for gold-standard validation. Please check that this product meets your needs before purchasing.</p> <p>If you have any questions, special requirements or concerns, please send us an inquiry and/or contact our Support team ahead of purchase. Recommended alternatives for this product can be found below, along with publications, customer reviews and Q&amp;As</p> |

### Properties

|                             |   |
|-----------------------------|---|
| <b>Form</b>                 | Liquid  |
| <b>Storage instructions</b> | Shipped at 4°C. Store at +4°C short term (1-2 weeks). Upon delivery aliquot. Store at -20°C long term. Avoid freeze / thaw cycle. |
| <b>Storage buffer</b>       | pH: 7.30<br>Preservative: 0.02% Sodium azide<br>Constituents: 0.5% BSA, 99% Tris buffered saline                                  |

|                  |                             |
|------------------|-----------------------------|
| <b>Purity</b>    | Immunogen affinity purified |
| <b>Clonality</b> | Polyclonal                  |
| <b>Isotype</b>   | IgG                         |

## Applications

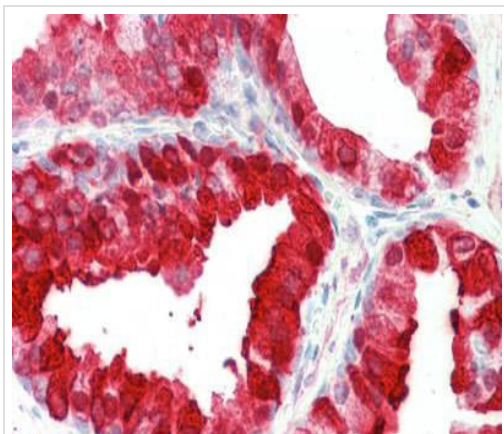
**The Abpromise guarantee** Our **Abpromise guarantee** covers the use of ab191281 in the following tested applications. The application notes include recommended starting dilutions; optimal dilutions/concentrations should be determined by the end user.

| Application | Abreviews | Notes                           |
|-------------|-----------|---------------------------------|
| IHC-P       |           | Use a concentration of 5 µg/ml. |

## Target

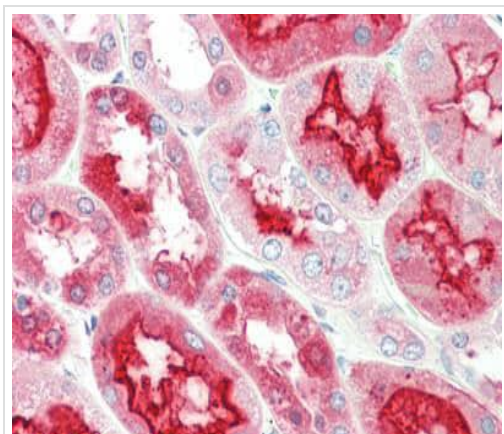
|   |  |
|---|--|
| <b>Function</b>                         | Serine protease which exhibits a preference for Arg over Lys in the substrate P1 position and for Ser or Pro in the P2 position. Shows activity against amyloid precursor protein, myelin basic protein, gelatin, casein and extracellular matrix proteins such as fibronectin, laminin, vitronectin and collagen. Degrades alpha-synuclein and prevents its polymerization, indicating that it may be involved in the pathogenesis of Parkinson disease and other synucleinopathies. May be involved in regulation of axon outgrowth following spinal cord injury. Tumor cells treated with a neutralizing KLK6 antibody migrate less than control cells, suggesting a role in invasion and metastasis.   |
| <b>Tissue specificity</b>               | In fluids, highest levels found in milk of lactating women followed by cerebrospinal fluid, nipple aspirate fluid and breast cyst fluid. Also found in serum, seminal plasma and some amniotic fluids and breast tumor cytosolic extracts. Not detected in urine. At the tissue level, highest concentrations found in glandular tissues such as salivary glands followed by lung, colon, fallopian tube, placenta, breast, pituitary and kidney. Not detected in skin, spleen, bone, thyroid, heart, ureter, liver, muscle, endometrium, testis, pancreas, seminal vesicle, ovary, adrenals and prostate. In brain, detected in gray matter neurons (at protein level). Colocalizes with pathological inclusions such as Lewy bodies and glial cytoplasmic inclusions. Overexpressed in primary breast tumors but not expressed in metastatic tumors. |
| <b>Sequence similarities</b>            | Belongs to the peptidase S1 family. Kallikrein subfamily.<br>Contains 1 peptidase S1 domain.   |
| <b>Post-translational modifications</b> | Inactivated by autolytic cleavage after Arg-80.  |
| <b>Cellular localization</b>            | Secreted. Nucleus > nucleolus. Cytoplasm. Mitochondrion. Microsome. In brain, detected in the nucleus of glial cells and in the nucleus and cytoplasm of neurons. Detected in the mitochondrial and microsomal fractions of HEK-293 cells and released into the cytoplasm following cell stress.   |

## Images



Immunohistochemical analysis of formalin-fixed, paraffin-embedded Human prostate tissue labeling Kallikrein 6 with ab191281 at 5 µg/ml.

Immunohistochemistry (Formalin/PFA-fixed paraffin-embedded sections) - Anti-Kallikrein 6 antibody (ab191281)



Immunohistochemical analysis of formalin-fixed, paraffin-embedded Human kidney tissue labeling Kallikrein 6 with ab191281 at 5 µg/ml.

Immunohistochemistry (Formalin/PFA-fixed paraffin-embedded sections) - Anti-Kallikrein 6 antibody (ab191281)

**Please note:** All products are "FOR RESEARCH USE ONLY. NOT FOR USE IN DIAGNOSTIC PROCEDURES"

### Our Abpromise to you: Quality guaranteed and expert technical support

- Replacement or refund for products not performing as stated on the datasheet
- Valid for 12 months from date of delivery
- Response to your inquiry within 24 hours
- We provide support in Chinese, English, French, German, Japanese and Spanish
- Extensive multi-media technical resources to help you

- We investigate all quality concerns to ensure our products perform to the highest standards

If the product does not perform as described on this datasheet, we will offer a refund or replacement. For full details of the Abpromise, please visit <https://www.abcam.com/abpromise> or contact our technical team.

### **Terms and conditions**

---

- Guarantee only valid for products bought direct from Abcam or one of our authorized distributors