



Product datasheet

Anti-Kallikrein 7/KLK7 antibody ab200745

[1 References](#) [1 Image](#)

Overview

Product name	Anti-Kallikrein 7/KLK7 antibody
Description	Rabbit polyclonal to Kallikrein 7/KLK7
Host species	Rabbit
Tested applications	Suitable for: WB
Species reactivity	Reacts with: Mouse, Rat, Human
Immunogen	<p>Synthetic peptide within Human Kallikrein 7/KLK7 aa 1-100. The exact immunogen sequence used to generate this antibody is proprietary information. If additional detail on the immunogen is needed to determine the suitability of the antibody for your needs, please contact our Scientific Support team to discuss your requirements.</p> <p>Database link: P49862</p> <p style="text-align: right;">  Run BLAST with  Run BLAST with </p>
Positive control	HEK293T, sp2/0 and PC12 whole cell lysate
General notes	<p>The Life Science industry has been in the grips of a reproducibility crisis for a number of years. Abcam is leading the way in addressing this with our range of recombinant monoclonal antibodies and knockout edited cell lines for gold-standard validation. Please check that this product meets your needs before purchasing.</p> <p>If you have any questions, special requirements or concerns, please send us an inquiry and/or contact our Support team ahead of purchase. Recommended alternatives for this product can be found below, along with publications, customer reviews and Q&As</p>

Properties

Form	Liquid
Storage instructions	Shipped at 4°C. Store at +4°C short term (1-2 weeks). Upon delivery aliquot. Store at -20°C long term. Avoid freeze / thaw cycle.
Storage buffer	<p>pH: 7.20</p> <p>Preservative: 0.097% Sodium azide</p> <p>Constituent: 99% PBS</p>
Purity	Immunogen affinity purified
Purification notes	Purity is > 95% (by SDS-PAGE).
Clonality	Polyclonal

Isotype

IgG

Applications

The Abpromise guarantee

Our **Abpromise guarantee** covers the use of ab200745 in the following tested applications.

The application notes include recommended starting dilutions; optimal dilutions/concentrations should be determined by the end user.

Application	Abreviews	Notes
WB		1/500 - 1/1000. Predicted molecular weight: 28 kDa.

Target

Function

May catalyze the degradation of intercellular cohesive structures in the cornified layer of the skin in the continuous shedding of cells from the skin surface. Specific for amino acid residues with aromatic side chains in the P1 position. SCCE cleaves insulin B chain at '6-Leu-Cys-7', '16-Tyr-Leu-17', '25-Phe-Tyr-26' and '26-Tyr-Thr-27'. Could play a role in the activation of precursors to inflammatory cytokines.

Tissue specificity

Abundantly expressed in the skin and is expressed by keratinocytes in the epidermis. Also expressed in the brain, mammary gland, cerebellum, spinal cord and kidney. Lower levels in salivary glands, uterus, thymus, thyroid, placenta, trachea and testis. Up-regulated in ovarian carcinoma, especially late-stage serous carcinoma, compared with normal ovaries and benign adenomas (at protein level).

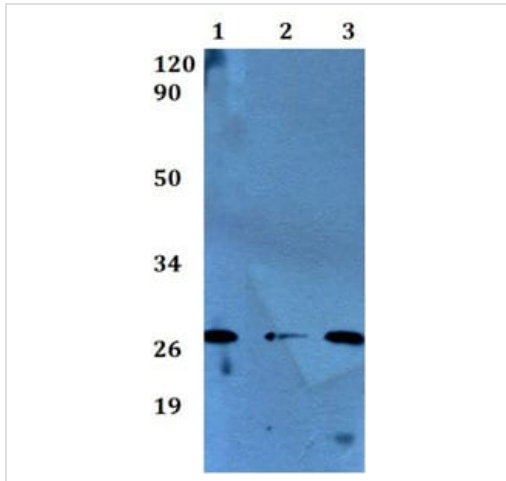
Sequence similarities

Belongs to the peptidase S1 family. Kallikrein subfamily.
Contains 1 peptidase S1 domain.

Cellular localization

Secreted. In ovarian carcinoma, secreted and also observed at the apical membrane and in cytoplasm at the invasive front.

Images



Western blot - Anti-Kallikrein 7/KLK7 antibody
(ab200745)

All lanes : Anti-Kallikrein 7/KLK7 antibody (ab200745)

Lane 1 : HEK293T whole cell lysate

Lane 2 : sp2/0 whole cell lysate

Lane 3 : PC12 whole cell lysate

Predicted band size: 28 kDa

Please note: All products are "FOR RESEARCH USE ONLY. NOT FOR USE IN DIAGNOSTIC PROCEDURES"

Our Abpromise to you: Quality guaranteed and expert technical support

- Replacement or refund for products not performing as stated on the datasheet
- Valid for 12 months from date of delivery
- Response to your inquiry within 24 hours
- We provide support in Chinese, English, French, German, Japanese and Spanish
- Extensive multi-media technical resources to help you
- We investigate all quality concerns to ensure our products perform to the highest standards

If the product does not perform as described on this datasheet, we will offer a refund or replacement. For full details of the Abpromise, please visit <https://www.abcam.com/abpromise> or contact our technical team.

Terms and conditions

- Guarantee only valid for products bought direct from Abcam or one of our authorized distributors