

## Product datasheet

# Anti-Kallikrein 8/KLK8 antibody [EPR5752(2)] ab150395

Recombinant RabMAb

[6 References](#) [3 Images](#)

### Overview

|                            |   |
|----------------------------|---|
| <b>Product name</b>        | Anti-Kallikrein 8/KLK8 antibody [EPR5752(2)]  |
| <b>Description</b>         | Rabbit monoclonal [EPR5752(2)] to Kallikrein 8/KLK8   |
| <b>Host species</b>        | Rabbit  |
| <b>Tested applications</b> | <b>Suitable for:</b> WB, IHC-P<br><b>Unsuitable for:</b> Flow Cyt or ICC/IF   |
| <b>Species reactivity</b>  | <b>Reacts with:</b> Human   |
| <b>Immunogen</b>           | Synthetic peptide within Human Kallikrein 8/KLK8 aa 200-300 (C terminal). The exact sequence is proprietary.  |
| <b>Positive control</b>    | Jurkat, Human fetal brain, A431, and HeLa whole cell lysate ( <a href="#">ab150035</a> ). Human endometrial carcinoma tissue.   |
| <b>General notes</b>       | <p>This product is a recombinant monoclonal antibody, which offers several advantages including:</p> <ul style="list-style-type: none"><li>- High batch-to-batch consistency and reproducibility</li><li>- Improved sensitivity and specificity</li><li>- Long-term security of supply</li><li>- Animal-free production</li></ul> <p>For more information <a href="#">see here</a>.</p> <p>Our RabMAb<sup>®</sup> technology is a patented hybridoma-based technology for making rabbit monoclonal antibodies. For details on our patents, please refer to <a href="#">RabMAb<sup>®</sup> patents</a>.</p> <p>Mouse, Rat: We have preliminary internal testing data to indicate this antibody may not react with these species. Please contact us for more information.</p> |

### Properties

|                             |  |
|-----------------------------|--|
| <b>Form</b>                 | Liquid   |
| <b>Storage instructions</b> | Shipped at 4°C. Upon delivery aliquot and store at -20°C. Avoid freeze / thaw cycles.  |
| <b>Storage buffer</b>       | pH: 7.2<br>Preservative: 0.01% Sodium azide<br>Constituents: 9% PBS, 40% Glycerol (glycerin, glycerine), 0.05% BSA, 50% Tissue culture supernatant |
| <b>Purity</b>               | Protein A purified   |

|                     |            |
|---------------------|------------|
| <b>Clonality</b>    | Monoclonal |
| <b>Clone number</b> | EPR5752(2) |
| <b>Isotype</b>      | IgG        |

## Applications

**The Abpromise guarantee** Our **Abpromise guarantee** covers the use of ab150395 in the following tested applications. The application notes include recommended starting dilutions; optimal dilutions/concentrations should be determined by the end user.

| Application  | Abreviews | Notes   |
|--------------|-----------|---|
| <b>WB</b>    |           | 1/1000 - 1/10000. Predicted molecular weight: 28 kDa.   |
| <b>IHC-P</b> |           | 1/50 - 1/100. Perform heat mediated antigen retrieval before commencing with IHC staining protocol. |

**Application notes** Is unsuitable for Flow Cyt or ICC/IF.

## Target

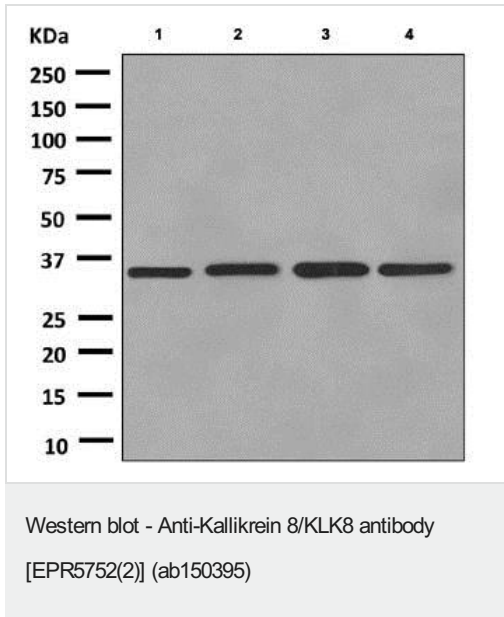
**Function** Serine protease which is capable of degrading a number of proteins such as casein, fibrinogen, kininogen, fibronectin and collagen type IV. Also cleaves L1CAM in response to increased neural activity. Induces neurite outgrowth and fasciculation of cultured hippocampal neurons. Plays a role in the formation and maturation of orphan and small synaptic boutons in the Schaffer-collateral pathway, regulates Schaffer-collateral long-term potentiation in the hippocampus and is required for memory acquisition and synaptic plasticity. Involved in skin desquamation and keratinocyte proliferation. Plays a role in the secondary phase of pathogenesis following spinal cord injury.

**Tissue specificity** Isoform 1 is predominantly expressed in the pancreas. Isoform 2 is expressed in adult brain and hippocampus. Isoform 1 and isoform 2 are found in fetal brain and placenta. Detected in salivary gland, uterus, thymus, breast, testis and kidney but not in spleen, liver, lung or normal ovarian tissue. Displays an 11.5-fold increase in Alzheimer disease hippocampus compared to controls and is overexpressed in some ovarian carcinomas. Expressed at low levels in normal skin while high levels are found in psoriasis vulgaris, seborrheic keratosis, lichen planus and squamous cell carcinoma skin samples. Expressed in the keratinocytes.

**Sequence similarities** Belongs to the peptidase S1 family. Kallikrein subfamily. Contains 1 peptidase S1 domain.

**Cellular localization** Secreted. Cytoplasm. Shows a cytoplasmic distribution in the keratinocytes.

## Images



**All lanes :** Anti-Kallikrein 8/CLK8 antibody [EPR5752(2)] (ab150395) at 1/1000 dilution

**Lane 1 :** Jurkat cell lysate

**Lane 2 :** Human fetal brain cell lysate

**Lane 3 :** A431 cell lysate

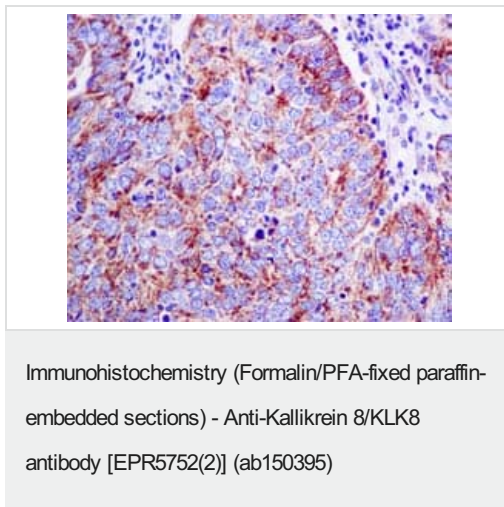
**Lane 4 :** HeLa cell lysate

Lysates/proteins at 10 µg per lane.

**Secondary**

**All lanes :** HRP labelled goat anti-rabbit

**Predicted band size:** 28 kDa



Immunohistochemical analysis of paraffin-embedded Human endometrial carcinoma tissue labelling Kallikrein 8/CLK8 with ab150395 at 1/50 dilution.

Perform heat mediated antigen retrieval before commencing with IHC staining protocol.

### Why choose a recombinant antibody?



**Research with confidence**  
Consistent and reproducible results



**Long-term and scalable supply**  
Recombinant technology



**Success from the first experiment**  
Confirmed specificity



**Ethical standards compliant**  
Animal-free production

Anti-Kallikrein 8/KLK8 antibody [EPR5752(2)]  
(ab150395)

**Please note:** All products are "FOR RESEARCH USE ONLY. NOT FOR USE IN DIAGNOSTIC PROCEDURES"

### Our Abpromise to you: Quality guaranteed and expert technical support

---

- Replacement or refund for products not performing as stated on the datasheet
- Valid for 12 months from date of delivery
- Response to your inquiry within 24 hours
- We provide support in Chinese, English, French, German, Japanese and Spanish
- Extensive multi-media technical resources to help you
- We investigate all quality concerns to ensure our products perform to the highest standards

If the product does not perform as described on this datasheet, we will offer a refund or replacement. For full details of the Abpromise, please visit <https://www.abcam.com/abpromise> or contact our technical team.

### Terms and conditions

---

- Guarantee only valid for products bought direct from Abcam or one of our authorized distributors