

## Product datasheet

# Anti-Kappa light chain antibody [HP6053-L1C1] ab200546

[2 Images](#)

### Overview

---

<b>Product name</b>	Anti-Kappa light chain antibody [HP6053-L1C1]
<b>Description</b>	Mouse monoclonal [HP6053-L1C1] to Kappa light chain
<b>Host species</b>	Mouse
<b>Tested applications</b>	<b>Suitable for:</b> IHC-P, WB
<b>Species reactivity</b>	<b>Reacts with:</b> Human
<b>Immunogen</b>	<b>This product was produced with the following immunogens:</b> Tissue, cells or virus corresponding to Human Kappa light chain. human B-lymphoma cells (L1C1) Database link: <a href="#">P01834</a>  Full length native protein (purified) corresponding to Human Kappa light chain. Purified human Ig kappa chain (HP6053)
<b>Positive control</b>	293T, Raji or hPBL cells. Tonsil or spleen.
<b>General notes</b>	<p>The Life Science industry has been in the grips of a reproducibility crisis for a number of years. Abcam is leading the way in addressing this with our range of recombinant monoclonal antibodies and knockout edited cell lines for gold-standard validation. Please check that this product meets your needs before purchasing.</p> <p>If you have any questions, special requirements or concerns, please send us an inquiry and/or contact our Support team ahead of purchase. Recommended alternatives for this product can be found below, along with publications, customer reviews and Q&amp;As</p>

### Properties

---

<b>Form</b>	Liquid
<b>Storage instructions</b>	Shipped at 4°C. Store at +4°C short term (1-2 weeks). Upon delivery aliquot. Store at -20°C long term. Avoid freeze / thaw cycle.
<b>Storage buffer</b>	pH: 7.2 Preservative: 0.05% Sodium azide Constituents: 99% PBS, 0.05% BSA
<b>Purity</b>	Protein A purified
<b>Clonality</b>	Monoclonal

**Clone number** HP6053-L1C1  
**Isotype** IgG1  
**Light chain type** kappa

## Applications

**The Abpromise guarantee** Our **Abpromise guarantee** covers the use of ab200546 in the following tested applications. The application notes include recommended starting dilutions; optimal dilutions/concentrations should be determined by the end user.

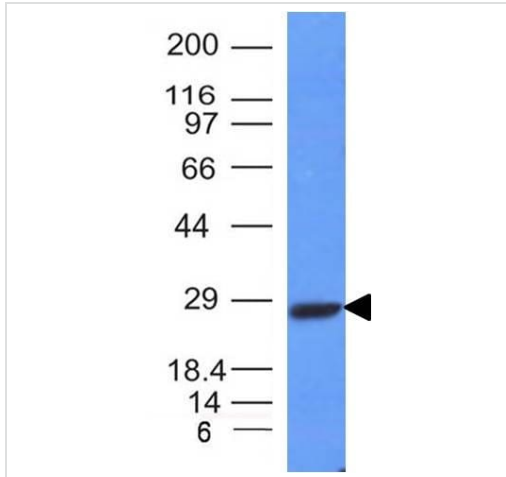
Application	Abreviews	Notes
IHC-P		Use a concentration of 1 - 2 µg/ml. Perform heat mediated antigen retrieval with Tris/EDTA buffer pH 9.0 before commencing with IHC staining protocol.
WB		Use a concentration of 1 - 2 µg/ml. Predicted molecular weight: 25 kDa.

## Target

**Relevance** Immunoglobulins belong to a group of related glyco proteins which make up 20% of serum proteins. Antigens and immunoglobulins react to confer immunity to individuals. Immunoglobulins have similar structures of two identical heavy chains and two identical light chains. Both the heavy chains and the light chains are divided into constant and variable regions. The constant regions have the same amino acid sequences between all the immunoglobulin classes. The variable regions have approximately 110 amino acids with high sequence variability. The amino acid sequence of the heavy chain determines the class of an immunoglobulin. The five types of immunoglobulin heavy chains are known as: IgG, IgA, IgM, IgD, and IgE. IgG is divided into four subclasses, and IgA is divided into two subclasses. In serum IgA and IgG are monomers with a single 4 polypeptide unit; while, IgM is a pentamer. IgA may also form polymers. Kappa light chain antibody can be used for the identification of leukemias, plasmacytomas and certain non Hodgkin's lymphomas. Kappa light chain contains one immunoglobulin like domain. The EU sequence has the INV allotypic marker, Ala 45 and Val 83. The ROY sequence has the INV allotypic marker, Ala 45 and Leu 83.

**Cellular localization** Cytoplasmic and Secreted

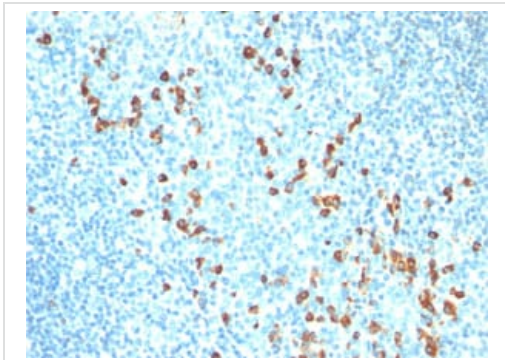
## Images



Western blot - Anti-Kappa light chain antibody  
[HP6053-L1C1] (ab200546)

Anti-Kappa light chain antibody [HP6053-L1C1] (ab200546) + Raji  
cell lysate at 10 µg

**Predicted band size:** 25 kDa



Immunohistochemistry (Formalin/PFA-fixed paraffin-  
embedded sections) - Anti-Kappa light chain  
antibody [HP6053-L1C1] (ab200546)

Immunohistochemical analysis of formalin fixed paraffin embedded  
human tonsil tissue labeling Kappa light chain with ab200546 at  
1 µg/mL.

**Please note:** All products are "FOR RESEARCH USE ONLY. NOT FOR USE IN DIAGNOSTIC PROCEDURES"

### Our Abpromise to you: Quality guaranteed and expert technical support

- Replacement or refund for products not performing as stated on the datasheet
- Valid for 12 months from date of delivery
- Response to your inquiry within 24 hours

- We provide support in Chinese, English, French, German, Japanese and Spanish
- Extensive multi-media technical resources to help you
- We investigate all quality concerns to ensure our products perform to the highest standards

If the product does not perform as described on this datasheet, we will offer a refund or replacement. For full details of the Abpromise, please visit <https://www.abcam.com/abpromise> or contact our technical team.

### **Terms and conditions**

---

- Guarantee only valid for products bought direct from Abcam or one of our authorized distributors