

Product datasheet

Anti-KAT8 / MYST1 / MOF antibody [EPR15803] ab200660

Recombinant RabMAb

★★★★★ **3 Abreviews** **7 References** [10 Images](#)

Overview

Product name	Anti-KAT8 / MYST1 / MOF antibody [EPR15803]
Description	Rabbit monoclonal [EPR15803] to KAT8 / MYST1 / MOF
Host species	Rabbit
Tested applications	Suitable for: IHC-P, WB, ICC/IF, IP, Flow Cyt (Intra)
Species reactivity	Reacts with: Mouse, Rat, Human
Immunogen	Synthetic peptide. This information is proprietary to Abcam and/or its suppliers.
Positive control	WB: HepG2, HeLa, RAW 264.7 and PC-12 whole cell lysates; Human fetal kidney lysate. IHC-P: Human cervix carcinoma and rat kidney tissues. ICC/IF: HeLa and HepG2 cells. IP: HeLa whole cell lysate.
General notes	<p>This product is a recombinant monoclonal antibody, which offers several advantages including:</p> <ul style="list-style-type: none"> - High batch-to-batch consistency and reproducibility - Improved sensitivity and specificity - Long-term security of supply - Animal-free production <p>For more information see here.</p> <p>Our RabMAb[®] technology is a patented hybridoma-based technology for making rabbit monoclonal antibodies. For details on our patents, please refer to RabMAb[®] patents.</p>

Properties

Form	Liquid
Storage instructions	Shipped at 4°C. Store at +4°C short term (1-2 weeks). Upon delivery aliquot. Store at -20°C long term. Avoid freeze / thaw cycle.
Storage buffer	<p>pH: 7.2</p> <p>Preservative: 0.01% Sodium azide</p> <p>Constituents: 59% PBS, 40% Glycerol, 0.05% BSA</p>
Purity	Protein A purified
Clonality	Monoclonal

Clone number	EPR15803
Isotype	IgG

Applications

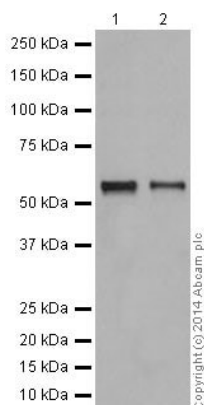
The Abpromise guarantee Our **Abpromise guarantee** covers the use of ab200660 in the following tested applications. The application notes include recommended starting dilutions; optimal dilutions/concentrations should be determined by the end user.

Application	Abreviews	Notes
IHC-P		1/500. Perform heat mediated antigen retrieval with Tris/EDTA buffer pH 9.0 before commencing with IHC staining protocol.
WB	★★★★★ (1)	1/1000. Detects a band of approximately 52 kDa (predicted molecular weight: 52 kDa).
ICC/IF		1/2000.
IP		1/170.
Flow Cyt (Intra)		1/200.

Target

Function	Histone acetyltransferase which may be involved in transcriptional activation. May influence the function of ATM.
Sequence similarities	Belongs to the MYST (SAS/MOZ) family. Contains 1 C2HC-type zinc finger. Contains 1 chromo domain.
Cellular localization	Nucleus.

Images



Western blot - Anti-KAT8 / MYST1 / MOF antibody [EPR15803] (ab200660)

All lanes : Anti-KAT8 / MYST1 / MOF antibody [EPR15803] (ab200660) at 1/5000 dilution

Lane 1 : HepG2 (Human liver hepatocellular carcinoma) whole cell lysate

Lane 2 : HeLa (Human epithelial cells from cervix adenocarcinoma) whole cell lysate

Lysates/proteins at 20 µg per lane.

Secondary

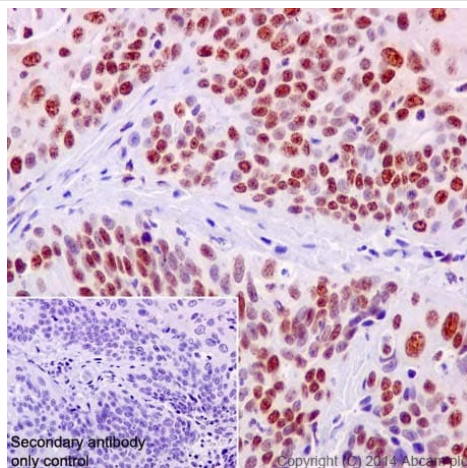
All lanes : Goat Anti-Rabbit IgG, (H+L), Peroxidase conjugated at 1/1000 dilution

Predicted band size: 52 kDa

Observed band size: 52 kDa

Exposure time: 3 minutes

Blocking/Dilution buffer: 5% NFDM/TBST.



Immunohistochemistry (Formalin/PFA-fixed paraffin-embedded sections) - Anti-KAT8 / MYST1 / MOF antibody [EPR15803] (ab200660)

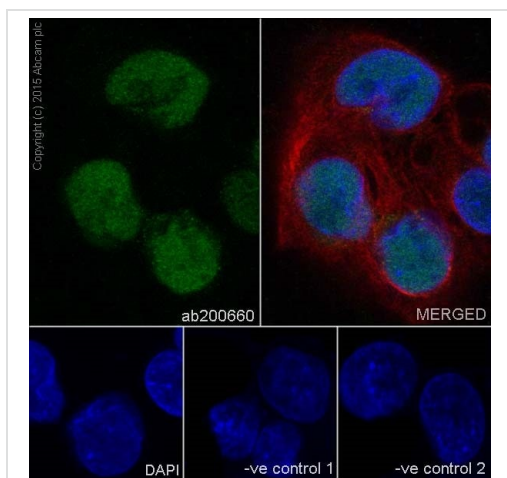
Immunohistochemical analysis of paraffin-embedded human cervix carcinoma tissue labeling KAT8 / MYST1 / MOF with ab200660 at 1/500 dilution, followed by Goat Anti-Rabbit IgG H&L (HRP) ([ab97051](#)) secondary antibody at 1/500 dilution.

Nuclear staining on human cervix carcinoma tissue is observed.

Counter stained with Hematoxylin.

Secondary antibody only control: Used PBS instead of primary antibody, secondary antibody is Goat Anti-Rabbit IgG H&L (HRP) ([ab97051](#)) at 1/500 dilution.

Perform heat mediated antigen retrieval with EDTA buffer pH 9 before commencing with IHC staining protocol.



Immunocytochemistry/ Immunofluorescence - Anti-KAT8 / MYST1 / MOF antibody [EPR15803] (ab200660)

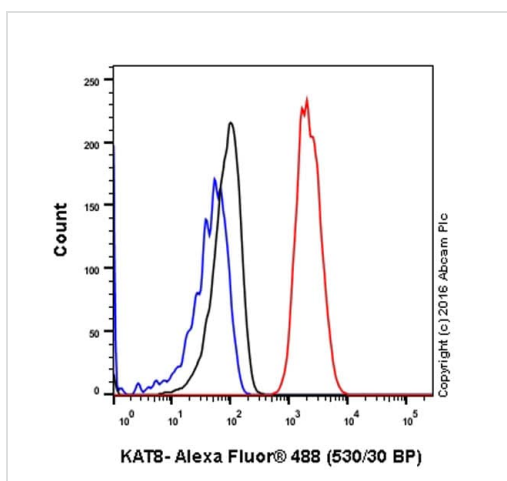
Immunofluorescent analysis of 4% paraformaldehyde-fixed, 0.1% Triton X-100 permeabilized HepG2 (Human liver hepatocellular carcinoma) cells labeling KAT8 / MYST1 / MOF with ab200660 at 1/2000 dilution, followed by Goat Anti-Rabbit IgG (Alexa Fluor® 488) ([ab150077](#)) secondary antibody at 1/500 dilution (green). Confocal image showing nuclear staining on HepG2 cell line. The nuclear counter stain is DAPI (blue).

Tubulin is detected with Anti-alpha Tubulin mouse MAb ([ab7291](#)) at 1/1000 dilution, followed by Goat Anti-Mouse IgG H&L (Alexa Fluor® 594) ([ab150120](#)) secondary antibody at 1/500 dilution (red).

The negative controls are as follows:

-ve control 1: ab200660 at 1/2000 dilution, followed by Goat Anti-Mouse IgG H&L (Alexa Fluor® 594) ([ab150120](#)) secondary at 1/500 dilution.

-ve control 2: Anti-alpha Tubulin mouse MAb ([ab7291](#)) at 1/1000 dilution, followed by Goat Anti-Rabbit IgG H&L (Alexa Fluor® 488) ([ab150077](#)) secondary at 1/500 dilution.

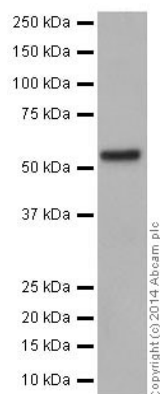


Flow Cytometry (Intracellular) - Anti-KAT8 / MYST1 / MOF antibody [EPR15803] (ab200660)

ab200660 staining KAT8 in the human cell line HepG2 (human hepatocellular carcinoma) by intracellular flow cytometry. Cells were fixed with 4% paraformaldehyde and the sample was incubated with the primary antibody at a dilution of 1/200. A goat anti rabbit IgG (Alexa Fluor® 488) at a dilution of 1/2000 was used as the secondary antibody.

Isotype control: Rabbit monoclonal IgG (Black)

Unlabelled control: Cell without incubation with primary antibody and secondary antibody (Blue)



Western blot - Anti-KAT8 / MYST1 / MOF antibody [EPR15803] (ab200660)

Anti-KAT8 / MYST1 / MOF antibody [EPR15803] (ab200660) at 1/1000 dilution + Human fetal kidney lysate at 10 µg

Secondary

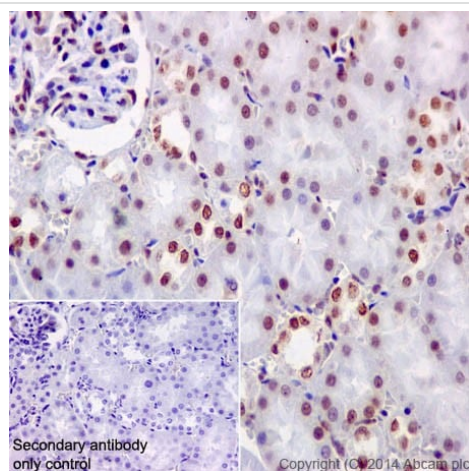
Anti-Rabbit IgG (HRP), specific to the non-reduced form of IgG at 1/1000 dilution

Predicted band size: 52 kDa

Observed band size: 52 kDa

Exposure time: 3 minutes

Blocking/Dilution buffer: 5% NFDm/TBST.



Immunohistochemistry (Formalin/PFA-fixed paraffin-embedded sections) - Anti-KAT8 / MYST1 / MOF antibody [EPR15803] (ab200660)

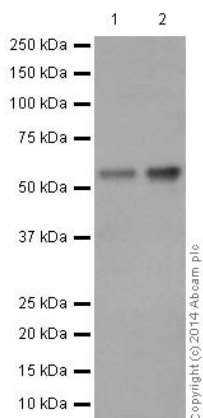
Immunohistochemical analysis of paraffin-embedded rat kidney tissue labeling KAT8 / MYST1 / MOF with ab200660 at 1/500 dilution, followed by Goat Anti-Rabbit IgG H&L (HRP) ([ab97051](#)) secondary antibody at 1/500 dilution.

Nuclear staining on rat kidney tissue is observed.

Counter stained with Hematoxylin.

Secondary antibody only control: Used PBS instead of primary antibody, secondary antibody is Goat Anti-Rabbit IgG H&L (HRP) ([ab97051](#)) at 1/500 dilution.

Perform heat mediated antigen retrieval with EDTA buffer pH 9 before commencing with IHC staining protocol.



Western blot - Anti-KAT8 / MYST1 / MOF antibody [EPR15803] (ab200660)

All lanes : Anti-KAT8 / MYST1 / MOF antibody [EPR15803] (ab200660) at 1/1000 dilution

Lane 1 : RAW 264.7 (Mouse macrophage cells transformed with Abelson murine leukemia virus) whole cell lysate

Lane 2 : PC-12 (Rat adrenal gland pheochromocytoma) whole cell lysate

Lysates/proteins at 10 µg per lane.

Secondary

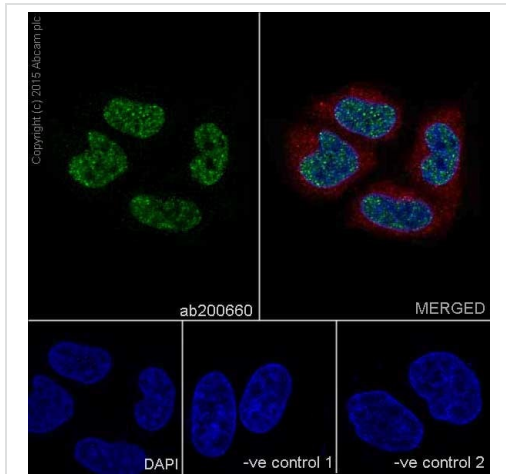
All lanes : Goat Anti-Rabbit IgG, (H+L), Peroxidase conjugated at 1/1000 dilution

Predicted band size: 52 kDa

Observed band size: 52 kDa

Exposure time: 1 minute

Blocking/Dilution buffer: 5% NFDM/TBST.



Immunocytochemistry/ Immunofluorescence - Anti-KAT8 / MYST1 / MOF antibody [EPR15803] (ab200660)

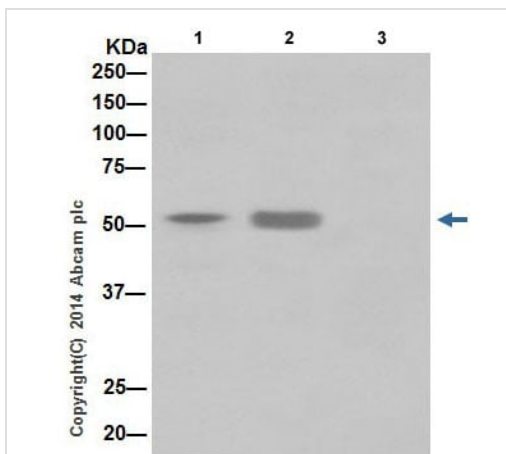
Immunofluorescent analysis of 4% paraformaldehyde-fixed, 0.1% Triton X-100 permeabilized HeLa (Human epithelial cells from cervix adenocarcinoma) cells labeling KAT8 / MYST1 / MOF with ab200660 at 1/2000 dilution, followed by Goat Anti-Rabbit IgG (Alexa Fluor® 488) ([ab150077](#)) secondary antibody at 1/500 dilution (green). Confocal image showing nuclear staining on HeLa cell line. The nuclear counter stain is DAPI (blue).

Tubulin is detected with Anti-alpha Tubulin mouse MAb ([ab7291](#)) at 1/1000 dilution, followed by Goat Anti-Mouse IgG H&L (Alexa Fluor® 594) ([ab150120](#)) secondary antibody at 1/500 dilution (red).

The negative controls are as follows:

-ve control 1: ab200660 at 1/2000 dilution, followed by Goat Anti-Mouse IgG H&L (Alexa Fluor® 594) ([ab150120](#)) secondary at 1/500 dilution.

-ve control 2: Anti-alpha Tubulin mouse MAb ([ab7291](#)) at 1/1000 dilution, followed by Goat Anti-Rabbit IgG H&L (Alexa Fluor® 488) ([ab150077](#)) secondary at 1/500 dilution.



Immunoprecipitation - Anti-KAT8 / MYST1 / MOF antibody [EPR15803] (ab200660)

KAT8 / MYST1 / MOF was immunoprecipitated from 1mg of HeLa (Human epithelial cells from cervix adenocarcinoma) whole cell lysate with ab200660 at 1/170 dilution.

Western blot was performed from the immunoprecipitate using ab200660 at 1/1000 dilution.

Anti-Rabbit IgG (HRP), specific to the non-reduced form of IgG, was used as secondary antibody at 1/1500 dilution.

Lane 1: HeLa whole cell lysate 10 µg (Input).

Lane 2: ab200660 IP in HeLa whole cell lysate.

Lane 3: Rabbit monoclonal IgG ([ab172730](#)) instead of ab200660 in HeLa whole cell extract.

Blocking and dilution buffer and concentration: 5% NFDM/TBST.

Why choose a recombinant antibody?



Research with confidence
Consistent and reproducible results



Long-term and scalable supply
Recombinant technology



Success from the first experiment
Confirmed specificity



Ethical standards compliant
Animal-free production

Anti-KAT8 / MYST1 / MOF antibody [EPR15803]
(ab200660)

Please note: All products are "FOR RESEARCH USE ONLY. NOT FOR USE IN DIAGNOSTIC PROCEDURES"

Our Abpromise to you: Quality guaranteed and expert technical support

- Replacement or refund for products not performing as stated on the datasheet
- Valid for 12 months from date of delivery
- Response to your inquiry within 24 hours
- We provide support in Chinese, English, French, German, Japanese and Spanish
- Extensive multi-media technical resources to help you
- We investigate all quality concerns to ensure our products perform to the highest standards

If the product does not perform as described on this datasheet, we will offer a refund or replacement. For full details of the Abpromise, please visit <https://www.abcam.com/abpromise> or contact our technical team.

Terms and conditions

- Guarantee only valid for products bought direct from Abcam or one of our authorized distributors