

## Product datasheet

# Anti-KAT9 / Elp3 antibody [EPR18472] ab190907

Recombinant RabMAb

[6 References](#) [7 Images](#)

### Overview

<b>Product name</b>	Anti-KAT9 / Elp3 antibody [EPR18472]
<b>Description</b>	Rabbit monoclonal [EPR18472] to KAT9 / Elp3
<b>Host species</b>	Rabbit
<b>Tested applications</b>	<b>Suitable for:</b> IP, ICC/IF, WB
<b>Species reactivity</b>	<b>Reacts with:</b> Mouse, Rat, Human
<b>Immunogen</b>	Recombinant fragment. This information is proprietary to Abcam and/or its suppliers.
<b>Positive control</b>	WB: HeLa, Jurkat, 293, HepG2, MCF7, C6, RAW264.7, PC-12 and NIH/3T3 whole cell lysates; Human fetal brain, fetal heart and fetal kidney lysates; Mouse and rat brain, heart, kidney and spleen lysates. ICC/IF: HeLa cells. IP: MCF7 whole cell lysate.
<b>General notes</b>	<p>This product is a recombinant monoclonal antibody, which offers several advantages including:</p> <ul style="list-style-type: none"><li>- High batch-to-batch consistency and reproducibility</li><li>- Improved sensitivity and specificity</li><li>- Long-term security of supply</li><li>- Animal-free production</li></ul> <p>For more information <a href="#">see here</a>.</p> <p>Our RabMAb<sup>®</sup> technology is a patented hybridoma-based technology for making rabbit monoclonal antibodies. For details on our patents, please refer to <a href="#">RabMAb<sup>®</sup> patents</a>.</p>

### Properties

<b>Form</b>	Liquid
<b>Storage instructions</b>	Shipped at 4°C. Store at +4°C short term (1-2 weeks). Upon delivery aliquot. Store at -20°C long term. Avoid freeze / thaw cycle.
<b>Storage buffer</b>	pH: 7.2 Preservative: 0.01% Sodium azide Constituents: 59% PBS, 40% Glycerol (glycerin, glycerine), 0.05% BSA
<b>Purity</b>	Protein A purified
<b>Clonality</b>	Monoclonal
<b>Clone number</b>	EPR18472

Isotype

IgG

## Applications

### The Abpromise guarantee

Our **Abpromise guarantee** covers the use of ab190907 in the following tested applications.

The application notes include recommended starting dilutions; optimal dilutions/concentrations should be determined by the end user.

Application	Abreviews	Notes
IP		1/70.
ICC/IF		1/2000.
WB		1/2000. Detects a band of approximately 62 kDa (predicted molecular weight: 62 kDa).

## Target

### Function

Catalytic histone acetyltransferase subunit of the RNA polymerase II elongator complex, which is a component of the RNA polymerase II (Pol II) holoenzyme and is involved in transcriptional elongation. Elongator may play a role in chromatin remodeling and is involved in acetylation of histones H3 and probably H4. May also have a methyltransferase activity.

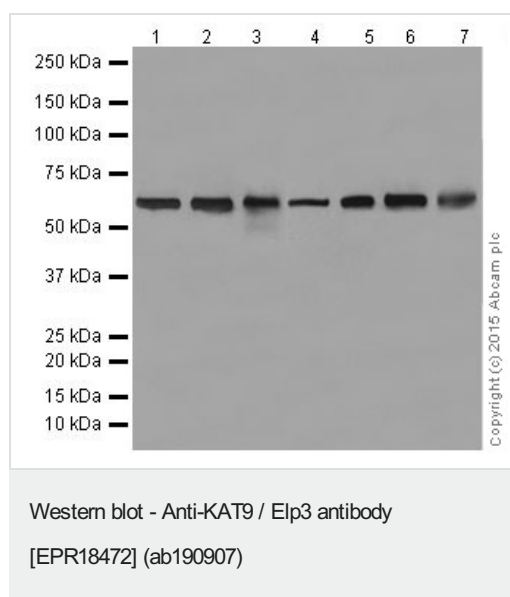
### Sequence similarities

Belongs to the ELP3 family.  
Contains 1 N-acetyltransferase domain.

### Cellular localization

Cytoplasm. Nucleus.

## Images



**All lanes :** Anti-KAT9 / Elp3 antibody [EPR18472] (ab190907) at 1/5000 dilution

**Lanes 1 & 7 :** HeLa (Human epithelial cells from cervix adenocarcinoma) whole cell lysate

**Lane 2 :** K562 (Human chronic myelogenous leukemia cells from bone marrow) whole cell lysate

**Lane 3 :** Jurkat (Human T cell leukemia cells from peripheral blood) whole cell lysate

**Lane 4 :** 293 (Human epithelial cells from embryonic kidney) whole cell lysate

**Lane 5 :** HepG2 (Human liver hepatocellular carcinoma) whole cell lysate

**Lane 6 :** MCF7 (Human breast adenocarcinoma cell line) whole cell lysate

Lysates/proteins at 10 µg per lane.

### Secondary

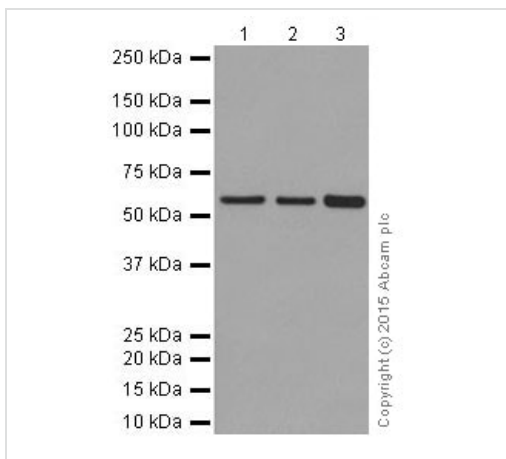
**All lanes** : Goat Anti-Rabbit IgG H&L (HRP) (**ab97051**) at 1/1000 dilution

**Predicted band size:** 62 kDa

**Observed band size:** 62 kDa

**Exposure time:** 5 seconds

Blocking/Dilution buffer: 5% NFDm/TBST.



Western blot - Anti-KAT9 / Elp3 antibody [EPR18472] (ab190907)

**All lanes** : Anti-KAT9 / Elp3 antibody [EPR18472] (ab190907) at 1/2000 dilution

**Lane 1** : Human fetal brain tissue lysate

**Lane 2** : Human fetal heart tissue lysate

**Lane 3** : Human fetal kidney tissue lysate

Lysates/proteins at 10 µg per lane.

### Secondary

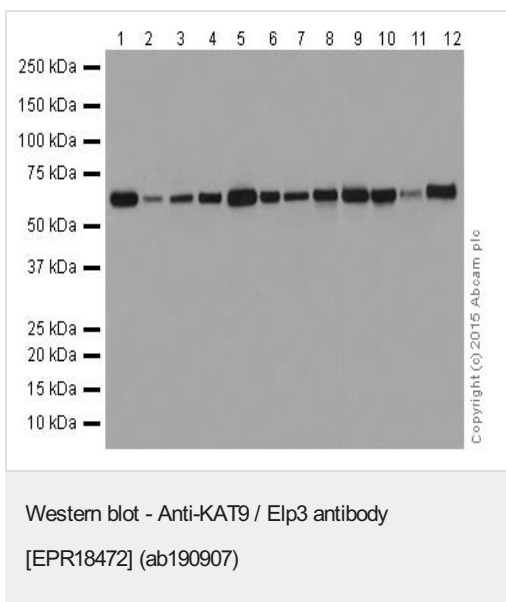
**All lanes** : Anti-Rabbit IgG (HRP), specific to the non-reduced form of IgG at 1/1000 dilution

**Predicted band size:** 62 kDa

**Observed band size:** 62 kDa

**Exposure time:** 3 minutes

Blocking/Dilution buffer: 5% NFDm/TBST.



**All lanes** : Anti-KAT9 / Elp3 antibody [EPR18472] (ab190907) at 1/2000 dilution

**Lane 1** : Mouse brain tissue lysate

**Lane 2** : Mouse heart tissue lysate

**Lane 3** : Mouse kidney tissue lysate

**Lane 4** : Mouse spleen tissue lysate

**Lane 5** : Rat brain tissue lysate

**Lane 6** : Rat heart tissue lysate

**Lane 7** : Rat kidney tissue lysate

**Lane 8** : Rat spleen tissue lysate

**Lane 9** : C6 (Rat gliial tumor cells) whole cell lysate

**Lane 10** : RAW 264.7 (Mouse macrophage cells transformed with Abelson murine leukemia virus) whole cell lysate

**Lane 11** : PC-12 (Rat adrenal gland pheochromocytoma) whole cell lysate

**Lane 12** : NIH/3T3 (Mouse embryo fibroblast cells) whole cell lysate

Lysates/proteins at 10 µg per lane.

### Secondary

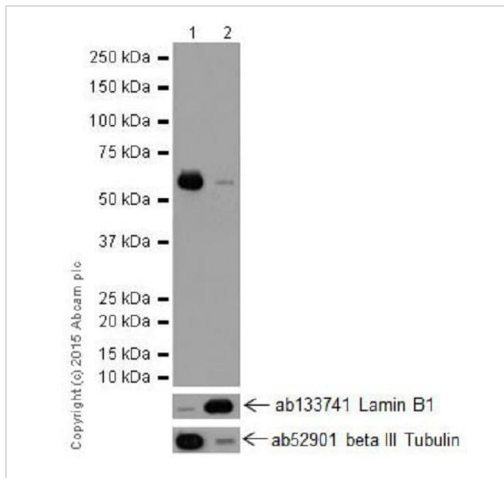
**All lanes** : Goat Anti-Rabbit IgG H&L (HRP) (**ab97051**) at 1/1000 dilution

**Predicted band size:** 62 kDa

**Observed band size:** 62 kDa

**Exposure time:** 5 seconds

5% NFDM/TBST: Blocking and diluting buffer.



Western blot - Anti-KAT9 / Elp3 antibody [EPR18472] (ab190907)

**All lanes :** Anti-KAT9 / Elp3 antibody [EPR18472] (ab190907) at 1/10000 dilution

**Lane 1 :** HeLa (Human epithelial cells from cervix adenocarcinoma) cytosolic fraction lysate

**Lane 2 :** HeLa (Human epithelial cells from cervix adenocarcinoma) nuclear fraction lysate

Lysates/proteins at 10 µg per lane.

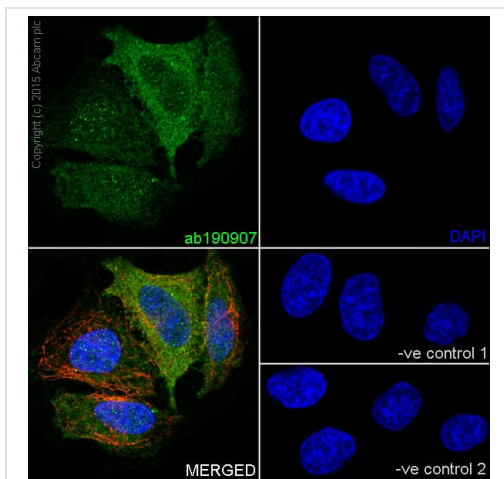
### Secondary

**All lanes :** Goat Anti-Rabbit IgG H&L (HRP) (**ab97051**) at 1/1000 dilution

**Predicted band size:** 62 kDa

**Observed band size:** 62 kDa

**Exposure time:** 15 seconds



Immunocytochemistry/ Immunofluorescence - Anti-KAT9 / Elp3 antibody [EPR18472] (ab190907)

Immunofluorescent analysis of 4% paraformaldehyde-fixed, 0.1% Triton X-100 permeabilized HeLa (Human epithelial cells from cervix adenocarcinoma) cells labeling KAT9 / Elp3 with ab190907 at 1/2000 dilution, followed by Goat anti-rabbit IgG (Alexa Fluor® 488) (**ab150077**) secondary antibody at 1/1000 dilution (green).

Confocal image showing cytoplasmic and nuclear staining on HeLa cells line. The staining pattern is in agreement with the data shown in the following publications: Cell 2009. 136, 551-64 (PMID: 19185337) and J Biol Chem. 2002. 277, 3047-3052 (PMID: 11714725).

The nuclear counterstain is DAPI (blue).

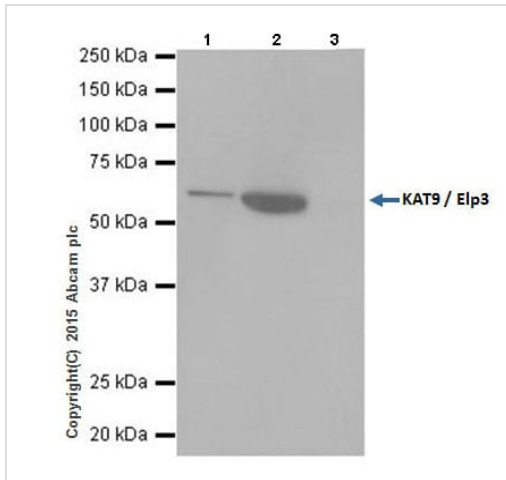
Tubulin is detected with **ab7291** (anti-Tubulin mouse mAb) at 1/1000 dilution and **ab150120** (AlexaFluor®594 Goat anti-Mouse secondary) at 1/1000 dilution (red).

The negative controls are as follows:-

-ve control 1: ab190907 at 1/2000 dilution followed by **ab150120** (AlexaFluor®594 Goat anti-Mouse secondary) at 1/1000 dilution.

-ve control 2: **ab7291** (anti-Tubulin mouse mAb) at 1/1000 dilution followed by **ab150077** (Alexa Fluor®488 Goat Anti-Rabbit IgG

H&L) at 1/1000 dilution.



Immunoprecipitation - Anti-KAT9 / Elp3 antibody  
[EPR18472] (ab190907)

KAT9 / Elp3 was immunoprecipitated from 1mg of MCF7 (Human breast adenocarcinoma cell line) whole cell lysate with ab190907 at 1/70 dilution.

Lane 1: MCF7 whole cell lysate 10ug (Input).

Lane 2: ab190907 IP in MCF7 whole cell lysate.

Lane 3: Rabbit monoclonal IgG (**ab172730**) instead of ab190907 in MCF7 whole cell lysate.

Western blot was performed from the immunoprecipitate using ab190907 at 1/5000 dilution. Anti-Rabbit IgG (HRP), specific to the non-reduced form of IgG, was used as secondary antibody at 1/1500.

Blocking and dilution buffer and concentration: 5% NFD/MTBST.

Exposure time: 3 seconds.

Why choose a recombinant antibody?

- Research with confidence**  
Consistent and reproducible results
- Long-term and scalable supply**  
Recombinant technology
- Success from the first experiment**  
Confirmed specificity
- Ethical standards compliant**  
Animal-free production

Anti-KAT9 / Elp3 antibody [EPR18472] (ab190907)

**Please note:** All products are "FOR RESEARCH USE ONLY. NOT FOR USE IN DIAGNOSTIC PROCEDURES"

### Our Abpromise to you: Quality guaranteed and expert technical support

- Replacement or refund for products not performing as stated on the datasheet
- Valid for 12 months from date of delivery
- Response to your inquiry within 24 hours
- We provide support in Chinese, English, French, German, Japanese and Spanish
- Extensive multi-media technical resources to help you
- We investigate all quality concerns to ensure our products perform to the highest standards

If the product does not perform as described on this datasheet, we will offer a refund or replacement. For full details of the Abpromise,

please visit <https://www.abcam.com/abpromise> or contact our technical team.

## **Terms and conditions**

---

- Guarantee only valid for products bought direct from Abcam or one of our authorized distributors