

Product datasheet

Anti-KATNB1 antibody ab224171

[1 References](#) [3 Images](#)

Overview

Product name	Anti-KATNB1 antibody
Description	Rabbit polyclonal to KATNB1
Host species	Rabbit
Tested applications	Suitable for: IHC-P, WB, ICC/IF
Species reactivity	Reacts with: Human
Immunogen	Recombinant fragment corresponding to Human KATNB1 aa 400-550. Database link: Q9BVA0 Run BLAST with Run BLAST with
Positive control	IHC-P: Human stomach tissue. WB: RT4 and U-251 MG cell lysate. ICC/IF: U-2 OS cells.
General notes	<p>The Life Science industry has been in the grips of a reproducibility crisis for a number of years. Abcam is leading the way in addressing this with our range of recombinant monoclonal antibodies and knockout edited cell lines for gold-standard validation. Please check that this product meets your needs before purchasing.</p> <p>If you have any questions, special requirements or concerns, please send us an inquiry and/or contact our Support team ahead of purchase. Recommended alternatives for this product can be found below, along with publications, customer reviews and Q&As</p>

Properties

Form	Liquid
Storage instructions	Shipped at 4°C. Store at +4°C short term (1-2 weeks). Upon delivery aliquot. Store at -20°C long term. Avoid freeze / thaw cycle.
Storage buffer	pH: 7.20 Preservative: 0.02% Sodium azide Constituents: 40% Glycerol (glycerin, glycerine), PBS
Purity	Immunogen affinity purified
Clonality	Polyclonal
Isotype	IgG

Applications

The Abpromise guarantee

Our **Abpromise guarantee** covers the use of ab224171 in the following tested applications.

The application notes include recommended starting dilutions; optimal dilutions/concentrations should be determined by the end user.

Application	Abreviews	Notes
IHC-P		1/1000 - 1/2500. Perform heat mediated antigen retrieval with citrate buffer pH 6 before commencing with IHC staining protocol.
WB		Use a concentration of 0.04 - 0.4 µg/ml. Predicted molecular weight: 72 kDa.
ICC/IF		Use a concentration of 0.25 - 2 µg/ml. Fixation/Permeabilization: PFA/Triton X-100.

Target

Function

Participates in a complex which severs microtubules in an ATP-dependent manner. May act to target the enzymatic subunit of this complex to sites of action such as the centrosome. Microtubule severing may promote rapid reorganization of cellular microtubule arrays and the release of microtubules from the centrosome following nucleation. Microtubule release from the mitotic spindle poles may allow depolymerization of the microtubule end proximal to the spindle pole, leading to poleward microtubule flux and poleward motion of chromosome. Microtubule release within the cell body of neurons may be required for their transport into neuronal processes by microtubule-dependent motor proteins. This transport is required for axonal growth.

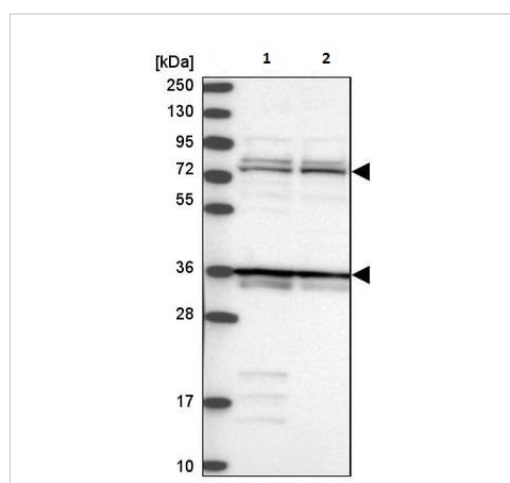
Sequence similarities

Belongs to the WD repeat KATNB1 family.
Contains 6 WD repeats.

Cellular localization

Cytoplasm. Cytoplasm > cytoskeleton > centrosome. Cytoplasm > cytoskeleton > spindle pole. Cytoplasm > cytoskeleton. Predominantly cytoplasmic. Localized to the interphase centrosome and mitotic spindle poles.

Images



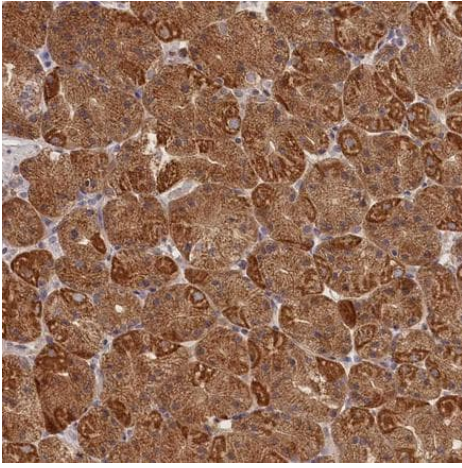
Western blot - Anti-KATNB1 antibody (ab224171)

All lanes : Anti-KATNB1 antibody (ab224171) at 1/1000 dilution

Lane 1 : RT4 (human urinary bladder cancer cell line) cell lysate

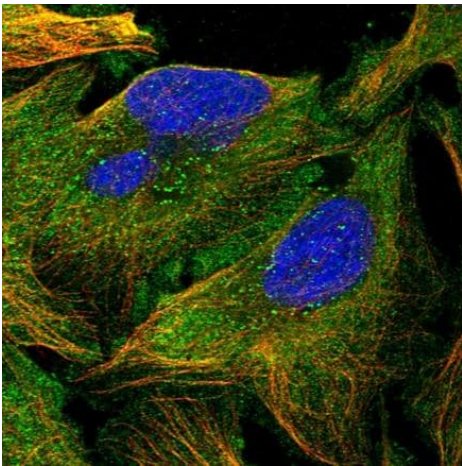
Lane 2 : U-251 MG (human brain glioma cell line) cell lysate

Predicted band size: 72 kDa



Paraffin-embedded human stomach tissue stained for KATNB1 using ab224171 at 1/1000 dilution in immunohistochemical analysis.

Immunohistochemistry (Formalin/PFA-fixed paraffin-embedded sections) - Anti-KATNB1 antibody (ab224171)



PFA-fixed, Triton X-100 permeabilized U-2 OS (human bone osteosarcoma epithelial cell line) cells stained for KATNB1 (green) using ab224171 at 4 µg/ml in ICC/IF.

Immunocytochemistry/ Immunofluorescence - Anti-KATNB1 antibody (ab224171)

Please note: All products are "FOR RESEARCH USE ONLY. NOT FOR USE IN DIAGNOSTIC PROCEDURES"

Our Abpromise to you: Quality guaranteed and expert technical support

- Replacement or refund for products not performing as stated on the datasheet
- Valid for 12 months from date of delivery
- Response to your inquiry within 24 hours
- We provide support in Chinese, English, French, German, Japanese and Spanish
- Extensive multi-media technical resources to help you
- We investigate all quality concerns to ensure our products perform to the highest standards

If the product does not perform as described on this datasheet, we will offer a refund or replacement. For full details of the Abpromise, please visit <https://www.abcam.com/abpromise> or contact our technical team.

Terms and conditions

- Guarantee only valid for products bought direct from Abcam or one of our authorized distributors