



Product datasheet

Anti-KChIP2 antibody [K60/73] α b252539

Recombinant

3 Images

Overview

Product name	Anti-KChIP2 antibody [K60/73]
Description	Mouse monoclonal [K60/73] to KChIP2
Host species	Mouse
Tested applications	Suitable for: IHC-P Unsuitable for: ICC/IF or WB
Species reactivity	Reacts with: Mouse, Rat
Immunogen	Recombinant fragment within Rat KChIP2 aa 1-300. The exact immunogen sequence used to generate this antibody is proprietary information. If additional detail on the immunogen is needed to determine the suitability of the antibody for your needs, please <u>contact</u> our Scientific Support team to discuss your requirements. Database link: <u>Q9JM59</u>
	 <u>Run BLAST with</u>  <u>Run BLAST with</u>
Positive control	IHC-P: Mouse and rat cerebrum tissue.
General notes	<p>This antibody clone is manufactured by Abcam. If you require a custom buffer formulation or conjugation for your experiments, please contact <u>orders@abcam.com</u>.</p> <p>This product is a recombinant monoclonal antibody, which offers several advantages including:</p> <ul style="list-style-type: none">- High batch-to-batch consistency and reproducibility- Improved sensitivity and specificity- Long-term security of supply- Animal-free production <p>For more information <u>see here</u>.</p>

Properties

Form	Liquid
Storage instructions	Shipped at 4°C. Store at +4°C short term (1-2 weeks). Upon delivery aliquot. Store at -20°C long term. Avoid freeze / thaw cycle.
Storage buffer	pH: 7.2 Preservative: 0.01% Sodium azide Constituents: 59% PBS, 0.05% BSA, 40% Glycerol (glycerin, glycerine)

Purity	Protein A purified
Clonality	Monoclonal
Clone number	K60/73
Isotype	IgG1

Applications

The Abpromise guarantee Our **Abpromise guarantee** covers the use of ab252539 in the following tested applications. The application notes include recommended starting dilutions; optimal dilutions/concentrations should be determined by the end user.

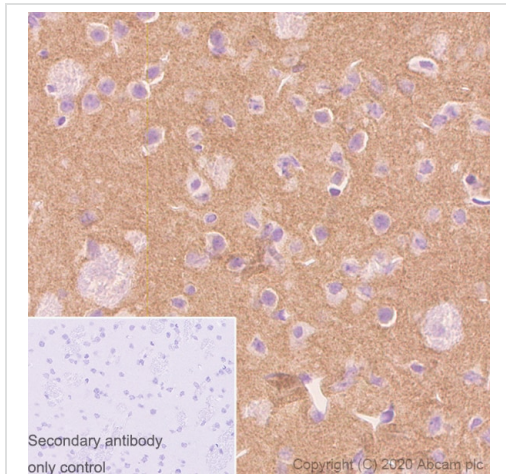
Application	Abreviews	Notes
IHC-P		1/100.

Application notes Is unsuitable for ICC/IF or WB.

Target

Function	Regulatory subunit of Kv4/D (Shal)-type voltage-gated rapidly inactivating A-type potassium channels. Modulates channel density, inactivation kinetics and rate of recovery from inactivation in a calcium-dependent and isoform-specific manner. In vitro, modulates KCND2/Kv4.2 and KCND3/Kv4.3 currents. Involved in KCND2 and KCND3 trafficking to the cell surface. May be required for the expression of I(To) currents in the heart.
Tissue specificity	Expressed in brain. Colocalizes with KCND2 in excitatory neurons including cortical and hippocampal CA1 pyramidal cells. Isoform 3 is expressed in heart and in umbilical vein endothelial cells. Not expressed in fetal heart.
Sequence similarities	Belongs to the recoverin family. Contains 4 EF-hand domains.
Post-translational modifications	Palmitoylated. Palmitoylation enhances association with the plasma membrane.
Cellular localization	Cell membrane and Cell membrane. Detected on lipid rafts (By similarity).
Form	There are 9 isoforms produced by alternative splicing.

Images

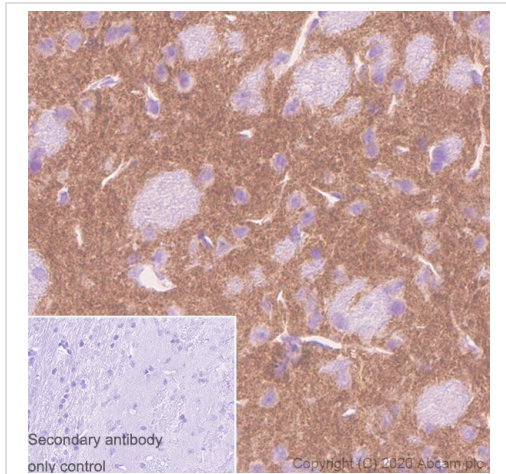


Immunohistochemistry (Formalin/PFA-fixed paraffin-embedded sections) - Anti-KChIP2 antibody [K60/73] (ab252539)

Immunohistochemical analysis of paraffin-embedded mouse cerebrum tissue labeling KChIP2 with ab252539 at 1/100 dilution followed by a ready to use secondary. Positive staining on the mouse cerebrum is observed. The section was incubated with ab252539 for 30 mins at room temperature. The immunostaining was performed on a Leica Biosystems BOND® RX instrument. Counterstained with Hematoxylin.

Secondary antibody only control: Secondary antibody is ready to use secondary.

Heat mediated antigen retrieval with Tris-EDTA buffer (pH 9.0, epitope retrieval solution2) for 20 mins.



Immunohistochemistry (Formalin/PFA-fixed paraffin-embedded sections) - Anti-KChIP2 antibody [K60/73] (ab252539)

Immunohistochemical analysis of paraffin-embedded rat cerebrum tissue labeling KChIP2 with ab252539 at 1/100 dilution followed by a ready to use secondary. Positive staining on the rat cerebrum is observed. The section was incubated with ab252539 for 30 mins at room temperature. The immunostaining was performed on a Leica Biosystems BOND® RX instrument. Counterstained with Hematoxylin.

Secondary antibody only control: Secondary antibody is ready to use.

Heat mediated antigen retrieval with Tris-EDTA buffer (pH 9.0, epitope retrieval solution2) for 20 mins.

Why choose a recombinant antibody?



Research with confidence
Consistent and reproducible results



Long-term and scalable supply
Recombinant technology



Success from the first experiment
Confirmed specificity



Ethical standards compliant
Animal-free production

Anti-KChIP2 antibody [K60/73] (ab252539)

Please note: All products are "FOR RESEARCH USE ONLY. NOT FOR USE IN DIAGNOSTIC PROCEDURES"

Our Abpromise to you: Quality guaranteed and expert technical support

- Replacement or refund for products not performing as stated on the datasheet
- Valid for 12 months from date of delivery
- Response to your inquiry within 24 hours
- We provide support in Chinese, English, French, German, Japanese and Spanish
- Extensive multi-media technical resources to help you
- We investigate all quality concerns to ensure our products perform to the highest standards

If the product does not perform as described on this datasheet, we will offer a refund or replacement. For full details of the Abpromise, please visit <https://www.abcam.com/abpromise> or contact our technical team.

Terms and conditions

- Guarantee only valid for products bought direct from Abcam or one of our authorized distributors