


Product datasheet

Anti-KCTD12 antibody ab124260

[2 Images](#)

Overview

Product name	Anti-KCTD12 antibody
Description	Rabbit polyclonal to KCTD12
Host species	Rabbit
Tested applications	Suitable for: WB, IP
Species reactivity	Reacts with: Human Predicted to work with: Mouse, Guinea pig, Chimpanzee, Rhesus monkey, Orangutan 
Immunogen	Synthetic peptide, corresponding to a region within amino acids 125-175 of Human KCTD12 (NP_612453.1).
Positive control	293T, HeLa and Jurkat whole cell lysates
General notes	<p>The Life Science industry has been in the grips of a reproducibility crisis for a number of years. Abcam is leading the way in addressing this with our range of recombinant monoclonal antibodies and knockout edited cell lines for gold-standard validation. Please check that this product meets your needs before purchasing.</p> <p>If you have any questions, special requirements or concerns, please send us an inquiry and/or contact our Support team ahead of purchase. Recommended alternatives for this product can be found below, along with publications, customer reviews and Q&As</p>

Properties

Form	Liquid
Storage instructions	Shipped at 4°C. Upon delivery aliquot and store at -20°C. Avoid freeze / thaw cycles.
Storage buffer	pH: 7 Preservative: 0.09% Sodium azide Constituent: 99% Tris citrate/phosphate
Purity	pH 7 to 8 Immunogen affinity purified
Clonality	Polyclonal
Isotype	IgG

Applications

The Abpromise guarantee

Our **Abpromise guarantee** covers the use of ab124260 in the following tested applications.

The application notes include recommended starting dilutions; optimal dilutions/concentrations should be determined by the end user.

Application	Abreviews	Notes
WB		1/2000 - 1/10000.
IP		Use at 2-10 µg/mg of lysate.

Target

Function

Auxiliary subunit of GABA-B receptors that determine the pharmacology and kinetics of the receptor response. Increases agonist potency and markedly alter the G-protein signaling of the receptors by accelerating onset and promoting desensitization.

Tissue specificity

Present in a variety of fetal organs, with highest expression levels in the cochlea and brain and, in stark contrast, is detected only at extremely low levels in adult organs, such as brain and lung.

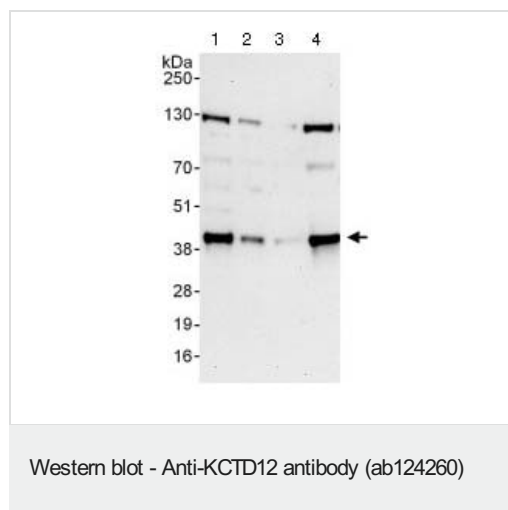
Post-translational modifications

Phosphorylated upon DNA damage, probably by ATM or ATR.

Cellular localization

Cell junction > synapse > presynaptic cell membrane. Cell junction > synapse > postsynaptic cell membrane.

Images



All lanes : Anti-KCTD12 antibody (ab124260) at 0.1 µg/ml

Lane 1 : 293T whole cell lysate at 50 µg

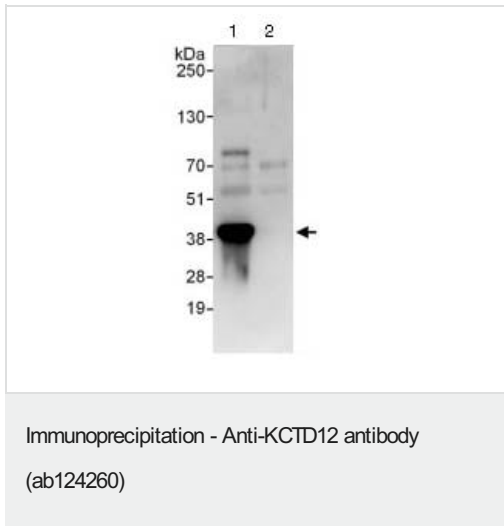
Lane 2 : 293T whole cell lysate at 15 µg

Lane 3 : Jurkat whole cell lysate at 50 µg

Lane 4 : HeLa whole cell lysate at 50 µg

Developed using the ECL technique.

Exposure time: 30 seconds



Lane 1: ab124260 at 1 µg/ml staining KCTD12 in 293T whole cell lysate immunoprecipitated using ab124260 at 6 µg/mg lysate (1 mg/IP; 20% of IP loaded/lane).

Lane 2: Control IgG.

Detection: Chemiluminescence with exposure time of 10 seconds.

Please note: All products are "FOR RESEARCH USE ONLY. NOT FOR USE IN DIAGNOSTIC PROCEDURES"

Our Abpromise to you: Quality guaranteed and expert technical support

- Replacement or refund for products not performing as stated on the datasheet
- Valid for 12 months from date of delivery
- Response to your inquiry within 24 hours
- We provide support in Chinese, English, French, German, Japanese and Spanish
- Extensive multi-media technical resources to help you
- We investigate all quality concerns to ensure our products perform to the highest standards

If the product does not perform as described on this datasheet, we will offer a refund or replacement. For full details of the Abpromise, please visit <https://www.abcam.com/abpromise> or contact our technical team.

Terms and conditions

- Guarantee only valid for products bought direct from Abcam or one of our authorized distributors