




## Product datasheet

# Anti-KDM2A antibody ab99242

[2 References](#) [2 Images](#)

### Overview

<b>Product name</b>	Anti-KDM2A antibody
<b>Description</b>	Rabbit polyclonal to KDM2A
<b>Host species</b>	Rabbit
<b>Tested applications</b>	<b>Suitable for:</b> IHC-P
<b>Species reactivity</b>	<b>Reacts with:</b> Human <b>Predicted to work with:</b> Rabbit, Horse, Guinea pig, Cow, Dog, Pig, Chimpanzee, Gorilla, Orangutan, Bat 
<b>Immunogen</b>	Synthetic peptide corresponding to Human KDM2A aa 800-900. Database link: <a href="#">NP_036440.1</a>  <a href="#">Run BLAST with</a>  <a href="#">Run BLAST with</a>
<b>Positive control</b>	Human Anaplastic Thyroid Carcinoma, Breast Carcinoma, Lung Adenocarcinoma, Ovarian Carcinoma, Skin Basal Cell Carcinoma and Stomach Adenocarcinoma
<b>General notes</b>	<p>The Life Science industry has been in the grips of a reproducibility crisis for a number of years. Abcam is leading the way in addressing this with our range of recombinant monoclonal antibodies and knockout edited cell lines for gold-standard validation. Please check that this product meets your needs before purchasing.</p> <p>If you have any questions, special requirements or concerns, please send us an inquiry and/or contact our Support team ahead of purchase. Recommended alternatives for this product can be found below, along with publications, customer reviews and Q&amp;As</p>

### Properties

<b>Form</b>	Liquid
<b>Storage instructions</b>	Shipped at 4°C. Upon delivery aliquot and store at -20°C. Avoid freeze / thaw cycles.
<b>Storage buffer</b>	pH: 6.8 Preservative: 0.09% Sodium azide Constituents: 0.1% BSA, Tris buffered saline
<b>Purity</b>	Immunogen affinity purified
<b>Clonality</b>	Polyclonal
<b>Isotype</b>	IgG

## Applications

### The Abpromise guarantee

Our **Abpromise guarantee** covers the use of ab99242 in the following tested applications.

The application notes include recommended starting dilutions; optimal dilutions/concentrations should be determined by the end user.

Application	Abreviews	Notes
IHC-P		1/100 - 1/500. Epitope exposure is recommended. Epitope exposure with citrate buffer will enhance staining.

## Target

### Function

Histone demethylase that specifically demethylates 'Lys-36' of histone H3, thereby playing a central role in histone code. Preferentially demethylates dimethylated H3 'Lys-36' residue while it has weak or no activity for mono- and tri-methylated H3 'Lys-36'. May also recognize and bind to some phosphorylated proteins and promote their ubiquitination and degradation. Required to maintain the heterochromatic state. Associates with centromeres and represses transcription of small non-coding RNAs that are encoded by the clusters of satellite repeats at the centromere. Required to sustain centromeric integrity and genomic stability, particularly during mitosis.

### Tissue specificity

Widely expressed, with highest levels in brain, testis and ovary, followed by lung.

### Sequence similarities

Belongs to the JHDM1 histone demethylase family.

Contains 1 CXXC-type zinc finger.

Contains 1 F-box domain.

Contains 1 JmjC domain.

Contains 6 LRR (leucine-rich) repeats.

Contains 1 PHD-type zinc finger.

### Domain

The JmjC domain mediates demethylation activity and is required for satellite silencing.

The CXXC zinc finger preferentially recognizes nonmethylated CpG DNA, and binding is blocked when the CpG DNA is methylated.

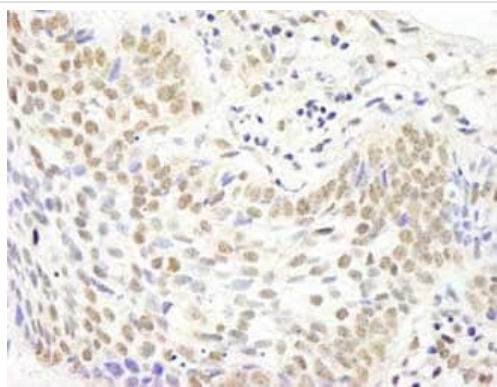
### Post-translational modifications

Phosphorylated upon DNA damage, probably by ATM or ATR.

### Cellular localization

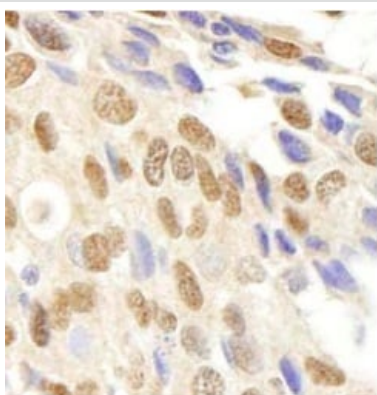
Nucleus > nucleoplasm. Punctate expression throughout the nucleoplasm and enriched in the perinucleolar region. Specifically nucleates at CpG islands where its presence results in chromatin depleted in H3K36me2.

## Images



Immunohistochemistry (Formalin/PFA-fixed paraffin-embedded sections) - Anti-KDM2A antibody (ab99242)

ab99242, at 1/250 dilution, staining KDM2A in formalin-fixed paraffin-embedded Human skin basal cell carcinoma by Immunohistochemistry using DAB staining.



Immunohistochemistry (Formalin/PFA-fixed paraffin-embedded sections) - Anti-KDM2A antibody (ab99242)

ab99242, at 1/250 dilution, staining KDM2A in formalin-fixed paraffin-embedded Human breast carcinoma by Immunohistochemistry using DAB staining.

**Please note:** All products are "FOR RESEARCH USE ONLY. NOT FOR USE IN DIAGNOSTIC PROCEDURES"

### Our Abpromise to you: Quality guaranteed and expert technical support

- Replacement or refund for products not performing as stated on the datasheet
- Valid for 12 months from date of delivery
- Response to your inquiry within 24 hours
- We provide support in Chinese, English, French, German, Japanese and Spanish
- Extensive multi-media technical resources to help you
- We investigate all quality concerns to ensure our products perform to the highest standards

If the product does not perform as described on this datasheet, we will offer a refund or replacement. For full details of the Abpromise, please visit <https://www.abcam.com/abpromise> or contact our technical team.

### Terms and conditions

- Guarantee only valid for products bought direct from Abcam or one of our authorized distributors