

Product datasheet

Anti-KDM2B antibody [6F6G11] ab234082

[1 References](#) [4 Images](#)

Overview

Product name	Anti-KDM2B antibody [6F6G11]
Description	Mouse monoclonal [6F6G11] to KDM2B
Host species	Mouse
Tested applications	Suitable for: WB, Flow Cyt
Species reactivity	Reacts with: Human, Recombinant fragment
Immunogen	Recombinant fragment corresponding to Human KDM2B aa 457-555. Expressed in E.coli. Database link: Q8NHM5
Positive control	WB: Human KDM2B (aa 457-555) recombinant protein; KDM2B (aa 457-555)-hlgGfc-transfected HEK-293 cell lysate; A549 cell lysate. Flow cyt: HeLa cells.
General notes	<p>The Life Science industry has been in the grips of a reproducibility crisis for a number of years. Abcam is leading the way in addressing this with our range of recombinant monoclonal antibodies and knockout edited cell lines for gold-standard validation. Please check that this product meets your needs before purchasing.</p> <p>If you have any questions, special requirements or concerns, please send us an inquiry and/or contact our Support team ahead of purchase. Recommended alternatives for this product can be found below, along with publications, customer reviews and Q&As</p>

Properties

Form	Liquid
Storage instructions	Shipped at 4°C. Store at +4°C short term (1-2 weeks). Upon delivery aliquot. Store at -20°C long term. Avoid freeze / thaw cycle.
Storage buffer	Preservative: 0.05% Sodium azide Constituent: PBS
Purity	Protein G purified
Purification notes	Purified from tissue culture supernatant.
Clonality	Monoclonal
Clone number	6F6G11
Isotype	IgG2b

Applications

The Abpromise guarantee

Our **Abpromise guarantee** covers the use of ab234082 in the following tested applications.

The application notes include recommended starting dilutions; optimal dilutions/concentrations should be determined by the end user.

Application	Abreviews	Notes
WB		1/100 - 1/500. Predicted molecular weight: 153 kDa.
Flow Cyt		1/200 - 1/400.

Target

Function

Histone demethylase that demethylates 'Lys-4' and 'Lys-36' of histone H3, thereby playing a central role in histone code. Preferentially demethylates trimethylated H3 'Lys-4' and dimethylated H3 'Lys-36' residue while it has weak or no activity for mono- and tri-methylated H3 'Lys-36'. Preferentially binds the transcribed region of ribosomal RNA and represses the transcription of ribosomal RNA genes which inhibits cell growth and proliferation. May also serve as a substrate-recognition component of the SCF (SKP1-CUL1-F-box protein)-type E3 ubiquitin ligase complex.

Sequence similarities

Belongs to the JHDM1 histone demethylase family.

Contains 1 CXXC-type zinc finger.

Contains 1 F-box domain.

Contains 1 JmjC domain.

Contains 7 LRR (leucine-rich) repeats.

Contains 1 PHD-type zinc finger.

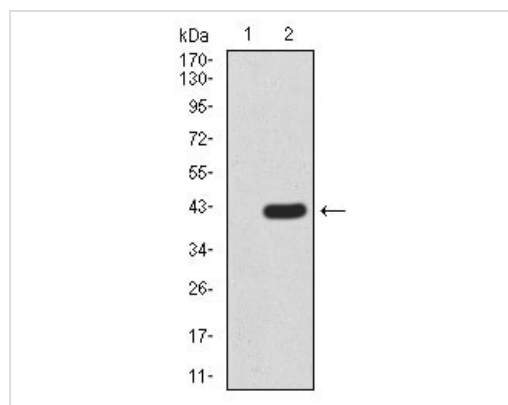
Domain

The JmjC domain mediates demethylation activity (By similarity). It is also required for repression of ribosomal RNA genes.

Cellular localization

Nucleus > nucleolus.

Images



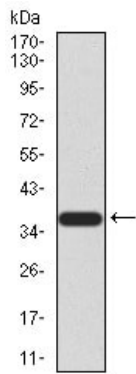
Western blot - Anti-KDM2B antibody [6F6G11] (ab234082)

All lanes : Anti-KDM2B antibody [6F6G11] (ab234082) at 1/100 dilution

Lane 1 : HEK-293 (human epithelial cell line from embryonic kidney) cell lysate.

Lane 2 : KDM2B (aa 457-555)-hlgGFc-transfected HEK-293 cell lysate.

Predicted band size: 153 kDa

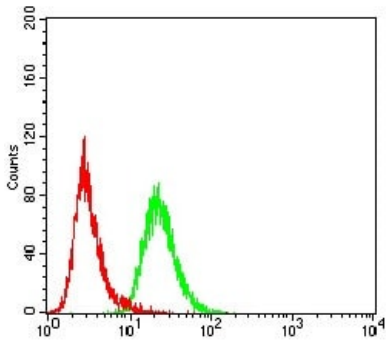


Western blot - Anti-KDM2B antibody [6F6G11]
(ab234082)

Anti-KDM2B antibody [6F6G11] (ab234082) at 1/100 dilution +
Human KDM2B (aa 457-555) recombinant protein.

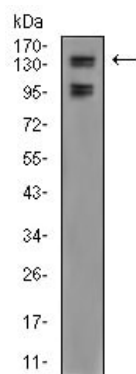
Predicted band size: 153 kDa

Expected recombinant MW: 36.8 kDa



Flow Cytometry - Anti-KDM2B antibody [6F6G11]
(ab234082)

Flow cytometric analysis of HeLa (human epithelial cell line from
cervix adenocarcinoma) cells labelling KDM2B using ab234082 at
1/200 dilution (green) compared to a negative control (red).



Western blot - Anti-KDM2B antibody [6F6G11]
(ab234082)

Anti-KDM2B antibody [6F6G11] (ab234082) at 1/100 dilution +
A549 (human lung carcinoma cell line) cell lysate.

Predicted band size: 153 kDa

Please note: All products are "FOR RESEARCH USE ONLY. NOT FOR USE IN DIAGNOSTIC PROCEDURES"

Our Abpromise to you: Quality guaranteed and expert technical support

- Replacement or refund for products not performing as stated on the datasheet
- Valid for 12 months from date of delivery
- Response to your inquiry within 24 hours

- We provide support in Chinese, English, French, German, Japanese and Spanish
- Extensive multi-media technical resources to help you
- We investigate all quality concerns to ensure our products perform to the highest standards

If the product does not perform as described on this datasheet, we will offer a refund or replacement. For full details of the Abpromise, please visit <https://www.abcam.com/abpromise> or contact our technical team.

Terms and conditions

- Guarantee only valid for products bought direct from Abcam or one of our authorized distributors