


## Product datasheet

# Anti-KDM3A / JHDM2A antibody ab80598

★★★★☆ [2 Abreviews](#) [3 References](#) [2 Images](#)

### Overview

---

<b>Product name</b>	Anti-KDM3A / JHDM2A antibody
<b>Description</b>	Rabbit polyclonal to KDM3A / JHDM2A
<b>Host species</b>	Rabbit
<b>Tested applications</b>	<b>Suitable for:</b> WB, IP
<b>Species reactivity</b>	<b>Reacts with:</b> Human <b>Predicted to work with:</b> Cow, Dog, Pig, Chimpanzee, Ferret, Rhesus monkey, Gorilla 
<b>Immunogen</b>	Synthetic peptide. This information is proprietary to Abcam and/or its suppliers.
<b>Positive control</b>	HeLa whole cell lysate
<b>General notes</b>	<p>The Life Science industry has been in the grips of a reproducibility crisis for a number of years. Abcam is leading the way in addressing this with our range of recombinant monoclonal antibodies and knockout edited cell lines for gold-standard validation. Please check that this product meets your needs before purchasing.</p> <p>If you have any questions, special requirements or concerns, please send us an inquiry and/or contact our Support team ahead of purchase. Recommended alternatives for this product can be found below, along with publications, customer reviews and Q&amp;As</p>

### Properties

---

<b>Form</b>	Liquid
<b>Storage instructions</b>	Shipped at 4°C. Upon delivery aliquot and store at -20°C. Avoid freeze / thaw cycles.
<b>Storage buffer</b>	pH: 7 Preservative: 0.09% Sodium azide Constituents: 1.815% Tris, 1.764% Sodium citrate, 0.021% PBS
<b>Purity</b>	Immunogen affinity purified
<b>Purification notes</b>	Affinity purified using an epitope specific to KDM3A / JHDM2A immobilized on solid support.
<b>Clonality</b>	Polyclonal
<b>Isotype</b>	IgG

### Applications

---

## The Abpromise guarantee

Our **Abpromise guarantee** covers the use of ab80598 in the following tested applications.

The application notes include recommended starting dilutions; optimal dilutions/concentrations should be determined by the end user.

Application	Abreviews	Notes
WB	★☆☆☆☆ (1)	1/2000 - 1/10000. Predicted molecular weight: 147 kDa.
IP		Use at 2-5 µg/mg of lysate.

## Target

### Function

Histone demethylase that specifically demethylates 'Lys-9' of histone H3, thereby playing a central role in histone code. Preferentially demethylates mono- and dimethylated H3 'Lys-9' residue, with a preference for dimethylated residue, while it has weak or no activity on trimethylated H3 'Lys-9'. Demethylation of Lys residue generates formaldehyde and succinate. Involved in hormone-dependent transcriptional activation, by participating in recruitment to androgen-receptor target genes, resulting in H3 'Lys-9' demethylation and transcriptional activation. Involved in spermatogenesis by regulating expression of target genes such as PRM1 and TMP1 which are required for packaging and condensation of sperm chromatin. Involved in obesity resistance through regulation of metabolic genes such as PPARA and UCP1.

### Sequence similarities

Belongs to the JHDM2 histone demethylase family.  
Contains 1 JmjC domain.

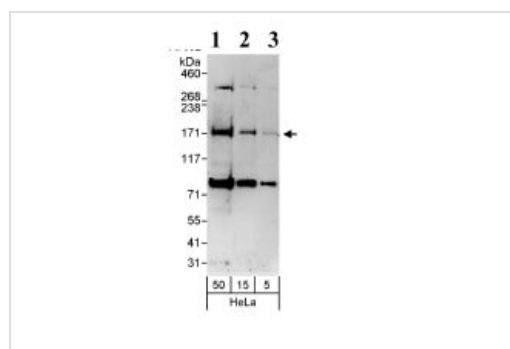
### Domain

The JmjC domain and the C6-type zinc-finger are required for the demethylation activity. Leu-Xaa-Xaa-Leu-Leu (LXXLL) motifs are known to mediate the association with nuclear receptors.

### Cellular localization

Cytoplasm. Nucleus. Nuclear in round spermatids. When spermatids start to elongate, localizes to the cytoplasm where it forms distinct foci which disappear in mature spermatozoa.

## Images



Western blot - Anti-KDM3A / JHDM2A antibody (ab80598)

**All lanes :** Anti-KDM3A / JHDM2A antibody (ab80598) at 0.1 µg/ml

**Lane 1 :** whole HeLa cell lysate at 50 µg

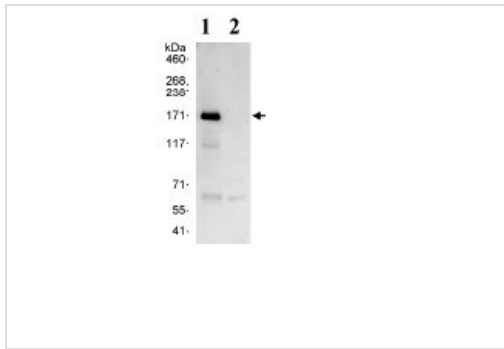
**Lane 2 :** whole HeLa cell lysate at 15 µg

**Lane 3 :** whole HeLa cell lysate at 5 µg

**Predicted band size:** 147 kDa

**Observed band size:** 171 kDa

**Additional bands at:** 300 kDa, 85 kDa. We are unsure as to the identity of these extra bands.



Immunoprecipitation - Anti-KDM3A / JHDM2A antibody (ab80598)

Detection of Human KDM3A / JHDM2A by Immunoprecipitation. Samples: Whole cell lysate (1 mg for IP, 20% of IP loaded) from HeLa cells. Antibodies: Lane 1: ab80598 used for IP at 3 µg/mg lysate; Lane 2: a control IgG was used for IP. For subsequent Western blot detection, ab80598 was used at 1 µg/ml.

**Please note:** All products are "FOR RESEARCH USE ONLY. NOT FOR USE IN DIAGNOSTIC PROCEDURES"

### Our Abpromise to you: Quality guaranteed and expert technical support

- Replacement or refund for products not performing as stated on the datasheet
- Valid for 12 months from date of delivery
- Response to your inquiry within 24 hours
- We provide support in Chinese, English, French, German, Japanese and Spanish
- Extensive multi-media technical resources to help you
- We investigate all quality concerns to ensure our products perform to the highest standards

If the product does not perform as described on this datasheet, we will offer a refund or replacement. For full details of the Abpromise, please visit <https://www.abcam.com/abpromise> or contact our technical team.

### Terms and conditions

- Guarantee only valid for products bought direct from Abcam or one of our authorized distributors