

Product datasheet

Anti-KDM6A / UTX antibody [EPR23203-211] ab253183

KO VALIDATED Recombinant RabMAB

[2 References](#) [5 Images](#)

Overview

| | |
|----------------------------|---|
| Product name | Anti-KDM6A / UTX antibody [EPR23203-211] |
| Description | Rabbit monoclonal [EPR23203-211] to KDM6A / UTX |
| Host species | Rabbit |
| Tested applications | Suitable for: Flow Cyt (Intra), WB Unsuitable for: ChIP, ICC/IF, IHC-P or IP |
| Species reactivity | Reacts with: Mouse, Human |
| Immunogen | Recombinant fragment. This information is proprietary to Abcam and/or its suppliers. |
| Positive control | WB: HAP1, HEK-293T, NIH/3T3 and F9 whole cell lysates. Flow Cyt (intra): HAP1 and F9 cells. |
| General notes | This product is a recombinant monoclonal antibody, which offers several advantages including: <ul style="list-style-type: none">- High batch-to-batch consistency and reproducibility- Improved sensitivity and specificity- Long-term security of supply- Animal-free production For more information see here . Our RabMAB [®] technology is a patented hybridoma-based technology for making rabbit monoclonal antibodies. For details on our patents, please refer to RabMAB[®] patents . |

Properties

| | |
|-----------------------------|---|
| Form | Liquid |
| Storage instructions | Shipped at 4°C. Store at +4°C short term (1-2 weeks). Upon delivery aliquot. Store at -20°C long term. Avoid freeze / thaw cycle. |
| Storage buffer | Preservative: 0.01% Sodium azide Constituents: 59.94% PBS, 40% Glycerol, 0.05% BSA |
| Purity | Protein A purified |
| Clonality | Monoclonal |
| Clone number | EPR23203-211 |
| Isotype | IgG |

Applications

The Abpromise guarantee

Our **Abpromise guarantee** covers the use of ab253183 in the following tested applications.

The application notes include recommended starting dilutions; optimal dilutions/concentrations should be determined by the end user.

| Application | Abreviews | Notes |
|------------------|-----------|--|
| Flow Cyt (Intra) | | 1/50. |
| WB | | 1/1000. Detects a band of approximately 160 kDa (predicted molecular weight: 154 kDa). |

Application notes

Is unsuitable for ChIP, ICC/IF, IHC-P or IP.

Target

Function

Histone demethylase that specifically demethylates 'Lys-27' of histone H3, thereby playing a central role in histone code. Demethylates trimethylated and dimethylated but not monomethylated H3 'Lys-27'. Plays a central role in regulation of posterior development, by regulating HOX gene expression. Demethylation of 'Lys-27' of histone H3 is concomitant with methylation of 'Lys-4' of histone H3, and regulates the recruitment of the PRC1 complex and monoubiquitination of histone H2A.

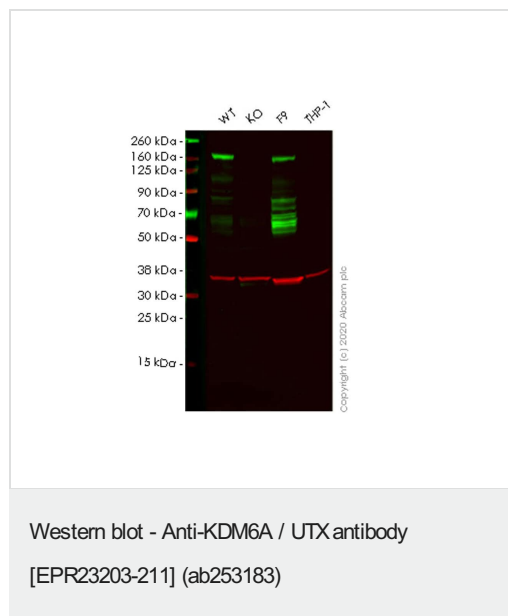
Sequence similarities

Belongs to the UTX family.
Contains 1 JmjC domain.
Contains 8 TPR repeats.

Cellular localization

Nucleus.

Images



All lanes : Anti-KDM6A / UTX antibody [EPR23203-211] (ab253183) at 1/1000 dilution ((0.502 µg/ml))

Lane 1 : Wild-type HAP1 whole cell lysate

Lane 2 : KDM6A knockout HAP1 whole cell lysate

Lane 3 : F9 (mouse embryonal carcinoma epithelial cell), whole cell lysate

Lane 4 : THP-1 (human monocytic leukemia monocyte), whole cell lysate

Lysates/proteins at 20 µg per lane.

Secondary

All lanes : Goat Anti-Rabbit IgG H&L (IRDye® 800CW)

(**ab216773**) and Goat Anti-Mouse IgG H&L (IRDye® 680RD)

(**ab216776**) at 1/20000 dilution

Predicted band size: 154 kDa

Observed band size: 160 kDa

Blocking and diluting buffer and concentration: Intercept® (TBS)
Blocking Buffer diluted with an equal volume of 0.1% TBS.

Lanes 1-4: Merged signal (red and green). Green - ab253183 observed at 160 kDa. Red - loading control **ab8245** (Mouse monoclonal [6C5] to GAPDH) observed at 36 kDa.

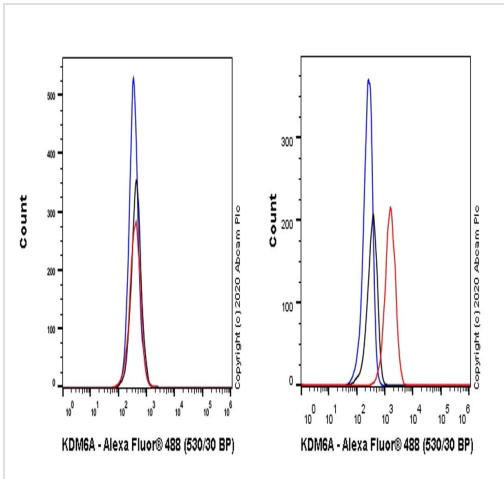
ab253183 Anti-KDM6A antibody [EPR23203-211] was shown to react with KDM6A in HAP1 wild-type cells in Western blot. Loss of signal was observed when KDM6A knockout sample was used. Wild-type and KDM6A knockout samples were subjected to SDS-PAGE.

ab253183 and Anti-GAPDH antibody [6C5] - Loading Control (**ab8245**) were incubated at room temperature for 2.5 hours at 1/1000 dilution and 1 in 20000 dilution respectively. Blots were developed with Goat anti-Rabbit IgG H&L (IRDye® 800CW) preadsorbed (**ab216773**) and Goat anti-Mouse IgG H&L (IRDye® 680RD) preadsorbed (**ab216776**) secondary antibodies at 1 in 20000 dilution for 1 hour at room temperature before imaging.

Negative control: THP-1 (PMID: 19330029).

The expression profile and molecular weight observed is consistent with what has been described in the literature (PMID: 19330029).

The bands between 50kDa and 150kDa are caused by degradation based on the result of fresh lysates.

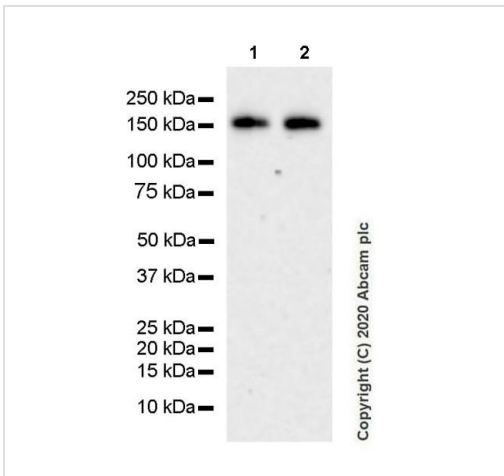


Flow Cytometry (Intracellular) - Anti-KDM6A / UTX antibody [EPR23203-211] (ab253183)

Intracellular flow cytometric analysis of 4% paraformaldehyde fixed, 90% methanol permeabilized THP-1 (Human monocytic leukemia monocyte), (Left panel) / HAP1 (Human chronic myelogenous leukemia near-haploid cell line), (Right panel) cells labelling KDM6A / UTX with ab253183 at 1/50 dilution (1µg) (Red) compared with a Rabbit monoclonal IgG (**ab172730**) isotype control (Black) and an unlabelled control (cells without incubation with primary antibody and secondary antibody) (Blue).

A Goat anti rabbit IgG (Alexa Fluor® 488, **ab150077**) at 1/2000 dilution was used as the secondary antibody.

Negative control: THP-1.



Western blot - Anti-KDM6A / UTX antibody [EPR23203-211] (ab253183)

All lanes : Anti-KDM6A / UTX antibody [EPR23203-211] (ab253183) at 1/1000 dilution ((0.502 µg/ml))

Lane 1 : HEK-293T (human embryonic kidney epithelial cell), whole cell lysate

Lane 2 : NIH/3T3 (mouse embryonic fibroblast), whole cell lysate

Lysates/proteins at 20 µg per lane.

Secondary

All lanes : Goat Anti-Rabbit IgG, (H+L), Peroxidase conjugated (**ab97051**) at 1/100000 dilution

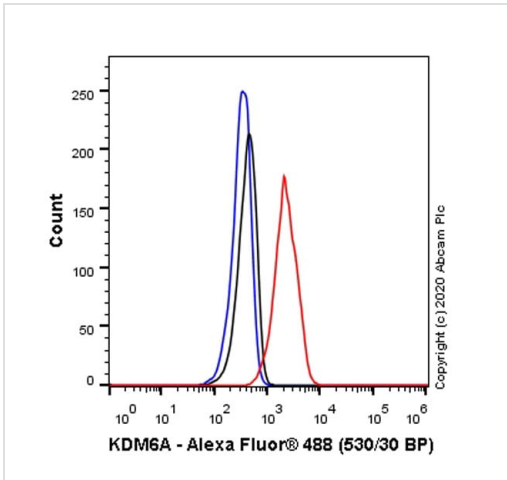
Predicted band size: 154 kDa

Observed band size: 160 kDa

Blocking and diluting buffer and concentration: 5% NFDN/TBST.

Fresh lysates were used in this WB.

Exposure time: 3 minutes.







Flow Cytometry (Intracellular) - Anti-KDM6A / UTX antibody [EPR23203-211] (ab253183)

Intracellular flow cytometric analysis of 4% paraformaldehyde fixed, 90% methanol permeabilized F9 (Mouse embryonal carcinoma epithelial cell) cells labelling KDM6A / UTX with ab253183 at 1/500 dilution (0.1 µg) (Red) compared with a Rabbit monoclonal IgG (**ab172730**) isotype control (Black) and an unlabelled control (cells without incubation with primary antibody and secondary antibody) (Blue).

A Goat anti rabbit IgG (Alexa Fluor® 488, **ab150077**) at 1/2000 dilution was used as the secondary antibody.

Why choose a recombinant antibody?

| | |
|--|--|
|  <p>Research with confidence Consistent and reproducible results</p> |  <p>Long-term and scalable supply Recombinant technology</p> |
|  <p>Success from the first experiment Confirmed specificity</p> |  <p>Ethical standards compliant Animal-free production</p> |

Anti-KDM6A / UTX antibody [EPR23203-211] (ab253183)

Please note: All products are "FOR RESEARCH USE ONLY. NOT FOR USE IN DIAGNOSTIC PROCEDURES"

Our Abpromise to you: Quality guaranteed and expert technical support

- Replacement or refund for products not performing as stated on the datasheet
- Valid for 12 months from date of delivery
- Response to your inquiry within 24 hours
- We provide support in Chinese, English, French, German, Japanese and Spanish

- Extensive multi-media technical resources to help you
- We investigate all quality concerns to ensure our products perform to the highest standards

If the product does not perform as described on this datasheet, we will offer a refund or replacement. For full details of the Abpromise, please visit <https://www.abcam.com/abpromise> or contact our technical team.

Terms and conditions

- Guarantee only valid for products bought direct from Abcam or one of our authorized distributors