


Anti-KDM6B / JMJD3 antibody ab169197

[2 Abreviews](#) [13 References](#) [2 Images](#)

Overview

| | |
|----------------------------|---|
| Product name | Anti-KDM6B / JMJD3 antibody |
| Description | Rabbit polyclonal to KDM6B / JMJD3 |
| Host species | Rabbit |
| Specificity | Replenishment batches of ab169197 are tested in WB. Previous batches were additionally validated in ICC/IF. This application is still expected to work and is covered by our Abpromise guarantee. |
| Tested applications | Suitable for: ICC/IF, WB |
| Species reactivity | Reacts with: Human Predicted to work with: Mouse, Rat, Rabbit, Horse, Cow, Chimpanzee, Macaque monkey, Gorilla  |
| Immunogen | Synthetic peptide corresponding to Mouse KDM6B/ JMJD3 aa 50-150 conjugated to keyhole limpet haemocyanin. Database link: Q5NCY0 |
| Positive control | This antibody gave a positive signal in both HeLa whole cell and HeLa Nuclear lysates. This antibody gave a positive result when used in the following methanol fixed cell lines: MCF-7 |
| General notes | <p>The Life Science industry has been in the grips of a reproducibility crisis for a number of years. Abcam is leading the way in addressing this with our range of recombinant monoclonal antibodies and knockout edited cell lines for gold-standard validation. Please check that this product meets your needs before purchasing.</p> <p>If you have any questions, special requirements or concerns, please send us an inquiry and/or contact our Support team ahead of purchase. Recommended alternatives for this product can be found below, along with publications, customer reviews and Q&As</p> |

Properties

| | |
|-----------------------------|--|
| Form | Liquid |
| Storage instructions | Shipped at 4°C. Store at +4°C short term (1-2 weeks). Upon delivery aliquot. Store at -20°C or -80°C. Avoid freeze / thaw cycle. |
| Storage buffer | pH: 7.40 Preservative: 0.02% Sodium azide Constituent: PBS |

Batches of this product that have a concentration < 1mg/ml may have BSA added as a stabilising agent. If you would like information about the formulation of a specific lot, please contact our scientific support team who will be happy to help.

| | |
|------------------|-----------------------------|
| Purity | Immunogen affinity purified |
| Clonality | Polyclonal |
| Isotype | IgG |

Applications

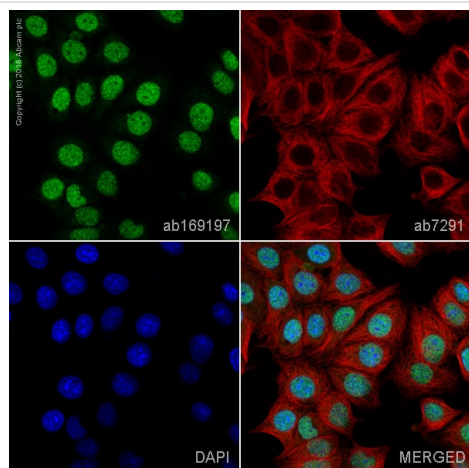
The Abpromise guarantee Our **Abpromise guarantee** covers the use of ab169197 in the following tested applications. The application notes include recommended starting dilutions; optimal dilutions/concentrations should be determined by the end user.

| Application | Abreviews | Notes |
|-------------|-----------|--|
| ICC/IF | | Use a concentration of 5 µg/ml. |
| WB | | Use a concentration of 1 µg/ml. Detects a band of approximately 177 kDa (predicted molecular weight: 177 kDa). |

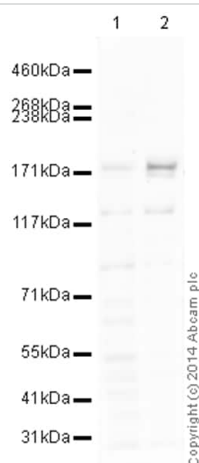
Target

| | |
|------------------------------|--|
| Function | Histone demethylase that specifically demethylates 'Lys-27' of histone H3, thereby playing a central role in histone code. Demethylates trimethylated and dimethylated H3 'Lys-27'. Plays a central role in regulation of posterior development, by regulating HOX gene expression. Involved in inflammatory response by participating in macrophage differentiation in case of inflammation by regulating gene expression and macrophage differentiation. |
| Sequence similarities | Belongs to the UTX family. Contains 1 JmjC domain. |
| Cellular localization | Nucleus. |

Images



Immunocytochemistry/ Immunofluorescence - Anti-KDM6B / JMJD3 antibody (ab169197)



Western blot - Anti-KDM6B / JMJD3 antibody (ab169197)

ab169197 staining KDM6B/JMJD3 in MCF7 cells. The cells were fixed with 100% methanol (5min), permeabilized with 0.1% Triton X-100 for 5 minutes and then blocked with 1% BSA/10% normal goat serum/0.3M glycine in 0.1%PBS-Tween for 1h. The cells were then incubated overnight at +4°C with ab169197 at 1µg/ml and **ab7291**, Mouse monoclonal [DM1A] to alpha Tubulin - Loading Control, at 1/1000 dilution. Cells were then incubated with **ab150120**, Goat polyclonal Secondary Antibody to Mouse at 1/1000 dilution (shown in pseudocolour red) and **ab150081**, Goat polyclonal Secondary Antibody to Rabbit IgG at 1/1000 dilution (shown in green). Nuclear DNA was labelled with DAPI (shown in blue).

All lanes : Anti-KDM6B / JMJD3 antibody (ab169197) at 1 µg/ml

Lane 1 : HeLa (Human epithelial carcinoma cell line) Whole Cell Lysate

Lane 2 : HeLa (Human epithelial carcinoma cell line) Nuclear Lysate

Lysates/proteins at 10 µg per lane.

Secondary

All lanes : Goat Anti-Rabbit IgG H&L (HRP) (**ab97051**) at 1/10000 dilution

Developed using the ECL technique.

Performed under reducing conditions.

Predicted band size: 177 kDa

Observed band size: 177 kDa

Exposure time: 4 minutes

Due to the cellular localisation of KDM6B / JMJD3 an increase in expression is expected within the Nuclear fraction.

This blot was produced using a 3-8% Tris Acetate gel under the TA buffer system. The gel was run at 150V for 60 minutes before being transferred onto a Nitrocellulose membrane at 30V for 70 minutes.

The membrane was then blocked for an hour using 2% Bovine Serum Albumin before being incubated with ab169197 overnight at 4°C. Antibody binding was detected using an anti-rabbit antibody conjugated to HRP, and visualised using ECL development solution.

Please note: All products are "FOR RESEARCH USE ONLY. NOT FOR USE IN DIAGNOSTIC PROCEDURES"

Our Abpromise to you: Quality guaranteed and expert technical support

- Replacement or refund for products not performing as stated on the datasheet
- Valid for 12 months from date of delivery
- Response to your inquiry within 24 hours
- We provide support in Chinese, English, French, German, Japanese and Spanish
- Extensive multi-media technical resources to help you
- We investigate all quality concerns to ensure our products perform to the highest standards

If the product does not perform as described on this datasheet, we will offer a refund or replacement. For full details of the Abpromise, please visit <https://www.abcam.com/abpromise> or contact our technical team.

Terms and conditions

- Guarantee only valid for products bought direct from Abcam or one of our authorized distributors