




## Product datasheet

# Anti-Keap1 antibody ab218815

[13 References](#) [5 Images](#)

### Overview

<b>Product name</b>	Anti-Keap1 antibody
<b>Description</b>	Rabbit polyclonal to Keap1
<b>Host species</b>	Rabbit
<b>Tested applications</b>	<b>Suitable for:</b> ICC/IF, IHC-P
<b>Species reactivity</b>	<b>Reacts with:</b> Human <b>Predicted to work with:</b> Mouse, Rat, Pig, Orangutan 
<b>Immunogen</b>	Recombinant fragment corresponding to Human Keap1 aa 1-150. Database link: <a href="#">Q14145</a>  <a href="#">Run BLAST with</a>  <a href="#">Run BLAST with</a>
<b>Positive control</b>	IHC-P: Human cerebral cortex, skeletal muscle, Fallopian tube and testis tissue. ICC: U-251 MG whole cells.
<b>General notes</b>	<p>The Life Science industry has been in the grips of a reproducibility crisis for a number of years. Abcam is leading the way in addressing this with our range of recombinant monoclonal antibodies and knockout edited cell lines for gold-standard validation. Please check that this product meets your needs before purchasing.</p> <p>If you have any questions, special requirements or concerns, please send us an inquiry and/or contact our Support team ahead of purchase. Recommended alternatives for this product can be found below, along with publications, customer reviews and Q&amp;As</p>

### Properties

<b>Form</b>	Liquid
<b>Storage instructions</b>	Shipped at 4°C. Store at +4°C short term (1-2 weeks). Upon delivery aliquot. Store at -20°C long term. Avoid freeze / thaw cycle.
<b>Storage buffer</b>	pH: 7.20 Preservative: 0.02% Sodium azide Constituents: 40% Glycerol (glycerin, glycerine), 59% PBS
<b>Purity</b>	Immunogen affinity purified
<b>Clonality</b>	Polyclonal
<b>Isotype</b>	IgG

## Applications

### The Abpromise guarantee

Our **Abpromise guarantee** covers the use of ab218815 in the following tested applications.

The application notes include recommended starting dilutions; optimal dilutions/concentrations should be determined by the end user.

Application	Abreviews	Notes
ICC/IF		Use a concentration of 0.25 - 2 µg/ml. Fixation/Permeabilization: PFA/Triton X-100
IHC-P		1/200 - 1/500. Perform heat mediated antigen retrieval with citrate buffer pH 6 before commencing with IHC staining protocol.

## Target

### Function

Retains NFE2L2/NRF2 in the cytosol. Functions as substrate adapter protein for the E3 ubiquitin ligase complex formed by CUL3 and RBX1. Targets NFE2L2/NRF2 for ubiquitination and degradation by the proteasome, thus resulting in the suppression of its transcriptional activity and the repression of antioxidant response element-mediated detoxifying enzyme gene expression. May also retain BPTF in the cytosol. Targets PGAM5 for ubiquitination and degradation by the proteasome.

### Tissue specificity

Broadly expressed, with highest levels in skeletal muscle.

### Sequence similarities

Contains 1 BACK (BTB/Kelch associated) domain.  
Contains 1 BTB (POZ) domain.  
Contains 6 Kelch repeats.

### Domain

The Kelch repeats mediate interaction with NFE2L2/NRF2, BPTF and PGAM5.

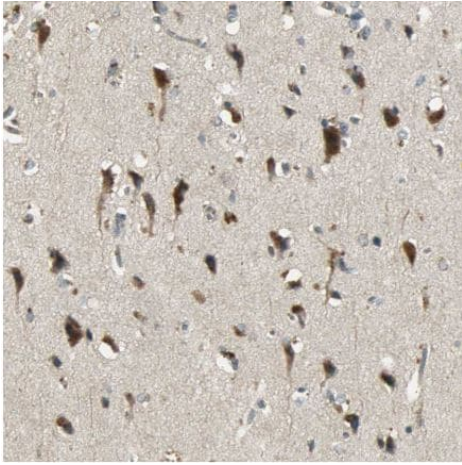
### Post-translational modifications

Ubiquitinated and subject to proteasomal degradation.

### Cellular localization

Cytoplasm. Nucleus. Shuttles between cytoplasm and nucleus.

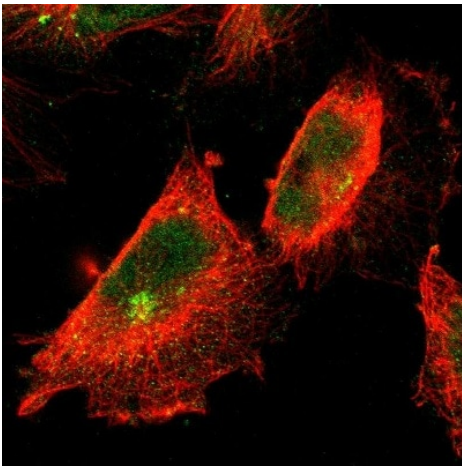
## Images



Immunohistochemistry (Formalin/PFA-fixed paraffin-embedded sections) - Anti-Keap1 antibody (ab218815)

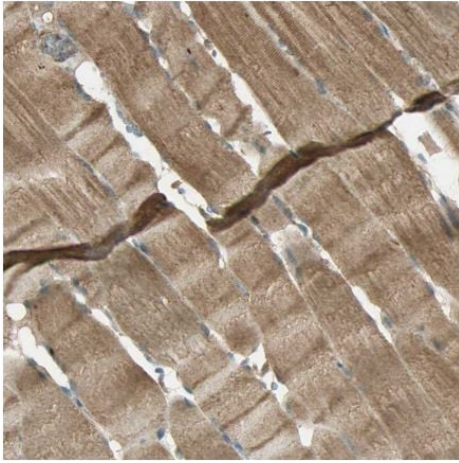
Immunohistochemical analysis of human cerebral cortex tissue labeling Keap1 in the cytoplasm of neurons with ab218815 at a 1/200 dilution.

Performed heat mediated antigen retrieval with citrate buffer pH 6 before commencing with IHC staining protocol.



Immunocytochemistry/ Immunofluorescence - Anti-Keap1 antibody (ab218815)

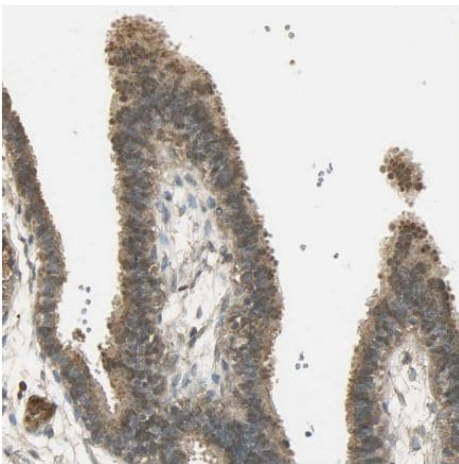
Immunocytochemical analysis of U-251 MG (formally U-373 MG) (Human brain glioma cell line) whole cells labeling Keap1 (green) in the nucleoplasm, cytosol and microtubule organizing center with ab218815 at 2 µg/mL.



Immunohistochemistry (Formalin/PFA-fixed paraffin-embedded sections) - Anti-Keap1 antibody (ab218815)

Immunohistochemical analysis of human skeletal muscle tissue labeling Keap1 in the cytoplasm of myocytes with ab218815 at a 1/200 dilution.

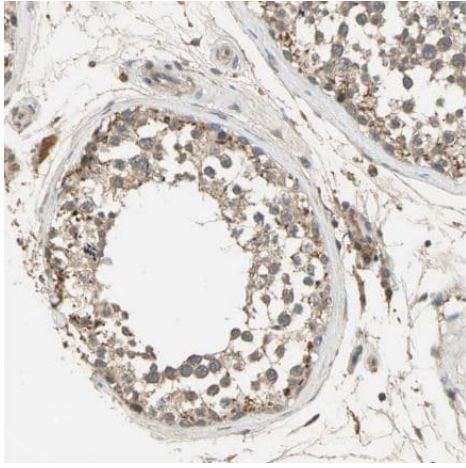
Performed heat mediated antigen retrieval with citrate buffer pH 6 before commencing with IHC staining protocol.



Immunohistochemistry (Formalin/PFA-fixed paraffin-embedded sections) - Anti-Keap1 antibody (ab218815)

Immunohistochemical analysis of human Fallopian tube tissue labeling Keap1 in the cytoplasm of glandular cells with ab218815 at a 1/200 dilution.

Performed heat mediated antigen retrieval with citrate buffer pH 6 before commencing with IHC staining protocol.



Immunohistochemistry (Formalin/PFA-fixed paraffin-embedded sections) - Anti-Keap1 antibody (ab218815)

Immunohistochemical analysis of human testis tissue labeling Keap1 in the cytoplasm of cells in seminiferous ducts with ab218815 at a 1/200 dilution.

Performed heat mediated antigen retrieval with citrate buffer pH 6 before commencing with IHC staining protocol.

**Please note:** All products are "FOR RESEARCH USE ONLY. NOT FOR USE IN DIAGNOSTIC PROCEDURES"

#### Our Abpromise to you: Quality guaranteed and expert technical support

---

- Replacement or refund for products not performing as stated on the datasheet
- Valid for 12 months from date of delivery
- Response to your inquiry within 24 hours
- We provide support in Chinese, English, French, German, Japanese and Spanish
- Extensive multi-media technical resources to help you
- We investigate all quality concerns to ensure our products perform to the highest standards

If the product does not perform as described on this datasheet, we will offer a refund or replacement. For full details of the Abpromise, please visit <https://www.abcam.com/abpromise> or contact our technical team.

#### Terms and conditions

---

- Guarantee only valid for products bought direct from Abcam or one of our authorized distributors