


Product datasheet

Anti-ketohexokinase antibody ab154405

[2 References](#) [3 Images](#)

Overview

Product name	Anti-ketohexokinase antibody
Description	Rabbit polyclonal to ketohexokinase
Host species	Rabbit
Tested applications	Suitable for: WB, IHC-P
Species reactivity	Reacts with: Mouse, Human Predicted to work with: Rat 
Immunogen	A recombinant protein fragment corresponding to a region within amino acids 1-248 of Human ketohexokinase (UniProt ID: P50053).
Positive control	HeLa and HepG2 whole cell lysates; mouse liver tissue lysate; A549 xenograft
General notes	<p>The Life Science industry has been in the grips of a reproducibility crisis for a number of years. Abcam is leading the way in addressing this with our range of recombinant monoclonal antibodies and knockout edited cell lines for gold-standard validation. Please check that this product meets your needs before purchasing.</p> <p>If you have any questions, special requirements or concerns, please send us an inquiry and/or contact our Support team ahead of purchase. Recommended alternatives for this product can be found below, along with publications, customer reviews and Q&As</p>

Properties

Form	Liquid
Storage instructions	Shipped at 4°C. Upon delivery aliquot. Store at -20°C or -80°C. Avoid freeze / thaw cycle.
Storage buffer	pH: 7.00 Preservative: 0.025% Proclin 300 Constituents: 78% PBS, 1% BSA, 20% Glycerol (glycerin, glycerine)
Purity	Immunogen affinity purified
Clonality	Polyclonal
Isotype	IgG

Applications

The Abpromise guarantee

Our **Abpromise guarantee** covers the use of ab154405 in the following tested applications.

The application notes include recommended starting dilutions; optimal dilutions/concentrations should be determined by the end user.

Application	Abreviews	Notes
WB		1/1000 - 1/10000. Predicted molecular weight: 33 kDa.
IHC-P		1/100 - 1/1000. Perform heat mediated antigen retrieval with citrate buffer pH 6 before commencing with IHC staining protocol. Tris-EDTA buffer (pH 8.0) can also be used.

Target

Tissue specificity

Most abundant in liver, kidney, gut, spleen and pancreas. Low levels also found in adrenal, muscle, brain and eye.

Pathway

Carbohydrate metabolism; fructose metabolism.

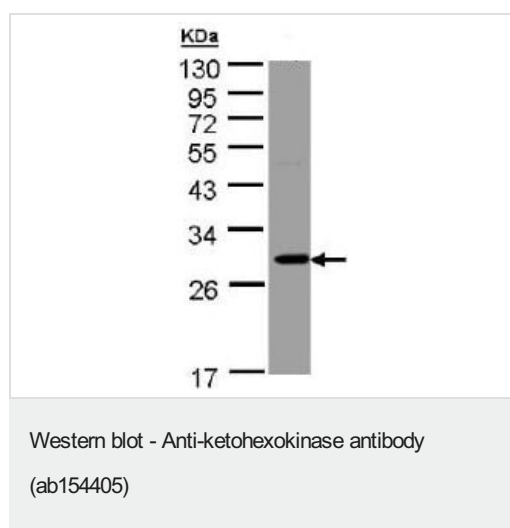
Involvement in disease

Defects in KHK are the cause of fructosuria (FRUCT) [MIM:229800]. Fructosuria is a benign defect of intermediary metabolism.

Sequence similarities

Belongs to the carbohydrate kinase pfkB family.

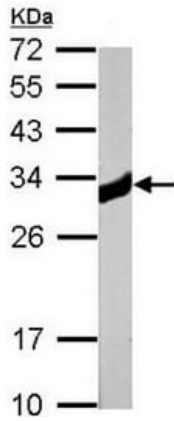
Images



Anti-ketohexokinase antibody (ab154405) at 1/1000 dilution + HeLa whole cell lysate at 30 µg

Predicted band size: 33 kDa

12% SDS PAGE

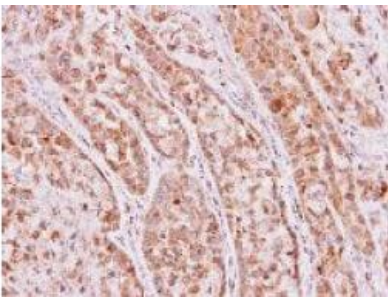


Western blot - Anti-ketohexokinase antibody
(ab154405)

Anti-ketohexokinase antibody (ab154405) at 1/10000 dilution +
mouse liver tissue lysate at 20 µg

Predicted band size: 33 kDa

12% SDS PAGE



Immunohistochemistry (Formalin/PFA-fixed paraffin-
embedded sections) - Anti-ketohexokinase antibody
(ab154405)

Immunohistochemical analysis of paraffin-embedded A549
xenograft labeling ketohexokinase using ab154405 at 1/500
dilution.

Please note: All products are "FOR RESEARCH USE ONLY. NOT FOR USE IN DIAGNOSTIC PROCEDURES"

Our Abpromise to you: Quality guaranteed and expert technical support

- Replacement or refund for products not performing as stated on the datasheet
- Valid for 12 months from date of delivery
- Response to your inquiry within 24 hours
- We provide support in Chinese, English, French, German, Japanese and Spanish
- Extensive multi-media technical resources to help you
- We investigate all quality concerns to ensure our products perform to the highest standards

If the product does not perform as described on this datasheet, we will offer a refund or replacement. For full details of the Abpromise, please visit <https://www.abcam.com/abpromise> or contact our technical team.

Terms and conditions

- Guarantee only valid for products bought direct from Abcam or one of our authorized distributors