

Product datasheet

Anti-ketohexokinase antibody [EPR15847] α b197593

KO VALIDATED

Recombinant

RabMAb

[1 References](#) [7 Images](#)

Overview

Product name	Anti-ketohexokinase antibody [EPR15847]
Description	Rabbit monoclonal [EPR15847] to ketohexokinase
Host species	Rabbit
Tested applications	Suitable for: WB, IHC-P, ICC/IF, IP
Species reactivity	Reacts with: Mouse, Rat, Human
Immunogen	Synthetic peptide. This information is proprietary to Abcam and/or its suppliers.
Positive control	WB: HEK293T cell lysate; Human fetal kidney and fetal liver lysates; Mouse kidney, mouse liver, rat kidney and rat liver lysates. IHC-P: Human liver tissue. ICC/IF: HepG2 cells. IP: Human fetal kidney lysate.
General notes	<p>This product is a recombinant monoclonal antibody, which offers several advantages including:</p> <ul style="list-style-type: none"> - High batch-to-batch consistency and reproducibility - Improved sensitivity and specificity - Long-term security of supply - Animal-free production <p>For more information see here.</p> <p>Our RabMAb[®] technology is a patented hybridoma-based technology for making rabbit monoclonal antibodies. For details on our patents, please refer to RabMAb[®] patents.</p>

Properties

Form	Liquid
Storage instructions	Shipped at 4°C. Store at +4°C short term (1-2 weeks). Upon delivery aliquot. Store at -20°C long term. Avoid freeze / thaw cycle.
Storage buffer	<p>pH: 7.20</p> <p>Preservative: 0.01% Sodium azide</p> <p>Constituents: 59% PBS, 40% Glycerol, 0.05% BSA</p>
Purity	Protein A purified
Clonality	Monoclonal
Clone number	EPR15847

Isotype

IgG

Applications

The Abpromise guarantee

Our **Abpromise guarantee** covers the use of ab197593 in the following tested applications.

The application notes include recommended starting dilutions; optimal dilutions/concentrations should be determined by the end user.

Application	Abreviews	Notes
WB		1/2500. Detects a band of approximately 33 kDa (predicted molecular weight: 33 kDa).
IHC-P		1/500. Perform heat mediated antigen retrieval with Tris/EDTA buffer pH 9.0 before commencing with IHC staining protocol.
ICC/IF		1/1000.
IP		1/100.

Target

Tissue specificity

Most abundant in liver, kidney, gut, spleen and pancreas. Low levels also found in adrenal, muscle, brain and eye.

Pathway

Carbohydrate metabolism; fructose metabolism.

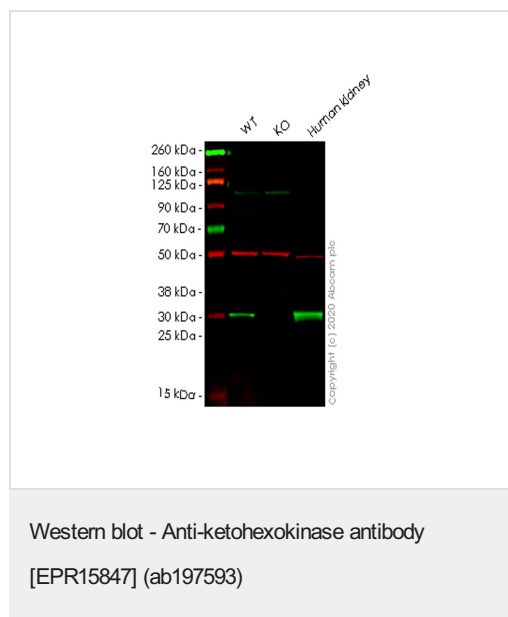
Involvement in disease

Defects in KHK are the cause of fructosuria (FRUCT) [MIM:229800]. Fructosuria is a benign defect of intermediary metabolism.

Sequence similarities

Belongs to the carbohydrate kinase pfkB family.

Images



All lanes : Anti-ketohexokinase antibody [EPR15847] (ab197593) at 1/1000 dilution

Lane 1 : Wild-type HEK293T cell lysate

Lane 2 : KHK knockout HEK293T cell lysate

Lane 3 : Human kidney tissue lysate

Lysates/proteins at 20 µg per lane.

Secondary

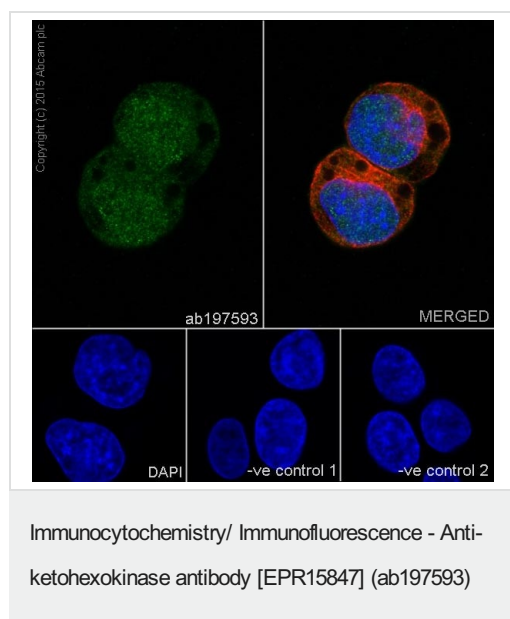
All lanes : Goat anti-Rabbit IgG H&L (IRDye® 800CW) preadsorbed ([ab216773](#)) at 1/10000 dilution

Predicted band size: 33 kDa

Observed band size: 33 kDa

Lanes 1-3: Merged signal (red and green). Green - ab197593 observed at 33 kDa. Red - loading control **ab7291** observed at 50 kDa.

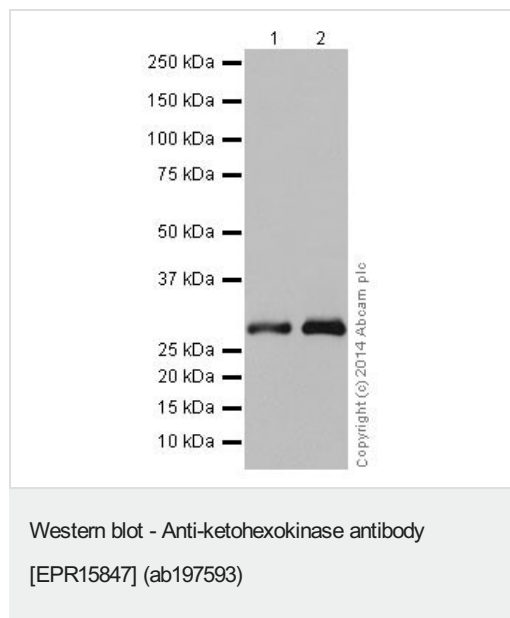
ab197593 Anti-ketohexokinase antibody [EPR15847] was shown to specifically react with ketohexokinase in wild-type HEK293T cells. Loss of signal was observed when knockout cell line **ab267292** (knockout cell lysate **ab258017**) was used. Wild-type and ketohexokinase knockout samples were subjected to SDS-PAGE. ab197593 and Anti-alpha Tubulin antibody [DM1A] - Loading Control (**ab7291**) were incubated overnight at 4°C at 1 in 1000 dilution and 1 in 20000 dilution respectively. Blots were developed with Goat anti-Rabbit IgG H&L (IRDye® 800CW) preadsorbed (**ab216773**) and Goat anti-Mouse IgG H&L (IRDye® 680RD) preadsorbed (**ab216776**) secondary antibodies at 1 in 20000 dilution for 1 hour at room temperature before imaging.



Immunofluorescent analysis of 4% paraformaldehyde-fixed, 0.1% Triton X-100 permeabilized HepG2 (Human liver hepatocellular carcinoma) cells labeling ketohexokinase with ab197593 at 1/1000 dilution, followed by Goat anti-rabbit IgG (Alexa Fluor® 488) (**ab150077**) secondary antibody at 1/500 dilution (green). Cytoplasm and nuclear staining on HepG2 cell line is observed. The nuclear counter stain is DAPI (blue). Tubulin is detected with **ab7291** (anti-Tubulin mouse mAb) at 1/1000 dilution and **ab150120** (AlexaFluor®594 Goat anti-Mouse secondary) at 1/500 dilution (red).

The negative controls are as follows:

-ve control 1: ab197593 at 1/1000 dilution followed by **ab150120** (AlexaFluor®594 Goat anti-Mouse secondary) at 1/500 dilution.
 -ve control 2: **ab7291** (anti-Tubulin mouse mAb) at 1/1000 dilution followed by **ab150077** (Alexa Fluor®488 Goat Anti-Rabbit IgG H&L) at 1/500 dilution.



All lanes : Anti-ketohexokinase antibody [EPR15847] (ab197593)
at 1/5000 dilution

Lane 1 : Human fetal kidney lysate

Lane 2 : Human fetal liver lysate

Lysates/proteins at 20 µg per lane.

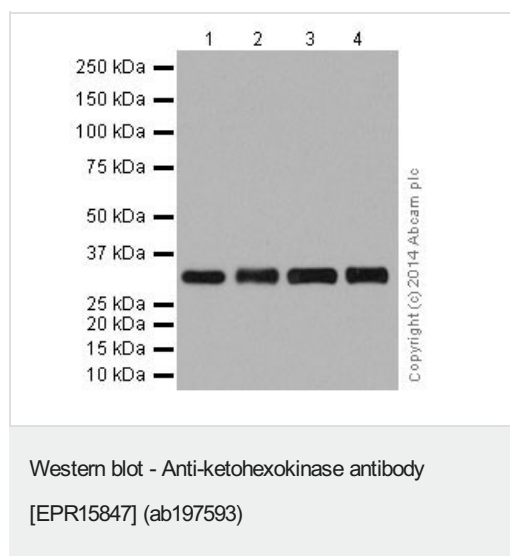
Secondary

All lanes : Goat Anti-Rabbit IgG, (H+L), Peroxidase conjugated at
1/1000 dilution

Predicted band size: 33 kDa

Observed band size: 33 kDa

Blocking/Dilution buffer: 5% NFDM/TBST.



All lanes : Anti-ketohexokinase antibody [EPR15847] (ab197593)
at 1/2500 dilution

Lane 1 : Mouse kidney lysate

Lane 2 : Mouse liver lysate

Lane 3 : Rat kidney lysate

Lane 4 : Rat liver lysate

Lysates/proteins at 10 µg per lane.

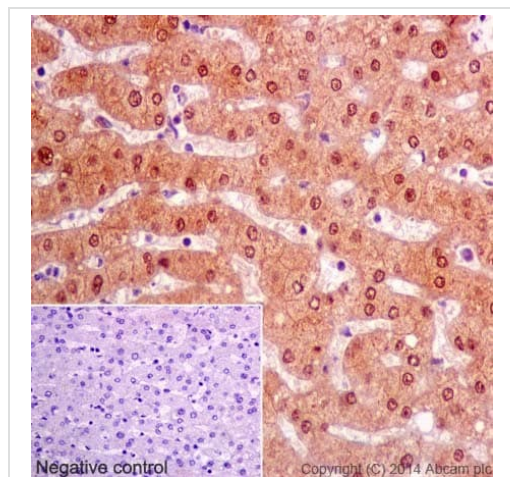
Secondary

All lanes : Goat Anti-Rabbit IgG, (H+L), Peroxidase conjugated at
1/1000 dilution

Predicted band size: 33 kDa

Observed band size: 33 kDa

Blocking/Dilution buffer: 5% NFDM/TBST.

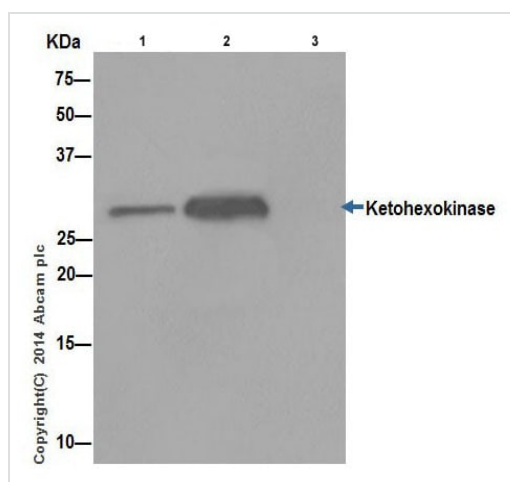


Immunohistochemistry (Formalin/PFA-fixed paraffin-embedded sections) - Anti-ketohexokinase antibody [EPR15847] (ab197593)

Immunohistochemical analysis of paraffin-embedded Human liver tissue labeling ketohexokinase with ab197593 at 1/500 dilution, followed by Goat Anti-Rabbit IgG H&L (HRP) ([ab97051](#)) secondary antibody at 1/500 dilution. Cytoplasm and nuclear staining on Human liver tissues is observed. Counter stained with Hematoxylin.

Negative control: Used PBS instead of primary antibody, secondary antibody is Goat Anti-Rabbit IgG H&L (HRP) ([ab97051](#)) at 1/500 dilution.

Perform heat mediated antigen retrieval with Tris/EDTA buffer pH 9.0 before commencing with IHC staining protocol.



Immunoprecipitation - Anti-ketohexokinase antibody [EPR15847] (ab197593)

Ketohexokinase was immunoprecipitated from Human fetal kidney lysate with ab197593 at 1/100 dilution. Western blot was performed from the immunoprecipitate using ab197593 at 1/2000 dilution. Anti-Rabbit IgG (HRP), specific to the non-reduced form of IgG, was used as secondary antibody at 1/1500 dilution.

Lane 1: Human fetal kidney lysate 10 μ g (Input). Lane 2: ab197593 IP in Human fetal kidney lysate. Lane 3: Rabbit monoclonal IgG ([ab172730](#)) instead of ab197593 in Human fetal kidney lysate.

Blocking and dilution buffer and concentration: 5% NFDM/TBST.

Why choose a recombinant antibody?



Research with confidence
Consistent and reproducible results



Long-term and scalable supply
Recombinant technology



Success from the first experiment
Confirmed specificity



Ethical standards compliant
Animal-free production

Anti-ketohexokinase antibody [EPR15847]
(ab197593)

Please note: All products are "FOR RESEARCH USE ONLY. NOT FOR USE IN DIAGNOSTIC PROCEDURES"

Our Abpromise to you: Quality guaranteed and expert technical support

- Replacement or refund for products not performing as stated on the datasheet
- Valid for 12 months from date of delivery
- Response to your inquiry within 24 hours
- We provide support in Chinese, English, French, German, Japanese and Spanish
- Extensive multi-media technical resources to help you
- We investigate all quality concerns to ensure our products perform to the highest standards

If the product does not perform as described on this datasheet, we will offer a refund or replacement. For full details of the Abpromise, please visit <https://www.abcam.com/abpromise> or contact our technical team.

Terms and conditions

- Guarantee only valid for products bought direct from Abcam or one of our authorized distributors