


Product datasheet

Anti-KHSRP antibody [EPR9864] ab150393

Recombinant RabMAb

[6 References](#) [6 Images](#)

Overview

Product name	Anti-KHSRP antibody [EPR9864]
Description	Rabbit monoclonal [EPR9864] to KHSRP
Host species	Rabbit
Tested applications	Suitable for: WB, IHC-P, ICC/IF, Flow Cyt (Intra)
Species reactivity	Reacts with: Human Predicted to work with: Mouse, Rat 
Immunogen	Synthetic peptide. This information is proprietary to Abcam and/or its suppliers.
Positive control	293T, HeLa, MCF7 and A673 cell lysates; Human brain and colon tissues; MCF7 cells.
General notes	This product is a recombinant monoclonal antibody, which offers several advantages including: <ul style="list-style-type: none"> - High batch-to-batch consistency and reproducibility - Improved sensitivity and specificity - Long-term security of supply - Animal-free production For more information see here . Our RabMAb [®] technology is a patented hybridoma-based technology for making rabbit monoclonal antibodies. For details on our patents, please refer to RabMAb[®] patents .

Properties

Form	Liquid
Storage instructions	Shipped at 4°C. Store at -20°C.
Storage buffer	pH: 7.2 Preservative: 0.01% Sodium azide Constituents: 9% PBS, 40% Glycerol (glycerin, glycerine), 0.05% BSA, 50% Tissue culture supernatant
Purity	Protein A purified
Clonality	Monoclonal
Clone number	EPR9864
Isotype	IgG

Applications

The Abpromise guarantee Our **Abpromise guarantee** covers the use of ab150393 in the following tested applications.

The application notes include recommended starting dilutions; optimal dilutions/concentrations should be determined by the end user.

Application	Abreviews	Notes
WB		1/1000 - 1/10000. Predicted molecular weight: 73 kDa.
IHC-P		1/100 - 1/250. Perform heat mediated antigen retrieval with citrate buffer pH 6 before commencing with IHC staining protocol.
ICC/IF		1/100 - 1/250.
Flow Cyt (Intra)		1/2000.

Target

Function Binds to the dendritic targeting element and may play a role in mRNA trafficking (By similarity). Part of a ternary complex that binds to the downstream control sequence (DCS) of the pre-mRNA. Mediates exon inclusion in transcripts that are subject to tissue-specific alternative splicing. May interact with single-stranded DNA from the far-upstream element (FUSE). May activate gene expression. Also involved in degradation of inherently unstable mRNAs that contain AU-rich elements (AREs) in their 3'-UTR, possibly by recruiting degradation machinery to ARE-containing mRNAs.

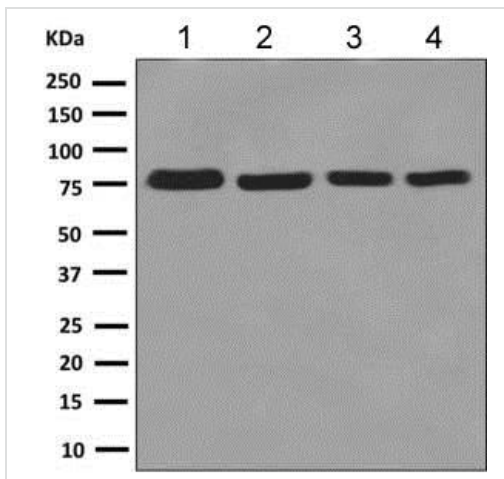
Tissue specificity Detected in neural and non-neural cell lines.

Sequence similarities Belongs to the KHSRP family.
Contains 4 KH domains.

Post-translational modifications Phosphorylated upon DNA damage, probably by ATM or ATR.

Cellular localization Nucleus. Cytoplasm. A small proportion is also found in the cytoplasm of neuronal cell bodies and dendrites.

Images



Western blot - Anti-KHSRP antibody [EPR9864] (ab150393)

All lanes : Anti-KHSRP antibody [EPR9864] (ab150393) at 1/1000 dilution

Lane 1 : 293T cell lysate

Lane 2 : HeLa cell lysate

Lane 3 : A673 cell lysate

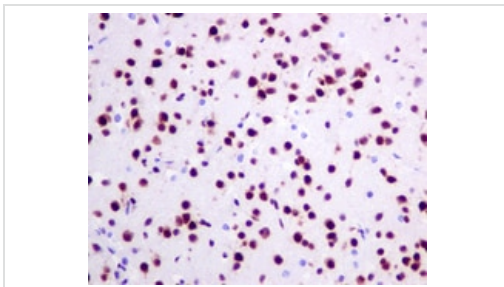
Lane 4 : MCF7 cell lysate

Lysates/proteins at 10 µg per lane.

Secondary

All lanes : HRP labelled Goat anti-rabbit at 1/2000 dilution

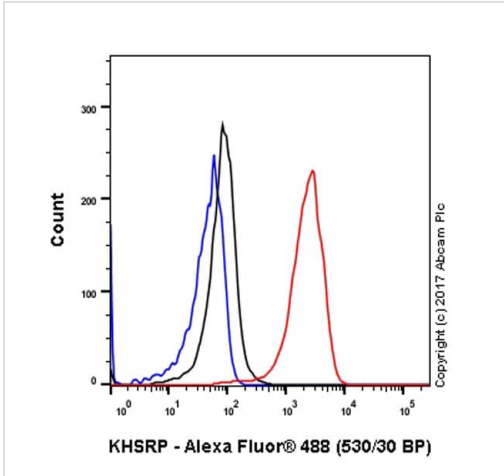
Predicted band size: 73 kDa



Immunohistochemistry (Formalin/PFA-fixed paraffin-embedded sections) - Anti-KHSRP antibody [EPR9864] (ab150393)

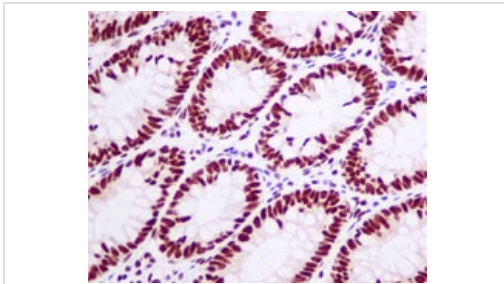
Immunohistochemical analysis of paraffin-embedded Human brain tissue labelling KHSRP with ab150393 at 1/100 dilution.

Perform heat mediated antigen retrieval with citrate buffer pH 6 before commencing with IHC staining protocol.



Flow Cytometry (Intracellular) - Anti-KHSRP antibody [EPR9864] (ab150393)

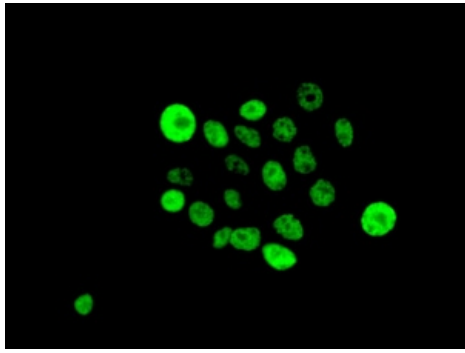
Intracellular Flow Cytometry analysis of HeLa (Human cervix adenocarcinoma epithelial cell) cells labeling KHSRP (red) with purified ab150393 at a 1/2000 dilution (1ug/mL). Cells were fixed with 4% paraformaldehyde and permeabilized with 90% methanol. A goat anti rabbit IgG (Alexa Fluor® 488) (**ab150077**) was used as the secondary antibody at a 1/2000 dilution. Black - Rabbit monoclonal IgG (Black) (**ab172730**). Blue (unlabeled control) - Cell without incubation with primary antibody and secondary antibody (Blue).



Immunohistochemistry (Formalin/PFA-fixed paraffin-embedded sections) - Anti-KHSRP antibody [EPR9864] (ab150393)

Immunohistochemical analysis of paraffin-embedded Human colon tissue labelling KHSRP with ab150393 at 1/100 dilution.

Perform heat mediated antigen retrieval with citrate buffer pH 6 before commencing with IHC staining protocol.



Immunofluorescent analysis of MCF7 cells labelling KHSRP with ab150393 at 1/100 dilution.

Immunocytochemistry/ Immunofluorescence - Anti-KHSRP antibody [EPR9864] (ab150393)

Why choose a recombinant antibody?



Research with confidence
Consistent and reproducible results



Long-term and scalable supply
Recombinant technology



Success from the first experiment
Confirmed specificity



Ethical standards compliant
Animal-free production

Anti-KHSRP antibody [EPR9864] (ab150393)

Please note: All products are "FOR RESEARCH USE ONLY. NOT FOR USE IN DIAGNOSTIC PROCEDURES"

Our Abpromise to you: Quality guaranteed and expert technical support

- Replacement or refund for products not performing as stated on the datasheet
- Valid for 12 months from date of delivery
- Response to your inquiry within 24 hours
- We provide support in Chinese, English, French, German, Japanese and Spanish
- Extensive multi-media technical resources to help you
- We investigate all quality concerns to ensure our products perform to the highest standards

If the product does not perform as described on this datasheet, we will offer a refund or replacement. For full details of the Abpromise, please visit <https://www.abcam.com/abpromise> or contact our technical team.

Terms and conditions

- Guarantee only valid for products bought direct from Abcam or one of our authorized distributors