


Product datasheet

Anti-KIAA1688 antibody ab93780

2 Images

Overview

Product name	Anti-KIAA1688 antibody
Description	Rabbit polyclonal to KIAA1688
Host species	Rabbit
Tested applications	Suitable for: WB, IP
Species reactivity	Reacts with: Human Predicted to work with: Chimpanzee, Rhesus monkey, Gorilla, Tilapia 
Immunogen	Synthetic peptide corresponding to Human KIAA1688 aa 50-150. Database link: Q9C0H5
Positive control	HeLa cell lysate 293 T cell lysate
General notes	<p>The Life Science industry has been in the grips of a reproducibility crisis for a number of years. Abcam is leading the way in addressing this with our range of recombinant monoclonal antibodies and knockout edited cell lines for gold-standard validation. Please check that this product meets your needs before purchasing.</p> <p>If you have any questions, special requirements or concerns, please send us an inquiry and/or contact our Support team ahead of purchase. Recommended alternatives for this product can be found below, along with publications, customer reviews and Q&As</p>

Properties

Form	Liquid
Storage instructions	Shipped at 4°C. Upon delivery aliquot and store at -20°C. Avoid freeze / thaw cycles.
Storage buffer	pH: 7 Preservative: 0.09% Sodium azide Constituent: Tris citrate/phosphate
Purity	Immunogen affinity purified
Clonality	Polyclonal
Isotype	IgG

Applications

The Abpromise guarantee

Our **Abpromise guarantee** covers the use of ab93780 in the following tested applications.

The application notes include recommended starting dilutions; optimal dilutions/concentrations should be determined by the end user.

Application	Abreviews	Notes
WB		1/2000 - 1/10000. Predicted molecular weight: 121 kDa.
IP		Use at 5-15 µg/mg of lysate.

Target

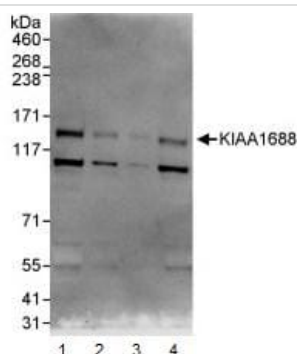
Relevance

KIAA1688 was identified as a hypothetical protein predicted from the in silico analysis of long cDNAs isolated in the Kazusa cDNA sequencing project. The function of KIAA1688 has not been characterized.

Cellular localization

Nuclear

Images



Western blot - Anti-KIAA1688 antibody (ab93780)

All lanes : Anti-KIAA1688 antibody (ab93780) at 0.1 µg/ml

Lane 1 : HeLa cell lysate at 50 µg

Lane 2 : HeLa cell lysate at 15 µg

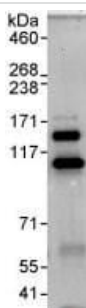
Lane 3 : HeLa cell lysate at 5 µg

Lane 4 : 293T cell lysate at 50 µg

Developed using the ECL technique.

Predicted band size: 121 kDa

Exposure time: 3 minutes



Immunoprecipitation - Anti-KIAA1688 antibody (ab93780)

Immunoprecipitation : 1 mg of HeLa cell lysate

immunoprecipitated with ab93780 at 10 µg/mg lysate; 20% of immunoprecipitate loaded in lane

Western Blot : KIAA1688 antibody (ab93780) at 1 µg/ml

Developed using the ECL technique

Exposure time : 3 minutes

Please note: All products are "FOR RESEARCH USE ONLY. NOT FOR USE IN DIAGNOSTIC PROCEDURES"

Our Abpromise to you: Quality guaranteed and expert technical support

- Replacement or refund for products not performing as stated on the datasheet
- Valid for 12 months from date of delivery
- Response to your inquiry within 24 hours

- We provide support in Chinese, English, French, German, Japanese and Spanish
- Extensive multi-media technical resources to help you
- We investigate all quality concerns to ensure our products perform to the highest standards

If the product does not perform as described on this datasheet, we will offer a refund or replacement. For full details of the Abpromise, please visit <https://www.abcam.com/abpromise> or contact our technical team.

Terms and conditions

- Guarantee only valid for products bought direct from Abcam or one of our authorized distributors