


Product datasheet

Anti-KIF14 antibody ab3746

[7 References](#) [1 Image](#)

Overview

Product name	Anti-KIF14 antibody
Description	Rabbit polyclonal to KIF14
Host species	Rabbit
Tested applications	Suitable for: IP
Species reactivity	Reacts with: Human Predicted to work with: Chimpanzee, Rhesus monkey, Gorilla 
Immunogen	Synthetic peptide corresponding to Human KIF14 aa 50-150. Database link: Q15058
General notes	<p>The Life Science industry has been in the grips of a reproducibility crisis for a number of years. Abcam is leading the way in addressing this with our range of recombinant monoclonal antibodies and knockout edited cell lines for gold-standard validation. Please check that this product meets your needs before purchasing.</p> <p>If you have any questions, special requirements or concerns, please send us an inquiry and/or contact our Support team ahead of purchase. Recommended alternatives for this product can be found below, along with publications, customer reviews and Q&As</p>

Properties

Form	Liquid
Storage instructions	Shipped at 4°C. Upon delivery aliquot and store at -20°C. Avoid freeze / thaw cycles.
Storage buffer	pH: 7 Preservative: 0.1% Sodium azide Constituents: 0.021% PBS, 1.764% Sodium citrate, 1.815% Tris
Purity	Immunogen affinity purified
Clonality	Polyclonal
Isotype	IgG

Applications

The Abpromise guarantee Our **Abpromise guarantee** covers the use of ab3746 in the following tested applications.

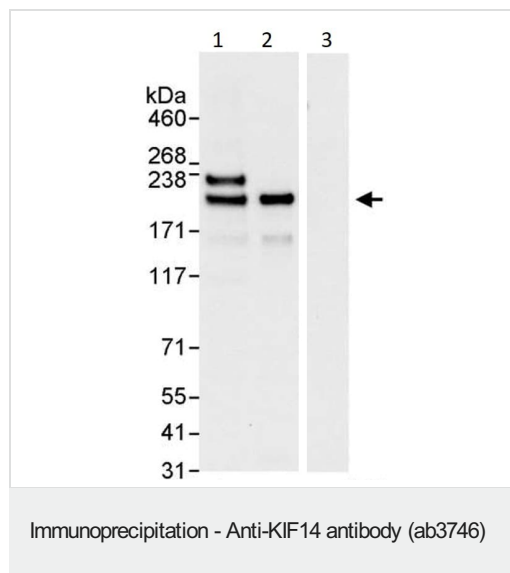
The application notes include recommended starting dilutions; optimal dilutions/concentrations should be determined by the end user.

Application	Abreviews	Notes
IP		Use at 1-4 µg/mg of lysate.

Target

Function	Plays an essential role in cytokinesis.
Sequence similarities	Belongs to the kinesin-like protein family. Contains 1 FHA domain. Contains 1 kinesin-motor domain.
Developmental stage	Up-regulated in cells progressing through G2/M phase.
Cellular localization	Nucleus. Cytoplasm. Cytoplasm > cytoskeleton > spindle. Nuclear localization observed during interphase in PubMed:16431929 or triggered by entry into mitosis in PubMed:16648480. Cytoplasmic in interphase (PubMed:16648480) and metaphase cells (PubMed:16431929). From prophase to metaphase, accumulates at the developing spindle poles and their associated microtubules. During anaphase, accumulates at the spindle midzone. Localization to the central spindle and midbody during anaphase is dependent upon PRC1 and CIT presence. In cells ready to undergo abscission, concentrates at the contractile ring.

Images



KIF14 was immunoprecipitated from 50 µg/ml and 1 mg of HeLa (Human cervix adenocarcinoma epithelial cell) whole cell lysate with ab3746 at 3 µg/ml. Western blot was performed from the immunoprecipitate using ab3746 at 1 µg/ml.

Lane 1: HeLa whole cell lysate 50 µg (Input).

Lane 2: ab3746 IP in HeLa whole cell lysate.

Lane 3: Ctrl IgG instead of ab3746.

Please note: All products are "FOR RESEARCH USE ONLY. NOT FOR USE IN DIAGNOSTIC PROCEDURES"

Our Abpromise to you: Quality guaranteed and expert technical support

- Replacement or refund for products not performing as stated on the datasheet
- Valid for 12 months from date of delivery
- Response to your inquiry within 24 hours

- We provide support in Chinese, English, French, German, Japanese and Spanish
- Extensive multi-media technical resources to help you
- We investigate all quality concerns to ensure our products perform to the highest standards

If the product does not perform as described on this datasheet, we will offer a refund or replacement. For full details of the Abpromise, please visit <https://www.abcam.com/abpromise> or contact our technical team.

Terms and conditions

- Guarantee only valid for products bought direct from Abcam or one of our authorized distributors