

## Product datasheet

# Anti-KIF1A antibody [EPR11790(B)] ab180153

Recombinant RabMAb

★★★★☆ [1 Abreviews](#) [6 References](#) [11 Images](#)

### Overview

<b>Product name</b>	Anti-KIF1A antibody [EPR11790(B)]
<b>Description</b>	Rabbit monoclonal [EPR11790(B)] to KIF1A
<b>Host species</b>	Rabbit
<b>Tested applications</b>	<b>Suitable for:</b> Flow Cyt (Intra), WB, ICC/IF, IP <b>Unsuitable for:</b> IHC-P
<b>Species reactivity</b>	<b>Reacts with:</b> Rat, Human
<b>Immunogen</b>	Synthetic peptide within Human KIF1A aa 900-1000. The exact sequence is proprietary. Database link: <a href="#">Q12756</a>
<b>Positive control</b>	HEK-293 cells, Human fetal brain lysates, SH-SY5Y cells, U-87 MG cells, rat hypothalamus lysate and rat brain lysate.
<b>General notes</b>	This product is a recombinant monoclonal antibody, which offers several advantages including: <ul style="list-style-type: none"><li>- High batch-to-batch consistency and reproducibility</li><li>- Improved sensitivity and specificity</li><li>- Long-term security of supply</li><li>- Animal-free production</li></ul> For more information <a href="#">see here</a> . Our RabMAb <sup>®</sup> technology is a patented hybridoma-based technology for making rabbit monoclonal antibodies. For details on our patents, please refer to <a href="#">RabMAb<sup>®</sup> patents</a> .

### Properties

<b>Form</b>	Liquid
<b>Storage instructions</b>	Shipped at 4°C. Store at +4°C short term (1-2 weeks). Upon delivery aliquot. Store at -20°C long term. Avoid freeze / thaw cycle.
<b>Storage buffer</b>	Preservative: 0.01% Sodium azide Constituents: 59% PBS, 40% Glycerol (glycerin, glycerine), 0.05% BSA
<b>Purity</b>	Protein A purified
<b>Clonality</b>	Monoclonal
<b>Clone number</b>	EPR11790(B)

Isotype

IgG

## Applications

### The Abpromise guarantee

Our **Abpromise guarantee** covers the use of ab180153 in the following tested applications.

The application notes include recommended starting dilutions; optimal dilutions/concentrations should be determined by the end user.

Application	Abreviews	Notes
Flow Cyt (Intra)		1/100. <b>ab172730</b> - Rabbit monoclonal IgG, is suitable for use as an isotype control with this antibody.
WB	★★★★★ (1)	1/5000 - 1/10000. Detects a band of approximately 191 kDa (predicted molecular weight: 191 kDa).
ICC/IF		1/100.
IP		1/50.

### Application notes

Is unsuitable for IHC-P.

## Target

### Function

Motor for anterograde axonal transport of synaptic vesicle precursors.

### Sequence similarities

Belongs to the kinesin-like protein family. Unc-104 subfamily.

Contains 1 FHA domain.

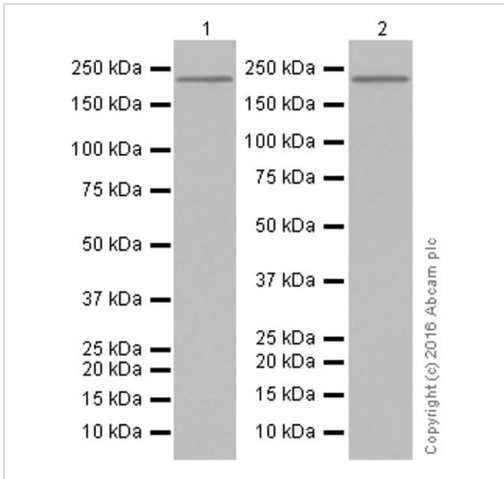
Contains 1 kinesin-motor domain.

Contains 1 PH domain.

### Cellular localization

Cytoplasm > cytoskeleton.

## Images



Western blot - Anti-KIF1A antibody [EPR11790(B)] (ab180153)

**All lanes :** Anti-KIF1A antibody [EPR11790(B)] (ab180153) at 1/1000 dilution (purified)

**Lane 1 :** Rat hypothalamus lysate

**Lane 2 :** Rat brain lysate

Lysates/proteins at 15 µg per lane.

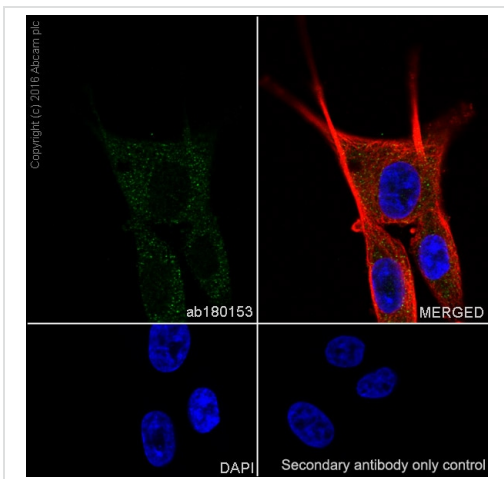
**Secondary**

**All lanes :** Goat Anti-Rabbit IgG H&L (HRP) (**ab97051**) at 1/20000 dilution

**Predicted band size:** 191 kDa

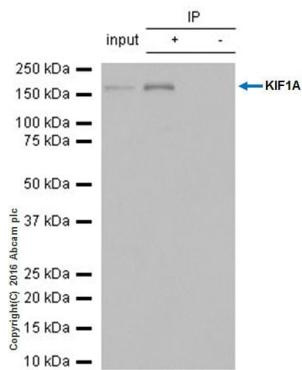
**Observed band size:** 191 kDa

Blocking and diluting buffer and concentration: 5% NFDM /TBST.



Immunocytochemistry/ Immunofluorescence - Anti-KIF1A antibody [EPR11790(B)] (ab180153)

Immunocytochemistry/Immunofluorescence analysis of U-87 MG (Human glioblastoma-astrocytoma epithelial cell line) cells labeling KIF1A with purified ab180153 at 1/100 dilution (9.2µg/ml). Cells were fixed in 4% paraformaldehyde and permeabilised with 0.1% tritonX-100. Ab195889, anti-alpha Tubulin antibody [DM1A] - Microtubule Marker (Alexa Fluor® 594) was used as the secondary antibody at 1/200 dilution (2.5 µg/ml). DAPI was used as the nuclear counter stain.



Immunoprecipitation - Anti-KIF1A antibody  
[EPR11790(B)] (ab180153)

ab180153 (purified) at 1/50 dilution  
(2ug) immunoprecipitating KIF1A in SH-SY5Y (Human neuroblastoma cell line from bone marrow) whole cell lysate.

**Lane 1 (input):** SH-SY5Y (Human neuroblastoma cell line from bone marrow) whole cell lysate 10ug

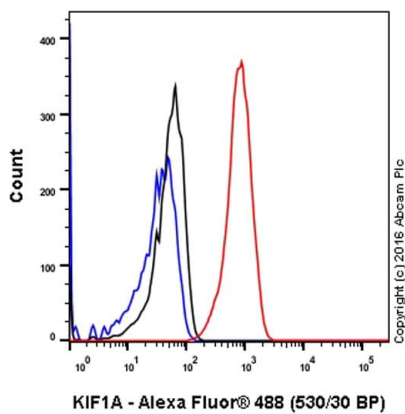
**Lane 2 (+):** ab180153 + SH-SY5Y (Human neuroblastoma cell line from bone marrow) whole cell lysate 10ug

**Lane 3 (-):** Rabbit monoclonal IgG (**ab172730**) instead of ab180153 in SH-SY5Y (Human neuroblastoma cell line from bone marrow) whole cell lysate

For western blotting, **ab131366** VeriBlot for IP Detection Reagent (HRP) was used for detection (1/10000).

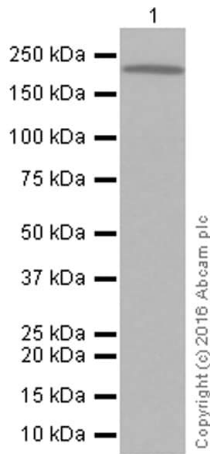
Blocking buffer and concentration: 5% NFDm/TBST.

Diluting buffer and concentration: 5% NFDm /TBST.



Flow Cytometry (Intracellular) - Anti-KIF1A antibody  
[EPR11790(B)] (ab180153)

Intracellular Flow Cytometry analysis of SH-SY5Y (Human neuroblastoma cell line from bone marrow) cells labeling KIF1A with purified ab180153 at 1/90 dilution (10 ug/ml). Cells were fixed with 4% paraformaldehyde. A goat anti-rabbit IgG (Alexa Fluor® 488) was used as the secondary antibody at 1/2000 dilution. Black - Isotype control, Rabbit monoclonal IgG. Blue - unlabelled control, cells without incubation with primary antibody and secondary antibody.



Western blot - Anti-KIF1A antibody [EPR11790(B)]  
(ab180153)

Anti-KIF1A antibody [EPR11790(B)] (ab180153) at 1/10000 dilution (purified) + HEK-293 (Human epithelial cell line from embryonic kidney) whole cell lysate at 15 µg

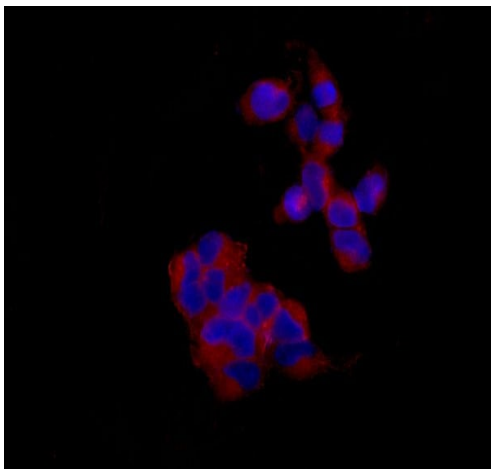
**Secondary**

Goat Anti-Rabbit IgG H&L (HRP) ([ab97051](#)) at 1/20000 dilution

**Predicted band size:** 191 kDa

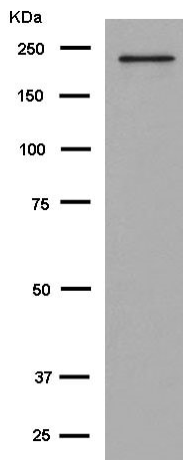
**Observed band size:** 191 kDa

Blocking and diluting buffer and concentration: 5% NFDm/TBST.



Immunocytochemistry/ Immunofluorescence - Anti-KIF1A antibody [EPR11790(B)] (ab180153)

Immunofluorescent analysis of 4% paraformaldehyde-fixed 293 cells labeling KIF1A with unpurified ab180153 at 1/100 dilution, followed by Goat anti rabbit IgG (Dylight 555) at 1/250 dilution. Counter stained with Dapi.



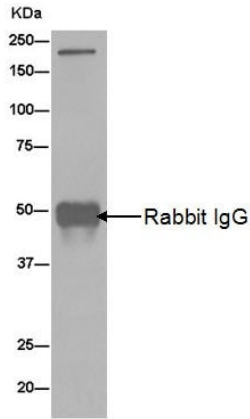
Western blot - Anti-KIF1A antibody [EPR11790(B)]  
(ab180153)

Anti-KIF1A antibody [EPR11790(B)] (ab180153) at 1/20000 dilution (unpurified) + 293 cell lysate at 10 µg

**Secondary**

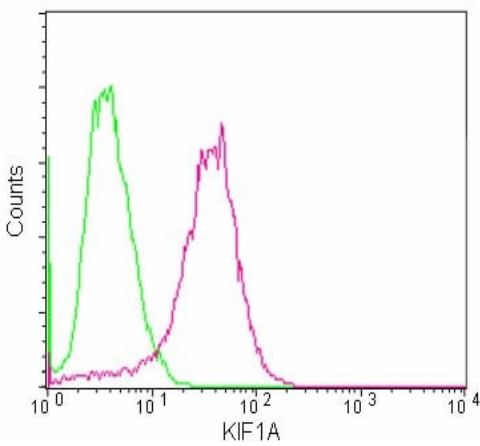
Goat Anti-Rabbit IgG, (H+L), Peroxidase conjugated at 1/1000 dilution

**Predicted band size:** 191 kDa



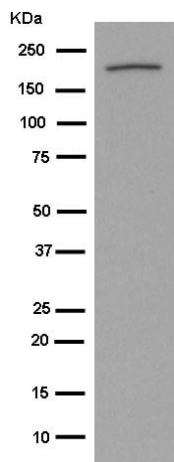
Immunoprecipitation - Anti-KIF1A antibody  
[EPR11790(B)] (ab180153)

Western blot analysis of 293 cell lysate immunoprecipitated using unpurified ab180153 at 1/30 dilution, followed by Goat Anti-Rabbit IgG, (H+L), Peroxidase conjugated secondary antibody at 1/1000 dilution.



Flow Cytometry (Intracellular) - Anti-KIF1A antibody  
[EPR11790(B)] (ab180153)

Intracellular flow cytometric analysis of 2% paraformaldehyde-fixed SH-SY5Y cells labeling KIF1A with unpurified ab180153 at 1/150 dilution (red), compared to a Rabbit IgG control (green), followed by Goat anti rabbit IgG (FITC) at 1/75 dilution.



Western blot - Anti-KIF1A antibody [EPR11790(B)]  
(ab180153)

Anti-KIF1A antibody [EPR11790(B)] (ab180153) at 1/10000 dilution (unpurified) + Human fetal brain lysate at 20 µg

### Secondary

Goat Anti-Rabbit IgG, (H+L), Peroxidase conjugated at 1/1000 dilution

**Predicted band size:** 191 kDa

### Why choose a recombinant antibody?



**Research with confidence**  
Consistent and reproducible results



**Long-term and scalable supply**  
Recombinant technology



**Success from the first experiment**  
Confirmed specificity



**Ethical standards compliant**  
Animal-free production

Anti-KIF1A antibody [EPR11790(B)] (ab180153)

**Please note:** All products are "FOR RESEARCH USE ONLY. NOT FOR USE IN DIAGNOSTIC PROCEDURES"

### Our Abpromise to you: Quality guaranteed and expert technical support

---

- Replacement or refund for products not performing as stated on the datasheet
- Valid for 12 months from date of delivery
- Response to your inquiry within 24 hours
- We provide support in Chinese, English, French, German, Japanese and Spanish
- Extensive multi-media technical resources to help you
- We investigate all quality concerns to ensure our products perform to the highest standards

If the product does not perform as described on this datasheet, we will offer a refund or replacement. For full details of the Abpromise, please visit <https://www.abcam.com/abpromise> or contact our technical team.

### Terms and conditions

---

- Guarantee only valid for products bought direct from Abcam or one of our authorized distributors